



**Ysgol Nebo**

**STATUTORY CONSULTATION DOCUMENT**

**December 2025**

# Contents

Foreword .....	4
1. Introduction .....	5
1.1 The Proposal which is the subject of this Statutory Consultation.....	5
2. The Consultation .....	5
3. Background Details.....	9
3.1. How the Proposal was Developed.....	9
3.2 Presumption against the closure of rural schools .....	9
3.3 Ysgol Nebo School Review Panel .....	10
4. Existing Arrangements in the Nebo Area .....	11
4.1 Ysgol Nebo.....	11
4.2 Ysgol Llanllyfni .....	12
4.3 Ysgol Bro Llifon.....	12
4.4 Ysgol Brynaerau .....	12
4.5 Ysgol Bro Lleu .....	12
4.6 Ysgol Talysarn .....	12
4.7 Ysgol Baladeulyn .....	13
4.8 School Categories .....	13
4.9 Summary of School Statistics:.....	14
5. The Case for Change .....	16
5.1. The Current Situation .....	16
5.2. Learner Numbers and Projections .....	16
5.3. Strengths and Weaknesses of the Current Situation.....	18
6. Options Appraisal .....	19
6.1 Comparison of Options.....	20
6.2 Impact Assessments - Presumption Against the Closure of Rural Schools.....	31
6.3 The conclusions of the options appraisal .....	34
7. The Proposal .....	41
7.1 Reason for the Proposal.....	41
7.2 Quality of Education .....	42
7.3 Class Sizes and Appropriate Age Ranges .....	45
7.4 Learner Numbers .....	46
7.5 Management and Leadership .....	47
7.6 Nursery and Early Years Provision.....	48
7.7 Financial Resources .....	49
7.8 Learning Environment .....	50
7.9 The Community .....	51

7.10 The Welsh Language .....	52
7.11 Geographical Factors.....	55
7.12 Impact on equality .....	57
7.13 The Well-being of Future Generations Act.....	58
7.14 Information about Additional Learning Needs .....	58
7.15 Future use of the site .....	58
7.16 Potential Risks .....	59
7.17 Expected Advantages and Disadvantages of the Proposal .....	59
8. A Summary of the Proposal .....	60
9. An Explanation of the Statutory Process and Consultation Details .....	60
10. Proposed Outline Timetable .....	62
 Appendix 1 – Response Form.....	 63

# Foreword

At a Cyngor Gwynedd Cabinet meeting held on 14 October 2025, the Cabinet agreed to undertake a period of statutory consultation on the proposal to close Ysgol Nebo on 31 December 2026 and to provide education for learners at Ysgol Llanllyfni, from 1 January 2027, in accordance with the requirements of Section 48 of the School Standards and Organisation Act 2013.

The statutory consultation will be held between **5 December 2025 and 23 January 2026**, based on the proposal to close Ysgol Nebo on 31 December 2026, and offer a place for learners at Ysgol Llanllyfni from 1 January 2027, in accordance with the requirements of Section 48 of the School Standards and Organisation Act 2013.

Cyngor Gwynedd invites you to put forward your views for consideration before a decision is made. At the end of the consultation period, a report will be submitted to the Cyngor Gwynedd Cabinet.

A copy of this document, and other background papers, are available on Cyngor Gwynedd's website [www.gwynedd.llyw.cymru/YsgolNeboConsultation](http://www.gwynedd.llyw.cymru/YsgolNeboConsultation) and hard copies of all the documentation will also be available on request from the Modernising Education Office by emailing [modernisingeducation@gwynedd.llyw.cymru](mailto:modernisingeducation@gwynedd.llyw.cymru) or telephoning **01286 679247**

**PLEASE NOTE** - any comments on the statutory consultation document should be sent to the Modernising Education Office by **13:00 on Friday, 23 January 2026**. The relevant contact details are to be found at the end of this statutory consultation document.

We look forward to receiving your response.

Yours sincerely,

Gwern ap Rhisiart  
**Head of Education**

# 1. Introduction

Cyngor Gwynedd is considering the closure of Ysgol Nebo as a result of low number of learners attending the school. In September 2025, 11 learners aged Reception - Year 6, and 1 Nursery aged learner were registered at the school. Ysgol Llanllyfni has been named as the 'alternative school', and it is proposed to provide a place for the learners here.

Cyngor Gwynedd has considered several options for primary education in the Ysgol Nebo catchment area in order to ensure a sustainable provision for the future, responding specifically to the low number of learners. This document outlines the consultation process, the factors considered to be relevant by the Council and the decision-making process.

## 1.1 The Proposal which is the subject of this Statutory Consultation is:

Close Ysgol Nebo on 31 December 2026 and offer the learners a place at Ysgol Llanllyfni from 1 January 2027 onwards.

# 2. The Consultation

The consultation will be held between **5 December 2025 and 23 January 2026**.

**This consultation only relates to Ysgol Nebo and Ysgol Llanllyfni and therefore responses to this consultation should only refer to the proposal as described in paragraph 1.1 above.**

The consultation document will be distributed to the following consultees in accordance with the Welsh Government's School Organisation Code:

The requirements of the School Organisation Code 011/2018	It will be distributed to...
The maintaining or proposed maintaining authority for any school likely to be affected by the proposals;	Cyngor Gwynedd is proposing the proposal
Any other local authority (including those in England, where appropriate) likely to be affected - including in the case of dedicated SEN provision any authority placing or likely to place pupils with SEN in it;	Powys, Denbighshire, Conwy and Anglesey Councils
The Church in Wales and Roman Catholic Diocesan Authority for the area in which any school likely to be affected is located;	-

Any other appropriate religious body for any school likely to be affected by the proposals;	-
The governing body of any school which is the subject of the proposals;	The Governing Body of Ysgol Nebo The Governing Body of Ysgol Llanllyfni
The governing body of other schools which the proposer consider are likely to be affected by the proposals;	The Governing Body of Ysgol Bro Lleu The Governing Body of Ysgol Talysarn The Governing Body of Ysgol Brynaerau The Governing Body of Ysgol Bro Llifon The Governing Body of Ysgol Baladeulyn
Welsh Ministers;	Welsh Ministers;
Constituency and Regional Assembly Members (AMs) and Members of Parliament (MPs) representing the area served by/intended to be served by any school which is the subject of the proposals;	<u>Member of the Senedd – Arfon Constituency</u> Sian Gwenllian MP  <u>Regional Members of Parliament – North Wales</u> Llyr Gruffydd MP Mark Isherwood MP Sam Rowlands MP Carolyn Thomas MP  <u>Constituency Member of Senedd Dwyfor-Meirionnydd</u> Mabon ap Gwynfor MP  <u>Regional Members of Parliament – Mid and West Wales</u> Cefin Campbell MP Jane Dodds MP Joyce Watson MP Eluned Morgan MP
Estyn;	Owen Evans – Chief Inspector of Education and Training in Wales
Teaching and staff trade unions representing teachers and other staff at any school which is the subject of the proposals;	NASUWT; NEU; NAHT; UCAC; ASCL; GMB; UNISON, UNITE; Representatives
The relevant Regional Education Consortium;	Cyngor Gwynedd, Education Department
The Police and Crime Commissioner for the area served by/intended to be served by any school which is the subject of the proposals;	Andy Dunbobbin – North Wales Police Commissioner
Any community or town council for the area served by/ intended to be served by any school which is the subject of the proposals;	Llanllyfni Community Council

In the case of proposals affecting nursery provision any independent or voluntary providers who may be affected including Mudiad Meithrin;	Cylch Meithrin Llanllyfni
In the case of proposals affecting nursery provision, the Children and Young People's Partnership and/or the Early Years Development and Childcare Partnerships where present;	Gwynedd Family Information Service Mudiad Meithrin – Early Years Specialists
In the case of proposals affecting SEN provision, any relevant health or third sector bodies with an interest;	Betsi Cadwaladr University Health Board Representative
In the case of proposals affecting secondary provision, any further education institutions serving the area of the school;	Ysgol Dyffryn Nantlle
In the case of proposals affecting Welsh language provision, the Welsh Language Commissioner.	Welsh Language Commissioner
Other	Local Elected Member of the area in question Mantell Gwynedd

This consultation document will be published on Cyngor Gwynedd's website [www.gwynedd.llyw.cymru/modernisingeducation](http://www.gwynedd.llyw.cymru/modernisingeducation) and hard copies will be available on request from the Modernising Education Office.

During the consultation period, Cyngor Gwynedd officers will hold "drop-in sessions" to provide Governors, staff, and parents the opportunity to ask questions and further discuss the consultation.

As well as submitting comments, consultees can suggest other options by completing the response form.

The comments received during the statutory consultation period will be considered by the Cabinet, before a decision is made on the next steps. Cyngor Gwynedd's Cabinet will decide whether or not to proceed with the proposal, and whether or not a Statutory Notice should be published.

In accordance with the Schools Organisation Code 011/2018, and specifically the 'Presumption Against the Closure of Rural Schools', consultees will be able to make observations relating to the other options noted as well as the main proposal (see section 6). Consultees will also be able to suggest alternative options which would address the reasons for the proposal to close the school (i.e. the key challenges Ysgol Nebo faces which the Council is seeking to address).

As a part of the consultation process, a background information pack will be available at Ysgol Nebo, Ysgol Llanllyfni, Siop Gwynedd Caernarfon and the Cyngor Gwynedd's website, [www.gwynedd.llyw.cymru/modernisingeducation](http://www.gwynedd.llyw.cymru/modernisingeducation). The pack includes:

- The School Organisation Code 011/2018
- Schools Standards and Organisation (Wales) Act 2013.
- Excellent Primary Education for the Children of Gwynedd
- Statistics Pack (2025-26)
- Language Impact Assessment Report

- Report on the Assessment of the probable impact on the community
- Assessment of the impact on the people of Gwynedd
- Report on the Assessment of the probable impact on transport arrangements
- A Report on the Assessment of the probable Impact on the Quality and Standards of Education
- Well-being Assessment Report
- Local meetings
- Cabinet Report and Decision Notice February 2025
- Cabinet Report and Decision Notice October 2025

If you wish to receive this document in a different format, or if you have other questions about the proposal, contact the Modernising Education Office on 01286 679247.

## Consultation with Children and Young People

Arrangements will also be made to obtain the views of the children and young people who attend the schools. Designated sessions will be held with a group of learners from the two schools - exact dates to be confirmed. The consultation document for children and young people can be seen on Cyngor Gwynedd's website [www.gwynedd.llyw.cymru/YsgolNeboConsultation](http://www.gwynedd.llyw.cymru/YsgolNeboConsultation), along with a response form/questionnaire. This is to ensure that the children and young people who have not attended a session at their school will also be able to respond to the consultation.

## How to Respond to the Consultation?

You can respond to this consultation by completing the online [response form](http://www.gwynedd.llyw.cymru/YsgolNeboResponseForm) [www.gwynedd.llyw.cymru/YsgolNeboResponseForm](http://www.gwynedd.llyw.cymru/YsgolNeboResponseForm)

Or by completing the response form attached to the consultation document and returning it to:

**E-mail:** [modernisingeducation@gwynedd.llyw.cymru](mailto:modernisingeducation@gwynedd.llyw.cymru)

**Post:** Modernising Education Office  
Gwynedd Council  
Shirehall Street  
Caernarfon  
Gwynedd  
LL55 1SH

**Note** - All responses, whether by post or e-mail, must reach the Council's Headquarters by **13:00 on Friday, 23 January 2026.**



## 3. Background Details

### 3.1. How the Proposal was Developed

In January 2025, the number of learners attending Ysgol Nebo had reduced to 10. At its meeting on 11 February 2025, the Cabinet approved the decision sought, namely to *"begin formal discussions with the Governing Body and relevant stakeholders of Ysgol Nebo and discuss possible options regarding the future of the school in response to the low numbers of learners and concerns about the sustainability of the school."*

By September 2025, there had been a slight increase in the number of learners attending the school. However, the numbers remained low with 11 full-time learners (Reception - Year 6), and 1 part-time learner (Nursery), and projections show that the numbers will remain low with 10 full-time learners (Reception - Year 6) and 2 part-time learners (Nursery) projected to be in the school by September 2028.

Three local meetings were held between March and July 2025 to discuss a range of options in an attempt to resolve the key challenges facing the school.

The proposal was developed in line with achieving the aims of existing strategies. The "Excellent Primary Education for Children in Gwynedd" Strategy was submitted to a meeting of the Full Council on 2 April 2009. The strategy was unanimously accepted by the Council with the vision being to:

*"Provide education of the best possible quality that will provide the County's children with the experiences, skills and confidence to develop into bilingual, successful and well-rounded citizens."*

The proposal was developed using the factors in the Excellent Primary Education for Children in Gwynedd Strategy, and these were measured against the options. This assessment can be viewed in this document.

In addition, the following strategies and objectives were considered as the proposal was developed:

- Gwynedd Welsh Language Strategy
- Gwynedd Plan 2023-28

At its meeting on 14 October 2025, Cyngor Gwynedd's Cabinet decided to begin a period of statutory consultation in accordance with the requirements of section 48 of the School Standards and Organisation (Wales) Act 2013 on the proposal to close Ysgol Nebo on 31 December 2026 and offer a place for learners at Ysgol Llanllyfni, from 1 January 2027 onwards.

### 3.2 Presumption against the closure of rural schools

The School Organisation Code (The Code) includes a specific procedure in relation to rural schools, establishing a procedural presumption against closure.

It is stated in the Code

*"This does not mean that a rural school will never close but the case for closure must be strong and all viable alternatives to closure must have been conscientiously considered by the proposer, including federation."*

Ysgol Nebo is designated as a 'rural school' for the purpose of the Code. As a result, specific consideration was given to the additional procedural requirements in relation to drawing up a proposal for rural schools.

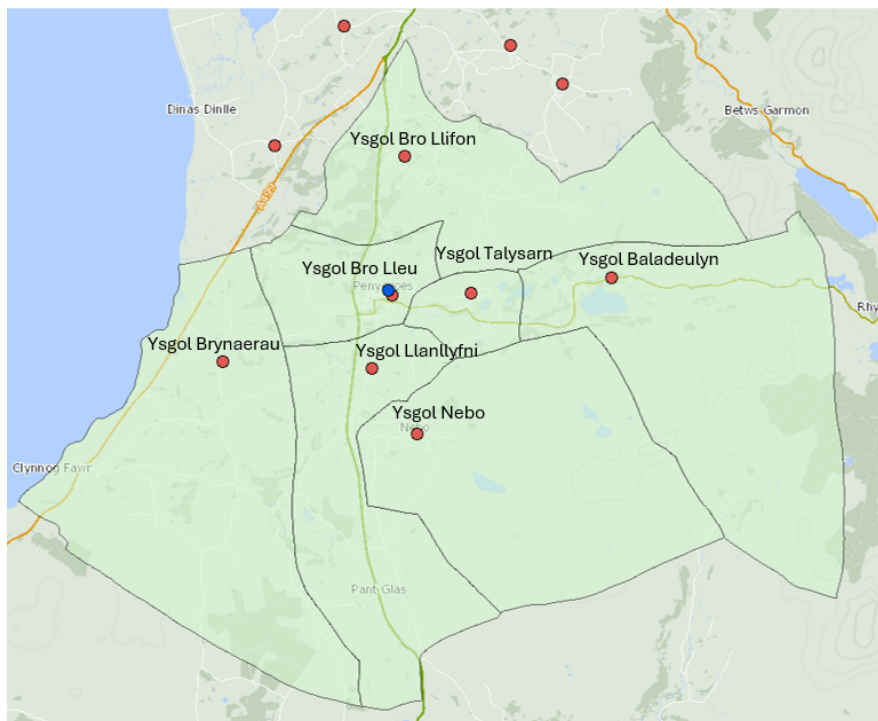
### 3.3 Ysgol Nebo School Review Panel

The Ysgol Nebo School Review Panel (SRP) was established during March 2025 and a series of meetings was held between March and July 2025, with the last of these held on 14 July 2025. The SRP included the school's headteacher, governors, the Local Member, parents and staff.

During the meetings, a number of options were considered for primary education in the Ysgol Nebo catchment area in order to ensure sustainable provision for the future, and to specifically respond to the low number of learners, and the small class sizes.

## 4. Existing Arrangements in the Nebo Area

Ysgol Nebo is located in the secondary catchment area of Ysgol Dyffryn Nantlle. There are 6 other nearby schools whose catchment areas are located within the secondary catchment area of Ysgol Dyffryn Nantlle, namely Ysgol Llanllyfni, Ysgol Bro Llifon, Ysgol Brynaerau, Ysgol Bro Lleu, Ysgol Talysarn and Ysgol Baladeulyn.



**The location of primary schools in the Nebo area  
(Ysgol Dyffryn Nantlle Secondary Catchment area)**

### The schools which are the subject of this consultation:

#### 4.1 Ysgol Nebo

- Ysgol Nebo is located in the village of Nebo
- Learners are admitted to the school part-time in the September following their third birthday, and as full-time learners in the September following their fourth birthday. In September 2025, 11 full-time learners (Reception – Year 6) and 1 part time learner (Nursery) was registered at the school. 17% of the learners live in the Ysgol Nebo catchment area.
- There are two classes in the school
- Ysgol Nebo is located in the Clynog ward, and the school's catchment area includes part of the Clynog ward and part of the Llanllyfni ward. According to the 2021 census, 67.8% of Clynog ward residents and 73.2% of Llanllyfni ward residents are Welsh speakers.
- 50% of the learners speak fluent Welsh at home (PLASC January 2025).
- Ysgol Nebo receives an additional amount to the core allocation via the minimum staffing policy (which guarantees at least a headteacher and a teacher in each school, and a headteacher and an assistant in schools with less than 15 full-time learners). The total additional amount during the 2025-26 financial year (based on September 2024 numbers) was £70,694.
- The average cost per learner at Ysgol Nebo is £25,867 (2025-26) compared to the county average of £5,780 for the same period.

## 4.2 Ysgol Llanllyfni

- Ysgol Llanllyfni is located in the village of Llanllyfni.
- Learners are admitted to the school part-time in the September following their third birthday, and as full-time learners in the September following their fourth birthday. In September 2025, 59 full-time learners (Reception – Year 6) and 13 part time learners (Nursery) were registered at the school.
- According to 2025 data, 74% of Ysgol Llanllyfni learners live within the school's catchment area, whilst 26% of the school's learners live within another school's catchment area, with 6% of Ysgol Llanllyfni's learners living within the catchment area of Ysgol Nebo.
- There are four classes in the school
- Ysgol Llanllyfni is located in the Llanllyfni ward, and the school's catchment area includes part of Clynnog ward and part of Llanllyfni ward. According to the 2021 census, 67.8% of Clynnog ward residents and 73.2% of Llanllyfni ward residents are Welsh speakers.
- 80% of the learners speak fluent Welsh at home (PLASC January 2025).

### Other nearby Primary Schools:

Although they are not included in the proposal, information is provided about the schools below, as it could be considered reasonable for the learners to consider transferring there.

## 4.3 Ysgol Bro Llifon

- Ysgol Bro Llifon is located in the village of Groeslon, approximately five miles from Caernarfon.
- There are 134 (+15 nursery) learners on the register (September 2025).
- 83% of the learners at the school speak fluent Welsh at home (PLASC 2025).

## 4.4 Ysgol Brynaerau

- Ysgol Brynaerau is located approximately half a mile from the village of Pontllyfni, which is on the main road between Caernarfon and Pwllheli
- There are 53 (+6 nursery) learners on the register (September 2025).
- 63% of the learners at the school speak fluent Welsh at home (PLASC 2025).

## 4.5 Ysgol Bro Lleu

- Ysgol Bro Lleu is located in Penygroes, approximately eight miles from the town of Caernarfon in Gwynedd.
- There are 167 (+25 nursery) learners on the register (September 2025).
- 73% of the learners at the school speak fluent Welsh at home (PLASC 2025).

## 4.6 Ysgol Talysarn

- Ysgol Talysarn is located in the rural village of Talysarn, approximately nine miles from Caernarfon.
- There are 84 (+17 nursery) learners on the register (September 2025).
- 37% of the learners at the school speak fluent Welsh at home (PLASC 2025).

## 4.7 Ysgol Baladeulyn

- Ysgol Baladeulyn is located in the village of Nantlle, approximately three miles from Penygroes.
- There are 6 (+2 nursery) learners on the register (September 2025).
- 55% of the learners at the school speak fluent Welsh at home (PLASC 2025).

## 4.8 School Categories

Gwynedd schools are defined as Community, Voluntary Assisted (VA) or Voluntary Controlled (VC). Also, Voluntary Assisted or Voluntary Controlled Schools can be designated with a religious character i.e. as a Church in Wales School.

Ysgol Nebo and Ysgol Llanllyfni are both 'Community' schools.

## 4.9 Summary of School Statistics:

		Nebo		Llanllyfni		Baladeulyn		Bro Llifon		Brynaerau		Bro Lleu		Talysarn	
Location of the School		Caernarfon LL54 6EE		Caernarfon LL54 6SH		Caernarfon LL54 6BT		Caernarfon LL54 7DT		Caernarfon LL54 5EU		Caernarfon LL54 6RL		Caernarfon LL54 6HR	
Age Range		3-11		3-11		3-11		3-11		3-11		3-11		3-11	
School's Category Community School [CS] / Voluntary Aided [VA] / Voluntary Controlled [VC]		Community School		Community School		Community School		Community School		Community School		Community School		Community School	
Language Medium Category		Welsh Medium, Category 3		Welsh Medium, Category 3		Welsh Medium, Category 3		Welsh Medium, Category 3		Welsh Medium, Category 3		Welsh Medium, Category 3		Welsh Medium, Category 3	
Number of Learners on the register- September 2025	Nursery	1		13		2		15		6		25		17	
	Reception- Yr.6	11		59		6		134		53		167		84	
	Total	12		72		8		149		59		192		101	
Number of learners on the register in the last 5 years		Nursery	Reception – Yr.6	Nursery	Reception – Yr.6	Nursery	Reception – Yr.6	Nursery	Reception – Yr.6	Nursery	Reception – Yr.6	Nursery	Reception – Yr.6	Nursery	Reception – Yr.6
	September 2020	0	15	7	67	1	21	20	142	6	55	22	174	15	89
	September 2021	2	15	6	64	0	17	14	143	7	54	21	178	16	87
	September 2022	0	11	10	62	2	18	21	141	9	53	24	167	14	96
	September 2023	3	12	13	57	2	15	16	133	8	56	25	175	10	88
	September 2024	0	8	11	65	0	13	22	126	4	57	21	171	10	86
Capacity	Nursery	7		14		7		24		10		27		13	
	Reception- Yr.6	51		103		55		172		71		180		91	
	Total	58		117		62		196		81		207		104	

<b>Surplus Places (R-Yr.6) September 2025</b>		40		44		49		38		18		13		7	
<b>Learner Number Projections</b>		<b>Nursery</b>	<b>Reception – Yr.6</b>	<b>Nursery</b>	<b>Reception – Yr.6</b>	<b>Nursery</b>	<b>Reception – Yr.6</b>	<b>Nursery</b>	<b>Reception – Yr.6</b>	<b>Nursery</b>	<b>Reception – Yr.6</b>	<b>Nursery</b>	<b>Reception – Yr.6</b>	<b>Nursery</b>	<b>Reception – Yr.6</b>
	<b>September 2026</b>	2	12	12	63	1	8	9	126	6	48	24	169	10	90
	<b>September 2027</b>	2	11	12	66	1	8	6	115	6	45	24	173	11	89
	<b>September 2028</b>	2	10	11	72	1	7	6	102	6	48	24	170	11	85
	<b>September 2029</b>	2	11	12	78	1	8	7	94	6	45	24	170	11	81
	<b>September 2030</b>	2	12	12	82	1	8	6	85	6	42	24	166	11	83
<b>School Performance Data (Estyn)</b>		5x Good (2017)		3x Good (2017)		5x Good (2017)		5x Good (2018)		5x Excellent (2019)		<i>New Inspection Framework (2023)</i>		1x Excellent 2x Good (2017)	
<b>Category Condition of buildings (Council's criteria) 2024-25</b>		B		B		B		A		B		B		B	
<b>Finance Allocation 2025- 26</b>		£206,936		£402,831		£194,391		£729,967		£372,811		£962,593		£521,659	
<b>Cost per learner 2025-26</b>		£25,867		£5,768		£14,953		£5,380		£6,345		£5,341		£5,771	

## 5. The Case for Change

### 5.1. The Current Situation

The school has been prioritised for a review of the educational provision as it faces a number of challenges. The number of learners at the school has declined over the past few years, leading to a critical situation with 11 learners Reception - Year 6 and 1 Nursery learner on the register in the September 2025 census.

As a result of the current low numbers, the school is in a vulnerable position and faces many increasing challenges, including:

- **Low numbers of learners** - In January 2025, 10 Reception - Year 6 learners and 0 nursery learners attended Ysgol Nebo. Although the numbers have increased slightly since then, the numbers remain low with 11 Reception - Year 6 learners and 1 nursery learner on the register in September 2025.
- **A high percentage of surplus places** – With 11 Reception - Year 6 learners on the school's register, and a capacity of 51, there are 40 surplus places the school, which is equivalent to 78% of the school's capacity. The school has capacity for 7 learners in the Nursery class as well, so with 1 nursery learner on the roll, there are also 6 surplus places in the nursery. Therefore, by including the Nursery – Year 6 capacity and numbers, Ysgol Nebo has 46 (79%) surplus places.
- **Small class sizes and a broad age range** - There are 2 classes at Ysgol Nebo (September 2025) with 5 learners (Reception – Year 3) and 1 Nursery learner in one class and 6 learners (Year 4 - Year 6) in the second class. As a result, there is an age range of up to 5 years in one class and up to 3 years in the second class.
- **Number projections** – September 2025 projections suggest that the number of learners at Ysgol Nebo will remain low over the next three years, with a projection of 10 Reception - Year 6 learners and 2 Nursery learners on the register by September 2028.
- **Learners in the catchment area** – According to September 2025 census and Geographic Information Systems (GIS) data from November 2025, only 22% of Ysgol Nebo catchment area learners choose to attend the school. 78% of learners in the catchment area choose to attend schools outside the catchment area.
- **Ysgol Nebo receives an additional amount to the core financial allocation** – Ysgol Nebo receives an additional amount to the usual allocation via the minimum staffing policy (which guarantees at least a headteacher and a teacher in each school, and a headteacher and an assistant in schools with less than 15 full-time learners). The total additional amount during the 2025-26 financial year (based on September 2024 numbers) was £70,694.
- **Average cost per learner** – The average cost per learner at Ysgol Nebo in 2025-26 is £25,867 compared to the county average for the same period of £5,780.

### 5.2. Learner Numbers and Projections

Learner numbers at Gwynedd schools have varied since 1975. However, in general, an approximate reduction of 27% was seen in the number of learners across the County. Consequently, resources are spent every year on the maintenance of buildings and ineffective systems, rather than on the education of children and young people.



The following table provides a summary of learner numbers in the area's schools between 1975 and 2025:

School	Number [Nursery – Yr.6 (aged 3-11)]											1975	1975
	1975	1980	1985	1990	1995	2000	2005	2010	2015	2020	2025	-	-
												+/-	% +/-
Nebo	34	20	29	24	24	17	27	31	26	15	12	-22	-65%
Llanllyfni	109	114	84	86	87	112	92	81	88	74	72	-37	-34%
Baladeulyn	27	30	29	31	46	38	34	25	33	22	8	-19	-70%
Bro Lleu	226	197	125	122	161	161	166	168	198	196	192	-34	-15%
Bronyfoel	26	29	26	30	26	34	33	36	-	-	-	-	-
Carmel	49	55	41	51	33	68	56	53	-	-	-	-	-
Groeslon	107	96	97	84	95	92	93	85	-	-	-	-	-
Bro Llifon	-	-	-	-	-	-	-	-	131	162	149	18*	14%*
Brynaerau	66	70	38	47	41	41	73	73	66	61	59	-7	-11%
Talysarn	138	117	101	94	90	84	71	77	93	104	101	-37	-27%
<b>Total</b>	<b>782</b>	<b>728</b>	<b>570</b>	<b>569</b>	<b>603</b>	<b>647</b>	<b>645</b>	<b>629</b>	<b>635</b>	<b>634</b>	<b>593</b>	<b>189</b>	<b>-24%</b>

\*2015-2025

Source: September 2025 Data

The above table shows that the numbers of primary learners have decreased in the Dyffryn Nantlle Secondary catchment area since 1975. There has been a reduction of -65% in the numbers of learners at Ysgol Nebo between 1975 and 2025.

The table below shows the current population of learners in the area.

School	Numbers (September 2025)	
	Full Time (Reception – Year 6)	Part-time (Nursery)
Nebo	11	1
Llanllyfni	59	13
Baladeulyn	6	2
Bro Lleu	167	25
Bro Llifon	134	15
Brynaerau	53	6
Talysarn	84	17

Source: September 2025 Census

The table below shows the area's projections for the next five years (Reception-Year 6):

	Nebo	Llanllyfni	Baladeulyn	Bro Llifon	Brynaerau	Bro Lleu	Talysarn	Total
September 2026	12	63	8	126	48	169	90	516
September 2027	11	66	8	115	45	173	89	507
September 2028	10	72	7	102	48	170	85	494
September 2029	11	78	8	94	45	170	81	487
September 2030	12	82	8	85	42	166	83	478

Source: September 2025 Census

### 5.3. Strengths and Weaknesses of the Current Situation

Strengths	Weaknesses
Keeping a school presence and a community resource in the village of Nebo	Small classes with a broad age range of up to 5 years.
Learners receiving Category 3 Welsh-medium education.	Low numbers and a lack of daily opportunities for learners to socialise and collaborate with peers
School within a reasonable distance of the homes of the catchment area's learners	High cost per learner
School staff positions continue (dependent on the allocation)	Projected numbers show that numbers will remain low with 10 Reception – Year 6 learners and 2 Nursery learners on the register by September 2028.
	High percentage of surplus places
	Temporary arrangements are in place for the school's leadership, with uncertainty regarding the leadership's permanent arrangements for the future.
	High percentage of the catchment area's learners attend schools outside the catchment area
	Uncertainty continues regarding the long-term sustainability of the school
	Ysgol Nebo continues to receive an additional amount to the core financial allocation through the minimum staffing policy.

On the basis this information, the Education Department is of the opinion that the weaknesses noted outweigh the strengths, and therefore continuing with the current education provision in Ysgol Nebo is not viable for the future. The main reasons why the Education Department is of the opinion that it is impractical to keep the school open are:

- Very small classes and a broad age range within classes
- Low numbers and a lack of daily opportunities for learners to socialise and collaborate with peers
- Projected numbers show that numbers will remain low with 10 full time learners (Reception – Year 6) and 2 part-time learners (Nursery) on the register by September 2028.

## 6. Options Appraisal

With input from the Ysgol Nebo School Review Panel members during the local meetings, a long list of options was drawn up for consideration regarding the future of the school. These included options submitted by the stakeholders of Ysgol Nebo. These options were:

<b>No change (‘Status Quo’)</b>	No change – continue with the current situation
<b>Option 2</b>	Federation with a nearby school
<b>Option 3</b>	Federation with a nearby School and adding a specialist unit for children with additional learning needs at Ysgol Nebo
<b>Option 4</b>	Close Ysgol Nebo and offer the learners a place in a nearby school (Ysgol Llanllyfni)
<b>Option 5</b>	Ysgol Nebo to develop into a specialist location for some individual subjects (unique opportunities to carry out fieldwork)
<b>Option 6</b>	Ysgol Nebo to offer a specialist unit for supporting children with additional learning needs
<b>Option 7</b>	Ysgol Nebo to offer a Language Unit for the Dyffryn Nantlle catchment area
<b>Option 8</b>	Establishing a School on more than one site (multi-site School)

A wide range of options were identified during the local meetings, and consideration has also been given to what the School Organisation Code 011/2018 notes as examples of possible options that could be worth considering when drawing up the proposal for a rural school. The following examples were considered in addition to the options set out in the table above. Those options are seen below with comments added to them:

- i. Clustering, collaboration with other schools- the option of federating with a nearby school has been included in the options appraisal.
- ii. Using the school as a community centre to maintain and support a range of community services – following consideration of the option to use the school as a community centre, it was concluded that this option would not offer a sustainable solution for the school, as it would not respond to the challenges facing the school (as stated in section 5.1). If this option were to be realised, it is anticipated that the challenges identified in section 5.1 of the consultation document, e.g. low numbers of learners, small class sizes would continue, and as a result the financial challenges facing the school would continue.
- iii. Co-location of local services within the school to offset maintenance costs - this option is further considered in the options appraisal through the following options: (i) Ysgol Nebo to offer a specialist unit for supporting children with additional learning needs (ii) Ysgol Nebo to offer a Language Unit for the Dyffryn Nantlle catchment area.
- iv. Consider establishing schools on more than one site in order to preserve buildings - this option, namely the establishment of a multi-site school, was added to the list of options to be considered following the third local meeting and is therefore considered in the options appraisal.

## 6.1 Comparison of Options

An options appraisal was completed to summarise the main strengths, weaknesses, opportunities and threats of the options under consideration. All options were appraised against the factors of the Excellent Primary Education for the Children of Gwynedd strategy, whilst also considering the School Organisation Code and other relevant considerations.

In accordance with the '*Excellent Primary Education for the Children of Gwynedd*' strategy, a number of factors were considered when appraising the options, specifically:

- i. Class sizes and age range
- ii. Learner Numbers and Surplus Places
- iii. Leadership and Staffing
- iv. The Community
- v. Financial Resources
- vi. The Welsh Language
- vii. Geographical Factors

A further comparison of all options against the factors of the Strategy can be seen in the table below, and a summary of the appraisal of individual options can be found in section 6.3 below.

Options Appraisal – Ysgol Nebo				
Key: <b>Blue - advantages</b> <b>Red - disadvantages</b> <b>Black – comments</b>				
Considerations	No change – continue with the current situation	Federate with a nearby school	Federalise with a nearby school adding a specialist unit for children with additional learning needs at Ysgol Nebo	Close Ysgol Nebo and offer the learners a place in a nearby school, Ysgol Llanllyfni.
<b>Learner numbers and surplus places</b>	<p>Low numbers continue at Ysgol Nebo (Numbers September 2025: 11 learners in Reception - Year 6 and 1 learner in Nursery).</p> <p>Number of surplus places remain high (40 surplus spaces (78%) Reception – Year 6; 46 surplus spaces (79%) Nursery – Year 6).</p> <p>The school's projections suggest that numbers will remain low over the next few years.</p>	<p>Low numbers continue at Ysgol Nebo (Numbers September 2025: 11 learners in Reception - Year 6 and 1 learner in Nursery).</p> <p>Number of surplus places remain high (40 surplus spaces (78%) Reception – Year 6; 46 surplus spaces (79%) Nursery – Year 6).</p> <p>The school's projections suggest that numbers will remain low over the next few years.</p> <p>There is no clear evidence that forming a federation would lead to an increase in numbers.</p>	<p>There is no clear evidence that a federation would lead to an increase in the number of learners at the school. It is predicted that low numbers would continue at Ysgol Nebo.</p> <p>As the learners of the ALN unit would continue to register as learners in their original school, it is not anticipated that the inclusion of an ALN unit on a school site would affect the numbers. As a result, it is predicted that numbers would remain low.</p> <p>(Numbers September 2025: 11 learners in Reception - Year 6 and 1 learner in Nursery).</p> <p>As the building would need to be adapted to provide a location for the specialist unit, the school's capacity would likely be reduced and therefore there would be fewer empty places</p> <p>The school's projections suggest that numbers will remain low over the next few years.</p>	<p>Ysgol Llanllyfni's numbers are stable with 59 Reception - Year 6 learners and 13 Nursery learners on the register (September 2025).</p> <p>A lower percentage of surplus places in the catchment area.</p>
<b>Class size and age range</b>	There are 2 classes at Ysgol Nebo (September 2025) with 5 learners	There are 2 classes at Ysgol Nebo (September 2025) with 5 learners	There are 2 classes at Ysgol Nebo (September 2025) with 5 learners	Learners to be taught in classes that are more suitable in size. Ysgol Llanllyfni learners are taught in classes of a more

	<p>(Reception – Year 3) and 1 Nursery learner in one class. There are 6 learners (Year 4 - Year 6) in the second class.</p> <p>According to projections no increase in numbers is foreseen.</p> <p>Ysgol Nebo's class sizes are therefore likely to remain small. There is an age range of up to 5 years in one class and 3 years in the second class.</p>	<p>(Reception – Year 3) and 1 Nursery learner in one class. There are 6 learners (Year 4 - Year 6) in the second class.</p> <p>According to projections no increase in numbers is foreseen.</p> <p>There is no clear evidence that forming a federation would lead to an increase in numbers. Ysgol Nebo's class sizes are therefore likely to remain small. There is an age range of up to 5 years in one class and 3 years in the second class.</p>	<p>(Reception – Year 3) and 1 Nursery learner in one class. There are 6 learners (Year 4 - Year 6) in the second class.</p> <p>According to projections no increase in numbers is foreseen.</p> <p>There is no clear evidence that locating an ALN unit on the school site, or forming a federation, would lead to an increase in numbers.</p> <p>Ysgol Nebo's class sizes are therefore likely to remain small. There is an age range of up to 5 years in one class and 3 years in the second class.</p>	<p>suitable size of between 18 and 22 learners in each class (September 2025).</p> <p>There are 3 classes with mixed ages at Ysgol Llanllyfni, together with a Nursery class.</p>
<b>Financial Resources</b>	<p>Ysgol Nebo has received a minimum staffing protection allocation amount of £70,694 in 2025-26 from the Authority to ensure appropriate staffing levels.</p> <p>Forecast numbers suggest that the need for a significant protection allocation will continue.</p> <p>The average cost per learner remains high (£25,867 per learner) - significantly higher than the county average of £5,780.</p>	<p>Ysgol Nebo has received a minimum staffing protection allocation amount of £70,694 in 2025-26 from the Authority to ensure appropriate staffing levels.</p> <p>Forecast numbers suggest that the need for a significant protection allocation will continue.</p> <p>The average cost per learner remains high (£25,867 per learner) - significantly higher than the county average of £5,780.</p> <p>An opportunity to make savings by sharing resources and employing staff across the federation when appointing in the future.</p>	<p>There would be transport costs associated with locating an ALN Unit at Ysgol Nebo.</p> <p>A significant capital cost is anticipated to adapt the building</p> <p>An additional financial source (revenue) would be needed to fund the ALN Unit.</p> <p>Ysgol Nebo has received a minimum staffing protection allocation amount of £70,694 in 2025-26 from the Authority to ensure appropriate staffing levels.</p> <p>The average cost per learner remains high (£25,867 per learner) -</p>	<p>Removing a school from the minimum staffing protection and no need for protection allocation in the alternative school</p> <p>Cost per learner will be closer to the county average.</p> <p>It is likely to lead to an increase in transport costs for the Authority.</p>

			<p>significantly higher than the county average of £5,780.</p> <p>Forecast numbers suggest that the need for a significant protection allocation will continue. It is not anticipated that locating an ALN unit on the school site or federation would respond to this financial challenge</p>	
<b>Leadership and Staffing</b>	<p>Current jobs at Ysgol Nebo to continue</p> <p>The school has received a smaller allocation for 2025/26 as the numbers in September 2024 were below 15 full-time learners. The allocation is to ensure the ability to employ a headteacher and an assistant.</p> <p>Due to the school's staffing structure, the Headteacher must teach the majority of the time.</p> <p>Projected numbers suggest that this will continue.</p>	<p>An opportunity to share good practices between the two schools and possibilities of making better use of resources.</p> <p>The school has received a smaller allocation for 2025/26 as the numbers in September 2024 were below 15 full-time learners. The allocation is to ensure the ability to employ a headteacher and an assistant.</p> <p>Due to the school's staffing structure, the Headteacher must teach the majority of the time.</p> <p>Projected numbers suggest that this will continue.</p>	<p>An opportunity to share good practices between the two schools and possibilities of making better use of resources.</p> <p>The school has received a smaller allocation for 2025/26 as the numbers in September 2024 were below 15 full-time learners. The allocation is to ensure the ability to employ a headteacher and an assistant.</p> <p>Due to the school's staffing structure, the Headteacher must teach the majority of the time.</p> <p>Projected numbers suggest that this will continue.</p> <p>Additional responsibility on the headteacher, as they would be responsible for the management of the unit's site.</p>	<p>The staffing structure of Ysgol Llanllyfni ensures teachers in all classes and allows more non-contact time for the Headteacher compared to Ysgol Nebo.</p> <p>It would lead to the dismissal of staff at Ysgol Nebo.</p>
<b>Geographical Factors</b>	<p>No change.</p> <p>The school is within a reasonable distance of the homes of learners in the catchment area.</p>	<p>No change.</p> <p>The school is within a reasonable distance of the homes of learners in the catchment area</p>	<p>No change for the learners of Ysgol Nebo</p> <p>The school is within a reasonable distance of the homes of learners in the catchment area</p>	<p>Transport will need to be offered to learners in Ysgol Nebo's catchment area.</p> <p>Some learners will travel further to school than they would at present.</p>

			Transport would be offered to the learners attending the ALN unit.	No learner in the Nebo catchment area will need to travel an unreasonable distance to school.
<b>The Community</b>	<p>Retain the school and its potential to be a community resource in the village of Nebo.</p> <p>Majority of learners from Ysgol Nebo's catchment area already attend out of-catchment schools.</p> <p>Uncertainty continues regarding the sustainability of education provision at Ysgol Nebo.</p>	<p>Possibility of community collaboration between the 2 schools.</p> <p>Retain the school and its potential to be a community resource in the village of Nebo.</p> <p>Majority of learners from Ysgol Nebo's catchment area already attend out of-catchment schools.</p> <p>Uncertainty continues regarding the sustainability of education provision at Ysgol Nebo</p>	<p>Retain the school and its potential to be a community resource in the village of Nebo.</p> <p>Majority of learners from Ysgol Nebo's catchment area already attend out of-catchment schools.</p> <p>Possibility of community collaboration between the 2 schools.</p> <p>Uncertainty continues regarding the sustainability of education provision at Ysgol Nebo</p>	<p>The village of Nebo would lose a school.</p> <p>A wider community where the children and parents can benefit from creating stronger links between 2 neighbouring communities.</p>
<b>The Welsh Language</b>	No change - Learners continue to receive Welsh medium education.	No change - Learners continue to receive Welsh medium education.	No change – both schools are Welsh medium schools.	No change – Ysgol Llanllyfni is a Welsh medium school.
<b>Additional comments offered by stakeholders during/ following SRP1 and SRP2</b>	<p><b>Strengths/Opportunities:</b></p> <ul style="list-style-type: none"> <li>• Staff to learner ratio working well at Ysgol Nebo</li> <li>• A robust inclusive approach at Ysgol Nebo</li> <li>• The health and well-being of Ysgol Nebo learners is central to everything</li> <li>• Small classes are an opportunity/strength</li> <li>• A wide age range is an opportunity to work with their peers (helping each other)</li> <li>• Community activities between the school and the community.</li> </ul>	<p><b>Strengths/Opportunities:</b></p> <ul style="list-style-type: none"> <li>• Staff to learner ratio working well at Ysgol Nebo</li> <li>• A robust inclusive approach at Ysgol Nebo</li> <li>• The health and well-being of Ysgol Nebo learners is central to everything</li> <li>• Community activities between the school and the community.</li> </ul>	<p><b>Strengths/Opportunities:</b></p> <ul style="list-style-type: none"> <li>• Staff to learner ratio working well at Ysgol Nebo</li> <li>• A robust inclusive approach at Ysgol Nebo</li> <li>• The health and well-being of Ysgol Nebo learners is central to everything</li> <li>• Additional grants to address improvements for learners with ALN</li> <li>• Community activities between the school and the community.</li> </ul>	<p><b>Weaknesses:</b></p> <ul style="list-style-type: none"> <li>• Learners to be taught in larger class sizes</li> <li>• Losing the robust inclusive approach that Ysgol Nebo offers to support health and well-being</li> <li>• Negative impact on the well-being of the current learners at Ysgol Nebo</li> </ul>



Considerations	Ysgol Nebo developing into a specialist location for some individual subjects (unique opportunities to carry out fieldwork)	Ysgol Nebo to offer a specialist unit for supporting children with additional learning needs	Ysgol Nebo to offer a Welsh Language Unit/Centre for the Dyffryn Nantlle catchment area	A multi-site school continuing with the site of Ysgol Nebo
<b>Learner numbers and surplus places</b>	<p>Low numbers continue at Ysgol Nebo (Numbers September 2025: 11 learners in Reception - Year 6 and 1 learner in Nursery).</p> <p>Number of surplus places remain high (40 surplus spaces (78%) Reception – Year 6; 46 surplus spaces (79%) Nursery – Year 6)</p> <p>The school's projections suggest that numbers will remain low over the next few years.</p>	<p>As the learners of the ALN unit would continue to register as learners in their original school, it is not anticipated that the inclusion of a specialist unit on a school site would affect the numbers. As a result, it is predicted that numbers would remain low.</p> <p>(Numbers September 2025: 11 learners in Reception - Year 6 and 1 learner in Nursery).</p> <p>As the building would need to be adapted to provide a location for the specialist unit, the school's capacity would likely be reduced and therefore there would be fewer surplus places.</p> <p>The school's projections suggest that numbers will remain low over the next few years.</p>	<p>As the building would need to be adapted to provide a location for the Welsh Language Unit/Centre, the school's capacity would likely be reduced and therefore there would be fewer surplus places.</p> <p>As the learners of the Welsh Language Unit/Centre would continue to register as learners in their original school, it is not anticipated that the inclusion of a language centre on a school site would affect the numbers. As a result, it is predicted that numbers would remain low.</p> <p>The school's projections suggest that numbers will remain low over the next few years.</p>	<p>With only 11 Reception - Year 6 learners, and 1 Nursery age learner attending Ysgol Nebo (September 2025), it is anticipated that the establishment of a multi-site school would not lead to an increase in numbers at the Ysgol Nebo site.</p> <p>As no increase in numbers is anticipated, it is anticipated that the large number of surplus places, space for 46 learners (79%), would continue.</p> <p>The school's projections suggest that numbers will remain low over the next few years.</p>
<b>Class size and age range</b>	<p>There are 2 classes at Ysgol Nebo (September 2025) with 5 learners (Reception – Year 3) and 1 Nursery learner in one class. There are 6 learners (Year 4 - Year 6) in the second class.</p> <p>According to projections no increase in numbers is foreseen.</p> <p>Ysgol Nebo's class sizes are therefore likely to remain small. There is an age</p>	<p>There is no clear evidence that locating an ALN unit on the school site, or forming a federation, would lead to an increase in numbers.</p> <p>Ysgol Nebo's class sizes are therefore likely to remain small. There is an age range of up to 5 years in one class and 3 years in the second class.</p>	<p>As the learners of the Welsh Language Unit/Centre would continue to register as learners in their original school, it is not anticipated that the inclusion of a language centre on a school site would affect the numbers. As a result, it is predicted that numbers would remain low.</p> <p>Ysgol Nebo's class sizes are therefore likely to remain small. There is an age</p>	<p>As it is not anticipated that this option would lead to an increase in numbers, it is anticipated that class sizes on the Ysgol Nebo site would remain small, with a broad age range.</p>

	range of up to 5 years in one class and 3 years in the second class.		range of up to 5 years in one class and 3 years in the second class.	
<b>Financial Resources</b>	<p>Ysgol Nebo has received a minimum staffing protection allocation amount of £70,694 in 2025-26 from the Authority to ensure appropriate staffing levels.</p> <p>Forecast numbers suggest that the need for a significant protection allocation will continue.</p> <p>The average cost per learner remains high (£25,867 per learner) - significantly higher than the county average of £5,780.</p>	<p>There would be transport costs associated with locating an ALN Unit at Ysgol Nebo.</p> <p>A significant capital cost is anticipated to adapt the building.</p> <p>An additional financial source (revenue) would be needed to fund the ALN Unit.</p> <p>Ysgol Nebo has received a minimum staffing protection allocation amount of £70,694 in 2025-26 from the Authority to ensure appropriate staffing levels.</p> <p>The average cost per learner remains high (£25,867 per learner) - significantly higher than the county average of £5,780.</p> <p>Forecast numbers suggest that the need for a significant protection allocation will continue. It is not anticipated that locating an ALN unit on the school site or federation would respond to this financial challenge.</p>	<p>There would be transport costs associated with locating a Language Unit at Ysgol Nebo.</p> <p>A significant capital cost is anticipated to adapt the building.</p> <p>An additional financial source (revenue) would be needed to fund the Language Unit.</p> <p>Ysgol Nebo has received a minimum staffing protection allocation amount of £70,694 in 2025-26 from the Authority to ensure appropriate staffing levels.</p> <p>The average cost per learner remains high (£25,867 per learner) - significantly higher than the county average of £5,780.</p> <p>Forecast numbers suggest that the need for a significant protection allocation will continue. It is not anticipated that locating a Language Unit on the school site would respond to this financial challenge.</p>	<p>Merging schools will mean establishing one multi-site school, with one allocation for all the sites. It is anticipated that the Nebo site would continue to receive an additional amount to the core allocation through the minimum staffing protection policy as the numbers of learners at the Nebo site would continue to be low.</p>

<b>Leadership and Staffing</b>	<p>Ysgol Nebo current positions continue.</p> <p>The school has received a smaller allocation for 2025/26 as the numbers in September 2024 were below 15 full-time learners. The allocation is to ensure the ability to employ a headteacher and an assistant.</p> <p>Due to the school's staffing structure, the Headteacher must teach most of the time.</p> <p>Projected numbers suggest that this will continue.</p>	<p>Ysgol Nebo current positions continue.</p> <p>The school has received a smaller allocation for 2025/26 as the numbers in September 2024 were below 15 full-time learners. The allocation is to ensure the ability to employ a headteacher and an assistant.</p> <p>Due to the school's staffing structure, the Headteacher must teach most of the time.</p> <p>Projected numbers suggest that this will continue.</p> <p>Additional responsibility for the headteacher, as they would be responsible for the management of the unit located on the site.</p>	<p>Ysgol Nebo current positions continue.</p> <p>The school has received a smaller allocation for 2025/26 as the numbers in September 2024 were below 15 full-time learners. The allocation is to ensure the ability to employ a headteacher and an assistant.</p> <p>Due to the school's staffing structure, the Headteacher must teach most of the time.</p> <p>Projected numbers suggest that this will continue.</p> <p>Additional responsibility for the headteacher, as they would be responsible for the management of the unit located on the site.</p>	<p>There would be a rationalisation of leadership with this option, but as there would be no effect on the numbers of learners at the sites, the current staffing structure of Ysgol Nebo would continue, with a site head (rather than a head) and an assistant.</p>
<b>Geographical Factors</b>	<p>No change.</p> <p>School within a reasonable distance of the homes of the learners in the catchment area.</p>	<p>No change for the learners of Ysgol Nebo.</p> <p>School within a reasonable distance of the homes of the learners in the catchment area.</p> <p>Transport would need to be arranged for children to attend the ALN Unit.</p>	<p>No change for the learners of Ysgol Nebo.</p> <p>School within a reasonable distance of the homes of the learners in the catchment area.</p> <p>Transport would need to be arranged for children to attend the Language Unit.</p>	<p>School site within a reasonable distance of the homes of the learners in the catchment area.</p> <p>Depending on the structure of the new school there is a possibility that it will be necessary to arrange transport between school sites.</p>
<b>The Community</b>	<p>Retain the school and its potential to be a community resource in the village of Nebo.</p> <p>Majority of learners from Ysgol Nebo's catchment area already attend out of-catchment schools.</p>	<p>Retain the school and its potential to be a community resource in the village of Nebo.</p> <p>Majority of learners from Ysgol Nebo's catchment area already attend out of-catchment schools.</p>	<p>Retain the school and its potential to be a community resource in the village of Nebo.</p> <p>Majority of learners from Ysgol Nebo's catchment area already attend out of-catchment schools.</p>	<p>Retain a school site and its potential to be a community resource in the village of Nebo.</p> <p>A wider community where the children and parents can benefit from creating</p>

	Uncertainty continues regarding the sustainability of education provision at Ysgol Nebo.	Uncertainty continues regarding the sustainability of education provision at Ysgol Nebo.	Uncertainty continues regarding the sustainability of education provision at Ysgol Nebo.	stronger links between neighbouring communities. Uncertainty continues regarding the sustainability of education provision at Ysgol Nebo site.
<b>The Welsh Language</b>	No change - Learners continue to receive Welsh medium education.	No change - Learners continue to receive Welsh medium education.	No change – Ysgol Nebo learners continue to receive Welsh medium education.	No change - It is anticipated that Welsh-medium education would be offered as is the current situation.
<b>Additional comments offered by stakeholders during/ following SRP1 and SRP2</b>	<b>Strengths/Opportunities:</b> <ul style="list-style-type: none"> <li>• Staff to learner ratio working well at Ysgol Nebo</li> <li>• A robust inclusive approach at Ysgol Nebo</li> <li>• The health and well-being of Ysgol Nebo learners is central to everything</li> <li>• Small classes are an opportunity/strength</li> <li>• A unique model which is an opportunity to learn in an outdoor environment</li> <li>• Contribute positively to the mental and emotional well-being of the learners.</li> <li>• Potential to improve health and well being</li> <li>• Support the new Curriculum for Wales</li> <li>• Other schools throughout Gwynedd taking advantage of the offer</li> <li>• Potential to develop a facility that is open to the public outside of school hours - would generate income - link with regeneration plans for the local area</li> </ul>	<b>Strengths/Opportunities:</b> <ul style="list-style-type: none"> <li>• Staff to learner ratio working well at Ysgol Nebo</li> <li>• A robust inclusive approach at Ysgol Nebo</li> <li>• The health and well-being of Ysgol Nebo learners is central to everything</li> <li>• Small classes are an opportunity/strength</li> <li>• Contribute positively to the mental and emotional well-being of the learners</li> <li>• Community activities between the school and the community</li> <li>• Up-skilling of Ysgol Nebo's current staff</li> <li>• Raise pupil health and well being</li> <li>• Increase educational opportunities for young people fully engage in school</li> <li>• Smaller class sizes facilitate personalised educational attention and progress</li> <li>• Relieve pressure on other schools that are struggling to meet the needs of learners across the county</li> </ul>	<b>Strengths/Opportunities:</b> <ul style="list-style-type: none"> <li>• Small class sizes</li> <li>• Community activities between the school and the community.</li> </ul>	

	<ul style="list-style-type: none"> <li>• Many benefits to outdoor learning including (i) supporting holistic and academic development (ii) increasing levels of physical activity (iii) raising mental wellbeing (promoting inclusion, equality, and better learning.</li> </ul>	<ul style="list-style-type: none"> <li>• Relatively lower cost compared to supporting young people in specialist provision</li> <li>• School and community resources remains open</li> <li>• School within reasonable distance of homes of learners in the catchment area of Dyffryn Nantlle. Also quite central to other local catchment areas</li> <li>• Learners receiving Category 3 Welsh-medium education in a small school which leads to confident language acquisition.</li> <li>• Reduced incidents of negative behaviours such as bullying, owing to strong family ethos, and presence of teaching staff in social times such as lunchtimes and playtimes</li> <li>• Ties in with strategic planning at council level to meet the needs of learners in the mainstream, as noted in the Education and Economy Scrutiny meeting on 10th April 2025</li> <li>• Overall financial savings compared to 1:1 support in specialist provision</li> <li>• Effective provision to meet pupils' needs at an early stage reduces future costs and dependency on other services which are ultimately more expensive</li> <li>• Mixed age classes support better social and emotional development</li> <li>• No significant expenditure on staff training</li> <li>• Exciting opportunity for Cyngor Gwynedd to lead on an innovative wellbeing project which can be</li> </ul>		
--	--	--	--	--

		<p>rolled out to other areas as example of exemplary practice.</p> <ul style="list-style-type: none"> <li>• Potential to link with research department at Bangor University to recruit a PhD student to undertake a piece of research to highlight the success of the project e.g. Cheme Project measuring social return on investment</li> <li>• Potential to roll out as a solution which rejuvenates not just Ysgol Nebo but other small schools across the county but also Wales as a whole</li> <li>• Collaborate working with support agencies such as CAMHS and school counsellors to provide therapies – to support young people and parents</li> <li>• Effective provision that meets pupil needs reduces the number of families choosing to de-register their children, and has the potential to reduce the trend of increasing numbers on the Elective Home Education register</li> <li>• Increase use of a building</li> </ul> <p><b>Disadvantages:</b></p> <ul style="list-style-type: none"> <li>• Transport arrangements</li> </ul>		
--	--	--	--	--

## 6.2 Impact Assessments - Presumption Against the Closure of Rural Schools

Ysgol Nebo has been designated as a 'rural school' for the purposes of the School Organisation Code.

In addition to the relevant factors in developing proposals, specific assessments must also be undertaken in relation to proposals of this type. Several assessments were conducted in line with the requirements of the Code, in relation to the options considered. The full assessments can be viewed on the Council's website [www.gwynedd.llyw.cymru/YsgolNeboConsultation](http://www.gwynedd.llyw.cymru/YsgolNeboConsultation)

and a summary of these assessments can be seen in the table below:

Option	Assessment of the likely impact on the quality and standards of education	Assessment of the likely impact on different travel arrangements	Assessment of the likely impact on the community
<b>No change - continue with the current situation</b>	Neutral – No change	Neutral – No change  No learner in the Nebo catchment area will need to travel an unreasonable distance to school.	Neutral – No change  Keeping a school and its potential to be a community resource in the village of Nebo.
<b>Federation with a nearby school</b>	Neutral/Partially positive No impact on the provision at Ysgol Nebo.  An opportunity to share good practices between the two schools and possibilities of making better use of resources.	Neutral  The learners would continue to be taught at Ysgol Nebo, and the learners' travel arrangements would continue in the same way.  No learner in the Nebo catchment area will need to travel an unreasonable distance to school.	Neutral  Possibility of community collaboration between the 2 schools.  Keeping a school and its potential to be a community resource in the village of Nebo.
<b>Federation with a nearby school adding a specialist unit for children with additional learning needs in Ysgol Nebo</b>	Neutral/Partially positive – No impact on the provision at Ysgol Nebo.  An opportunity to share good practices between the two schools and possibilities of making better use of resources.  An opportunity to develop an additional resource to support learners with ALN. It is anticipated that it would have a positive impact on the criteria of 'Vulnerable groups, including children with	Neutral  The learners would continue to be taught at Ysgol Nebo, and the learners' travel arrangements would continue in the same way.  No learner in the Nebo catchment area will need to travel an unreasonable distance to school.  The authority would need to provide transport for the ALN unit learners.	Neutral  Possibility of community collaboration between the 2 schools.  Keeping a school and its potential to be a community resource in the village of Nebo.

	Additional Learning Needs'		
<b>Close Ysgol Nebo and offer the learners a place in a nearby school</b>	<p>Partially Positive</p> <p>The assessment notes that the standard of education provided at Ysgol Llanllyfni corresponds to the standard of education provided at Ysgol Nebo.</p> <p>As there are more learners at Ysgol Llanllyfni, it is anticipated that there will be opportunities to teach children in larger groups, with age-appropriate peers to broaden their experiences. Based on this, it is concluded that there would be a positive impact on teaching and learning experiences from teaching Nebo catchment area learners at Ysgol Llanllyfni.</p>	<p>Negative</p> <p>It would be necessary to provide transport for learners from the catchment area of Ysgol Nebo to Ysgol Llanllyfni, in accordance with Cyngor Gwynedd's transport policy.</p> <p>Additional transport costs are anticipated - estimated cost, approximately £17,000 £30,000 per year.</p> <p>Some learners would travel further to school than they do at the moment. No learner in the Nebo catchment area will need to travel an unreasonable distance to school.</p>	<p>Neutral/Partially Negative</p> <p>Lead to the loss of a school and community resource in the village of Nebo. Extensive community use of the Ysgol Nebo building by the community.</p> <p>To mitigate the impact on the community, opportunities are identified to ensure that the Nebo community is aware of the alternative school's activity, and community collaboration between Ysgol Llanllyfni and the Nebo community is encouraged, where appropriate.</p> <p>It is noted that a large proportion of the children who live within the school's catchment area already attend other schools, including Ysgol Llanllyfni, and therefore it is concluded that a link between Ysgol Llanllyfni and the Ysgol Nebo community already exists.</p>
<b>Ysgol Nebo developing into a specialist location for some individual subjects (unique opportunities to carry out fieldwork)</b>	<p>Neutral</p> <p>It is anticipated that the standard of education at Ysgol Nebo would continue, but as no similar model exists in primary school in terms of specialist location for some individual subjects, it is not possible to assess its impact against the quality of education, so the impact is neutral.</p>	<p>Neutral</p> <p>The learners would continue to be taught at Ysgol Nebo, and the learners' travel arrangements would continue in the same way.</p> <p>No learner in the Nebo catchment area will need to travel an unreasonable distance to school.</p> <p>There would be wider travel considerations if Ysgol Nebo site was a specialist location for certain subjects.</p>	<p>Neutral</p> <p>Keeping a school and its potential to be a community resource in the village of Nebo.</p>



<b>Ysgol Nebo to offer a specialist unit for supporting children with additional learning needs</b>	<p>Neutral/Partially positive</p> <p>No impact on the provision at Ysgol Nebo.</p> <p>An opportunity to develop an additional resource to support learners with ALN. It is anticipated that it would have a positive impact on the criteria of 'Vulnerable groups, including children with Additional Learning Needs'.</p>	<p>Neutral</p> <p>The learners would continue to be taught at Ysgol Nebo, and the learners' travel arrangements would continue in the same way.</p> <p>The authority would need to provide transport for the learners of the ALN unit.</p> <p>No learner in the Nebo catchment area will need to travel an unreasonable distance to school.</p>	<p>Neutral – No change to the provision at Ysgol Nebo.</p> <p>Keeping a school and its potential to be a community resource in the village of Nebo.</p>
<b>Ysgol Nebo to offer a Language Unit/Centre for the Dyffryn Nantlle catchment area</b>	<p>Neutral - No impact on the provision at Ysgol Nebo.</p> <p>An opportunity to develop an additional resource to provide a specific service for latecomers in a Language Centre on the school site.</p>	<p>Neutral</p> <p>The learners would continue to be taught at Ysgol Nebo, and the learners' travel arrangements would continue in the same way.</p> <p>No learner in the Nebo catchment area will need to travel an unreasonable distance to school.</p> <p>The authority would need to provide transport for the learners of the language unit.</p>	<p>Neutral –</p> <p>Keeping a school and its potential to be a community resource in the village of Nebo.</p>

<b>A multi-site school - continuing with Ysgol Nebo site</b>	<p>Neutral / Partially positive – No impact on the provision at Ysgol Nebo.</p> <p>An opportunity to share good practices between the school sites and possibilities of making better use of resources.</p>	<p>Neutral</p> <p>The learners would continue to be taught at Ysgol Nebo, and the learners' travel arrangements would continue in the same way.</p> <p>No learner in the Nebo catchment area will need to travel an unreasonable distance to school.</p> <p>Depending on the structure of the new school, there is a possibility that it will be necessary to organise transport between schools.</p>	<p>Neutral – No change to the provision at Ysgol Nebo. Keeping a school and its potential to be a community resource in the village of Nebo.</p>
--	---	---	--

## 6.3 The conclusions of the options appraisal

This section sets out the conclusions of the options appraisal, noting the reasons for rejecting or favouring the option under consideration.

### No change – continue with the current situation

This option would mean that there would be no change to the current provision in the Ysgol Nebo catchment area.

#### Conclusion – Reasons for rejecting the option:

Having weighed up the school's latest situation against the relevant factors, it is concluded that this option does not address the current challenges facing the school, which are set out in section 5 (above), including:

- Numbers of learners and surplus places – The numbers of learners would remain low (11 Reception - Year 6 and 1 Nursery) and significant surplus places (78%) would remain at Ysgol Nebo. Number projections suggest that this will continue, with a projection of 10 Reception - Year 6 learners and 2 Nursery learners on the register by September 2028.
- Small class sizes and a broad age range – There are 2 classes at Ysgol Nebo (September 2025) with 5 learners (Reception – Year 3) and 1 Nursery learner in one class. There are 6 learners (Year 4 - Year 6) in the second class. As a result, there is an age range of up to 5 years in one class and up to 3 years in the second class. As no increase in numbers is anticipated, class sizes would remain small with a broad age range.
- Financial resources – In 2025-26 Ysgol Nebo received a significant additional protection allocation (£70,694) and the average cost per learner (£25,867) is significantly higher than the county average (£5,780). As it is not anticipated that the option would affect the numbers of learners at the school, it is anticipated that this financial challenge would continue.
- Condition and suitability of buildings - £95,000 worth of necessary repair and maintenance work has been identified for Ysgol Nebo building. The option to do nothing would not respond to this challenge.

## Federation with a nearby school

The Code states that federation brings particular benefits to rural schools and states that a proposer must therefore demonstrate how federation has been considered as an option. It has been demonstrated that federating can offer advantages to rural schools in certain situations, specifically from the point of view of strengthening leadership and collaboration opportunities.

This option would ensure continuity in the school's presence in the village of Nebo through a collaborative arrangement with a nearby school or schools, led by a headteacher or headteachers and one governing body. The governing bodies of the individual schools would be dissolved, and a (new) federal governing body would be formed. The identity of the school in question (including name, ethos, and school uniform) would continue, and it would enable the possibility of sharing staff, resources, buildings, and expertise.

The possibility of federating with nearby schools was considered, specifically Ysgol Llanllyfni and Ysgol Bro Lleu.

When considering this option, it must be assessed what any impact would be on how all the schools that would be part of the federation would operate. Noting the challenges facing Ysgol Nebo, it would have to be ensured that such an arrangement would benefit all the children and young people of the federating schools by improving the educational provision.

As Ysgol Nebo's numbers have reached a critical situation with 11 learners (Reception - Year 6) and 1 Nursery learner on the register, it was predicted that there were no clear benefits for other schools from federating with Ysgol Nebo.

There is no clear evidence that forming a federation would lead to an increase in numbers.

### Conclusion – Reasons for rejecting the option:

Following weighing up the advantages and disadvantages of federating, it was concluded that this option did not respond to the main challenges the school is facing, as stated in section 5 (above), including:

- Numbers of learners and surplus places – There is no clear evidence that forming a federation would lead to an increase in numbers. As a result, it is anticipated that federating would mean that the challenge of low learner numbers (11 Reception – Yr.6 and 1 Nursery) and significant surplus places (78%) at Ysgol Nebo would continue.
- Small class sizes and a broad age range – There are 2 classes at Ysgol Nebo (September 2025) with 5 learners (Reception – Year 3) and 1 Nursery learner in one class and 6 learners (Year 4 - Year 6) in the second class. As a result, there is an age range of up to 5 years in one class and up to 3 years in the second class. As it is not anticipated that forming a federation would lead to an increase in numbers, it is anticipated that federating would not respond to the challenge of small classes and a broad age range.
- Financial resources – In 2025-26 Ysgol Nebo received a significant additional protection allocation (£70,694) and the average cost per learner (£25,867) is significantly higher than the county average (£5,780). As it is not anticipated that federating would lead to an increase in the numbers of learners, it is not anticipated that the option would affect the financial allocation of Ysgol Nebo, it is anticipated that this financial challenge would continue.
- Condition and suitability of buildings - £95,000 worth of necessary repair and maintenance work has been identified for Ysgol Nebo building. As the Ysgol Nebo building would continue, federating would not respond to this challenge.

## Federation with a nearby school adding a specialist unit for children with additional learning needs at Ysgol Nebo

The Code states that federation brings particular benefits to rural schools and states that a proposer must therefore demonstrate how federation has been considered as an option. It has been demonstrated that federalisation can offer advantages to rural schools in certain situations, specifically from the point of view of strengthening leadership and collaboration opportunities.

This option would ensure continuity in the school's presence in the village of Nebo through a collaborative arrangement with a nearby school or schools, led by a headteacher or headteachers and one governing body. The governing bodies of the individual schools would be dissolved, and a (new) federal governing body would be formed. The identity of the school in question (including name, ethos, and school uniform) would continue, and it would enable the possibility of sharing staff, resources, buildings, and expertise.

The possibility of federating with nearby schools was considered, specifically Ysgol Llanllyfni and Ysgol Bro Lleu.

When considering this option, it must be assessed what any impact would be on how all the schools that would be part of the federation would operate. Noting the challenges facing Ysgol Nebo, it would have to be ensured that such an arrangement would benefit all the children and young people of the federating schools by improving the educational provision.

As Ysgol Nebo's numbers have reached a critical situation with 11 learners (Reception - Year 6) and 1 part-time learner (Nursery) on the register, it is anticipated that there would be no clear advantages for other schools from federating with Ysgol Nebo and adding an ALN unit on Ysgol Nebo's site.

There is no clear evidence that forming a federation would lead to an increase in numbers.

In addition to forming a federation, this option would also mean adding a location for a ALN unit. Note that the addition of an ALN unit would not affect Ysgol Nebo's numbers, as the learners of the ALN unit would continue to register as learners at their original school. As the ALN unit would be located within the Ysgol Nebo building, it is anticipated that the option would lead to a reduction in the school's capacity, and as a result, a reduction in the number of surplus places at Ysgol Nebo.

### Conclusion – Reasons for rejecting the option:

Following weighing up the advantages and disadvantages of federating and locating an ALN unit on the Ysgol Nebo site, it was concluded that this option would not adequately respond to the main challenges the school is facing, as stated in section 5 (above), including:

- Numbers of learners and surplus places - Although there would be a reduction in the school's capacity and surplus places as a result of locating the ALN unit within the Ysgol Nebo building, as there is no clear evidence that federating would lead to an increase in numbers, it is anticipated that the challenge of low learner numbers at Ysgol Nebo would continue if this option were to be implemented. As the learners of the ALN unit would continue to register as learners in their original school, it is not anticipated that the inclusion of an ALN unit on a school site would affect the numbers. As a result, it is predicted that numbers would remain low.
- Small class sizes and a broad age range – There are 2 classes at Ysgol Nebo (September 2025) with 5 learners (Reception – Year 3) and 1 Nursery learner in one class and 6 learners (Year 4 - Year 6) in the second class. As a result, there is an age range of up to 5 years in one class and up to 3 years in the second class. As it is not anticipated that the option would lead to an increase in numbers, it is anticipated that this option would not respond to the challenge of small classes and a broad age range.

- Financial resources – In 2025-26 Ysgol Nebo has received a significant additional protection allocation (£70,694) and the average cost per learner (£25,867) is significantly higher than the county average (£5,780). As it is not anticipated that this option would lead to an increase in the number of learners, it is not anticipated that this option would affect Ysgol Nebo's financial allocation. It is anticipated that locating an ALN unit on the site may offset some of the maintenance costs of the school building. However, from the perspective of the school's core allocation, if Ysgol Nebo were to form a federation with a nearby school as well as locating an ALN Unit on the site, as it is not anticipated that the option would affect the numbers of the school's learners, it is anticipated that this financial challenge would continue.
- Condition and suitability of buildings - £95,000 worth of necessary repair and maintenance work has been identified for Ysgol Nebo building. Locating an ALN Unit within the Ysgol Nebo building may partly offset the school's maintenance costs. However, as Ysgol Nebo would continue, this option would not adequately respond to this challenge.

### Close Ysgol Nebo and offer the learners a place in a nearby School (Ysgol Llanllyfni)

This option would involve closing Ysgol Nebo and moving the learners to be educated at Llanllyfni. This proposal was put forward following the options appraisal, with the outcome of that appraisal noting that no other option addressed the main challenges faced by the school. This proposal is detailed further in the document.

Ysgol Llanllyfni is considered the 'nearby school' as it is the geographically closest school to Ysgol Nebo. The school is located approximately 1.6 miles from the site of Ysgol Llanllyfni.

Ysgol Llanllyfni also offers itself as the obvious option for the alternative school as 44% of primary age children in Ysgol Nebo's catchment area (Nursery – Year 6) already attend Ysgol Llanllyfni and there is sufficient capacity there to receive learners from Ysgol Nebo's catchment area.

Following this, it is proposed to extend the catchment area of Ysgol Llanllyfni to include the catchment area of Ysgol Nebo for the future.

### Ysgol Nebo to develop into a specialist location for some individual subjects (unique opportunities to carry out fieldwork)

This option would mean that Ysgol Nebo would continue and develop into a specialist location for some individual subjects.

Ysgol Nebo's numbers have reached a critical situation with 11 learners (Reception - Year 6) and 1 part-time learner (Nursery) on the roll. It is not anticipated that this option would lead to an increase in the numbers of Ysgol Nebo learners.

### Conclusion – Reasons for rejecting the option:

Having weighed up the school's latest situation against the relevant factors, it is concluded that this option does not respond to the main challenges the school is facing, as stated in section 5 (above), including:

- Numbers of learners and surplus places - Numbers of learners would remain low (11 Reception - Year 6 and 1 Nursery) and significant surplus places (78%) would remain at Ysgol Nebo. Number projections suggest that this will continue.
- Small class sizes and broad age range – There are 2 classes at Ysgol Nebo (September 2025) with 5 learners (Reception – Year 3) and 1 Nursery learner in one class and 6 learners (Year 4 - Year 6) in the second class. As a result, there is an age range of up to 5 years in one class and up to 3 years in the second class. As it is not anticipated that the option would lead to an increase in numbers, class sizes would remain small with a broad age range.
- Financial resources – In 2025-26 Ysgol Nebo has received a significant additional care allocation (£70,694) and the average cost per learner (£25,867) is significantly higher than the county average (£5,780). As the option would not affect the numbers of learners at the school, it is anticipated that this financial challenge would continue.
- Condition and suitability of buildings - £95,000 worth of necessary repair and maintenance work has been identified for Ysgol Nebo building. This option would not respond to this challenge.

### Ysgol Nebo to offer a specialist unit for supporting children with additional learning needs

This option was proposed during the local discussions. Specifically, the Governing Body put forwards the following option:

*"Ysgol Nebo to offer a site as a provision to support and nurture children with social and emotional needs, where mainstream education is challenging for them, including pupils with IDP for social, emotional and behavioural needs and other young people with mental health needs including anxiety and neuro-diversity."*

This option was interpreted as that Ysgol Nebo would continue, but it would also mean adding an area for an ALN unit on the school site in order to offer ALN provision to the children who needed additional support.

As the school building would need to be modified to provide a location for the specialist unit, the school's capacity would likely be reduced and therefore it is anticipated that the option would lead to a reduction in surplus places.

However, Ysgol Nebo's numbers have reached a critical situation with 11 (Reception - Year 6) learners and 1 part time learner (Nursery) on the register. As the learners of the ALN unit would continue to register as learners in their original school, it is not anticipated that the inclusion of an ALN unit on a school site would affect the numbers. As a result, it is anticipated that Ysgol Nebo's numbers would remain low, and it is not anticipated that it would respond to the challenges the school is facing, as stated in section 5 (above).

#### Conclusion – Reasons for rejecting the option:

Following weighing up the advantages and disadvantages of this option for Ysgol Nebo, it is concluded that this option does not adequately respond to the main challenges the school faces, as stated in section 5 (above), including:

- Numbers of learners and surplus places – Although there would be a reduction in the school's capacity and surplus places as a result of locating the ALN unit within the Ysgol Nebo building, as the learners of the ALN unit would continue to register as learners at their original school, it is not anticipated that the inclusion of an ALN unit on the school site would affect Ysgol Nebo's numbers. As a result, it is predicted that the numbers would remain low.

- Class sizes and age range - There are 2 classes at Ysgol Nebo (September 2025) with 5 learners (Reception – Year 3) and 1 Nursery learner in one class and 6 learners (Year 4 - Year 6) in the second class. As a result, there is an age range of up to 5 years in one class and up to 3 years in the second class. As it is not anticipated that the option would lead to an increase in numbers, class sizes would remain small with a broad age range.
- Financial resources – In 2025-26 Ysgol Nebo has received a significant additional protection allocation (£70,694) and the average cost per learner (£25,867) is significantly higher than the county average (£5,780). As it is not anticipated that the option would affect the numbers of learners at the school, it is anticipated that this financial challenge would continue.
- Condition and suitability of buildings - £95,000 worth of necessary repair and maintenance work has been identified for Ysgol Nebo building. This option would not respond to this challenge.

### Ysgol Nebo to offer a Language Unit for the Dyffryn Nantlle catchment area

This option would mean that Ysgol Nebo would continue, but it would also mean adding a language immersion unit on the school site to offer an immersion service in Welsh to new speakers.

As the school building would need to be modified to provide a location for the language unit/centre, the school's capacity would likely be reduced and therefore it is anticipated that the option would lead to a reduction in surplus places.

However, Ysgol Nebo's numbers have reached a critical situation with 11 learners (Reception - Year 6) and 1 part time learner (Nursery) on the register. As the learners of the language unit/centre would continue to register as learners in their original school, it is not anticipated that the inclusion of a language centre on the school site would affect the Ysgol Nebo numbers. As a result, it is anticipated that Ysgol Nebo's numbers would remain low, and it is not anticipated that it would respond to the challenges the school is facing, as stated in section 5 (above).

#### Conclusion – Reasons for rejecting the option:

Following weighing up the advantages and disadvantages of this option for Ysgol Nebo, it is concluded that this option does not adequately respond to the main challenges the school faces, as stated in section 5 (above), including:

- Numbers of learners and surplus places - Although there would be a reduction in the school's capacity and surplus places as a result of locating the language unit/centre within the Ysgol Nebo building, as the learners of the language unit would continue to register as learners in their original school, it is not anticipated that the inclusion of a language unit on the school site would affect the numbers. As a result, it is predicted that numbers would remain low.
- Class sizes and age range – There are 2 classes at Ysgol Nebo (September 2025) with 5 learners (Reception – Year 3) and 1 Nursery learner in one class. There are 6 learners (Year 4 - Year 6) in the second class. As a result, there is an age range of up to 5 years in one class and up to 3 years in the second class. As it is not anticipated that the option would lead to an increase in numbers, class sizes would remain small with a broad age range.
- Financial resources – In 2025-26 Ysgol Nebo has received a significant additional protection allocation (£70,694) and the average cost per learner (£25,867) is significantly higher than the county average (£5,780). As it is not anticipated that the option would affect the numbers of learners at the school, it is anticipated that this financial challenge would continue.
- Condition and suitability of buildings - £95,000 worth of necessary repair and maintenance work has been identified for Ysgol Nebo building. This option would not respond to this challenge.



## Establish a multi-site school, continuing with Ysgol Nebo site

This option would mean merging a number of local schools, by closing the schools and establishing one multi-site school which would include Ysgol Nebo site. The option would enable the possibility of sharing resources, buildings and expertise.

This option would ensure continuity in the presence of a school site in the village of Nebo by establishing a multi-site school, led by a headteacher and one governing body. The governing bodies of the individual schools would be dissolved and a (new) governing body would be formed for the multi-site school.

Under this option, there would be staffing implications that can lead to uncertainty and redundancies. The positions of all members of staff in each of the schools that would form part of the multi-site school would come to an end. The new appointments would be made by the shadow governing body of the new multi-site school.

Ysgol Nebo's numbers have reached a critical situation with 11 learners (Reception - Year 6) and 1 part-time learner (nursery) on the roll. It is not anticipated that this option would lead to an increase in the numbers of learners on Ysgol Nebo site.

### Conclusion – Reasons for rejecting the option:

After weighing up the advantages and disadvantages, it is concluded that this option does not respond to the main challenges the school is facing, as stated in section 5 (above), including:

- Numbers of learners and surplus places - It is anticipated that the numbers of learners on Ysgol Nebo site would remain low (11 Reception - Year 6 and 1 Nursery) together with significant surplus places (78%).
- Class sizes and age range – There are 2 classes at Ysgol Nebo (September 2025) with 5 learners (Reception – Year 3) and 1 Nursery learner in one class. There are 6 learners (Year 4 - Year 6) in the second class. As a result, there is an age range of up to 5 years in one class and up to 3 years in the second class. As it is not anticipated that the option would lead to an increase in the numbers of learners at Ysgol Nebo site, it is likely that small classes would continue at the Nebo site with a broad age range within the classes.
- Financial resources – Establishing a multi-site school would mean establishing one multi-site school, with one allocation for all the sites. It is anticipated that Ysgol Nebo site would continue to receive an additional amount to the core allocation through the minimum staffing protection
- Condition and suitability of buildings - £95,000 worth of necessary repair and maintenance work has been identified for Ysgol Nebo building. As the Ysgol Nebo site would continue, it is not anticipated that the option would respond to this challenge.



## 7. The Proposal

### A Summary of the Proposal

Following an appraisal of the options, the preferred direction and the proposal which is the subject of this statutory consultation is to close Ysgol Nebo on 31 December 2026, and the learners to be educated at Ysgol Llanllyfni, namely the 'alternative school', from 1 January 2027.

<b>Alternative School</b>	Ysgol Llanllyfni	
<b>Age Range</b>	3-11	
<b>School Category (<i>community, voluntary assisted, voluntary controlled</i>)</b>	Community	
<b>Language Category</b>	Welsh Medium, Category 3	
<b>Implementation date</b>	31 December 2026 - 1 January 2027	
<b>Projected numbers - January 2027 (Projections for September 2026)</b>	<i>Nursery</i> 14	<i>Reception – Yr.6</i> 75
<b>Capacity (based on Welsh Assembly Circular 21/2011: 'Measuring the Capacity of Schools in Wales')</b>	<i>Nursery</i> 14	<i>Reception – Yr.6</i> 103
<b>Quality of the building and classrooms (Building Condition Category)</b>	B	

At present, Ysgol Nebo and Ysgol Llanllyfni both have community status, and on this basis, in terms of legal category, it is proposed that a 'community' status is the option for the statutory consultation.

As in all similar situations, parents have the right to choose an alternative location for their children if they so wish.

This option would result in:

- a) Reducing the number of surplus places within the schools
- b) Offering experiences for learners to socialise and collaborate with peers on a daily basis
- c) Educating the children in more suitably sized classes
- d) Reducing the range of cost per learner for all the County's learners

This section includes the rationale why this is the preferred option and why this is the subject of this statutory consultation.

#### 7.1. Reason for the Proposal

The reason for the proposal to close the school is the need to address the school's vulnerable situation. The main challenges faced by the school is that there is a critical situation in terms of low numbers with 11 full-time learners (Reception - Year 6), ac 1 part-time learner (Nursery), registered at the school in the September 2025 census, and projections show that the numbers will remain low in the coming years with a projection of 10 full-time learners (Reception - Year 6) and 2 part time learners (Nursery) on the register by September 2028. Learners at the school are taught in two classes – one class of 5 (+1 Nursery) and one class of 6 learners.

## 7.2 Quality of Education

The Council is committed to providing an education of the highest possible quality which will give the County's children the experiences, skills and confidence which will enable them to develop to be bilingual, successful and well-rounded citizens.

One of the priorities is to provide the best possible learning experiences for every learner within the County, and ensuring an exciting and broad curriculum, as well as extra-curricular activities which motivates them to learn and understand, leading to improving standards.

Leadership, good governance and management structures are key factors in terms of enabling underperforming schools to ultimately improve their performance.

It should be noted that concern about the present quality of education at Ysgol Nebo is not the basis of this proposal. Indeed, due to the low learner-teacher ratio, the children are making good progress. However, the main challenges of low numbers and small class sizes facing the school means that there are limitations on the school's ability to provide opportunities for learners to nurture and take advantage of extracurricular, social experiences, and the ability to collaborate with pairs and groups of peers in the classroom in accordance with the requirements of the curriculum.

### 7.2.1. Summary of Estyn reports:

School	Inspection Year	Standards	Wellbeing and attitudes to learning	Teaching and learning experiences	Care, support and guidance	Leadership and management
Nebo	2017	Good	Good	Good	Good	Good
		How good are the outcomes?		How good is the provision?		How good are the leadership and management?
Llanllyfni	2017	Good		Good		Good

Source: Estyn's Website

### 7.2.2. The Quality of the Education and Standards at the Two Schools Included in the Consultation:

Estyn inspection reports note that the standard of the education provision at both schools is Good.

Ysgol Nebo was last inspected in October 2017. The inspection concluded that the school's current performance was Good.

Ysgol Llanllyfni was last inspected in October 2025, the result of the latest inspection will be published in December 2025. It is noted in the March 2017 inspection report for Ysgol Llanllyfni that the school's current performance is Good.

The alternative school offers education of equal standard at least and would provide learners with more opportunities for collaborating and socialising with their peers and would enable learners to benefit from a range of curricular and extracurricular experiences.

#### Ysgol Nebo

During the latest Estyn inspection in 2017, Estyn noted that performance of Ysgol Nebo was Good. It is stated in the Estyn report:

*“As pupils move through the school, nearly all, including those with additional learning needs, make sound progress and achieve well by Year 6. Nearly all pupils behave exceptionally well both indoors and outdoors. They show a very positive attitude towards their work, and they persevere with their tasks particularly well”*

In addition, Estyn noted that staff established a particularly good working relationship with the learners, planning interesting activities that stimulate learners to work hard. It is noted that the headteacher provides *“robust leadership, which ensures a clear strategic direction for the school”* and that all staff are *“dedicated and enthusiastic, and work together closely as a team”*. It was noted that governors had *“detailed understanding of the school’s strengths and areas that need to be developed further”* and *“use their knowledge purposefully to challenge the school and hold it to account for its performance.”*

#### Ysgol Llanllyfni

During the inspection in 2017, Estyn noted that the performance of the school was Good. It is stated in the Estyn report:

- *“Most pupils make beneficial progress during their time there*
- *Most pupils’ speaking and listening skills are good*
- *Most pupils’ reading and writing skills are good in both languages*
- *Pupils’ understanding of the importance of eating and drinking healthily is good*
- *Members of the school council are very active and their decisions have a positive effect on pupils’ wellbeing*
- *Pupils across the school are polite and caring*
- *There is very effective co-operation between teachers and the learning support staff, which succeeds in providing very rich support to pupils*
- *Pupils with additional learning needs make good progress against their target”*

In addition, Estyn noted that the headteacher has *“a robust vision to promote pupils’ wellbeing and create a supportive ethos for them. He has succeeded in sharing this vision successfully among the staff, governors and parents... As a result, all staff have a strong commitment to developing and promoting continuous and sustainable improvements.”*

#### Assessment of the likely impact on the quality and standards of education:

An assessment of the likely impact on the quality and standards of education was carried out on all the options considered by the Council. A copy of the full report can be viewed on the Council’s website [www.gwynedd.llyw.cymru/YsgolNeboConsultation](http://www.gwynedd.llyw.cymru/YsgolNeboConsultation).

The table below shows the likely impact of the proposal on the five relevant Estyn inspection areas (September 2017) as well as factors identified in the School Organisation Code:

Impact Criteria	Description	Status of the impact and the work
Standards and general progress of specific groups and in terms of skills	The result of the latest Estyn inspection for the Ysgol Nebo standards indicators was 'Good', while the result of the latest Estyn inspection for Ysgol Llanllyfni was also 'Good'. Based on this, it is concluded that there would be a neutral effect on this criteria by educating the learners at Ysgol Llanllyfni.	Neutral
Well-being and attitudes to learning	The result of the latest Estyn inspection for Wellbeing at Ysgol Nebo and at Ysgol Llanllyfni was 'Good' in their last inspections in 2017. Based on the findings of these inspections, it is concluded that there would be a neutral effect on this criteria by educating the learners at Ysgol Llanllyfni.	Neutral
Learning and teaching experiences	The result of the 'Learning experiences' indicator for Ysgol Nebo and Ysgol Llanllyfni in their last inspections in 2017 was 'Good'. However, as there are more learners at Ysgol Llanllyfni it is anticipated that there will be an opportunity to teach children in larger groups and with age-related peers to expand on their experiences. Based on this, it is concluded that there would be a positive impact on teaching and learning experiences from teaching learners in the Nebo catchment area at Ysgol Llanllyfni.	Positive
Care, support and guidance	The result of the 'Care, support and guidance' indicator at Ysgol Nebo and Llanllyfni in their last inspection in 2017 was 'Good'. As a result, it is considered that this option would have a neutral effect.	Neutral
Leadership and management	It was noted in the last Estyn report that the leadership and management of Ysgol Nebo and Ysgol Llanllyfni were 'Good'. Based on the findings of these inspections, it is concluded that there would be a neutral effect on leadership and management from teaching learners from the Nebo catchment area at Ysgol Llanllyfni.	Neutral
Vulnerable groups, including children with Additional Learning Needs (ALN)	Support is provided to groups vulnerable to disadvantage, including children with additional learning needs, in accordance with the Authority's policy and the requirements of the Additional Learning Needs (Wales) Act 2018 in every school in Gwynedd. When planning staffing (e.g., the role of the ALNCo) and the provision map, the requirements on schools are challenging, and this becomes more apparent when considering the requirements on smaller schools. In larger schools, the conditions for the additional learning needs coordinator are better, and meeting the statutory requirement is easier as a result. In addition, responding to the learners' needs is also easier in larger schools, as they may be able to maintain an intervention group to target specific needs. The provision map is broader in larger schools to respond to the requirement. As a result, since learners would be offered a place in a school with a higher number of learners, it is expected that the impact of this option on this criterion would be positive.	Positive
Provision that is at least equivalent to what is available to the learners at the time (including those with ALN)	The result of Estyn's inspection for Ysgol Nebo's 'Standards' was 'Good', as was the result of Ysgol Llanllyfni's inspection. Based on the information from these inspections, no impact on learners' standards is anticipated from teaching learners from the catchment area of Ysgol Nebo at Ysgol Llanllyfni. As a result, it is anticipated that the provision in the alternative school would be equivalent to what is currently available to the learners at Ysgol Nebo.	Neutral

*The above assessment was completed based on information in the Ysgol Nebo Estyn report 2017, and the Ysgol Llanllyfni Estyn report 2017.*

The above assessment of the likely impact on the quality and standard of education, concludes that implementing the proposal to close Ysgol Nebo and transfer learners to Ysgol Llanllyfni would likely have a positive impact, or at least a neutral impact.

Based on the result of the above assessments and comparing Estyn's reports, it is concluded that the standard of education provided at Ysgol Llanllyfni is equivalent to the standard of education provided at Ysgol Nebo. As there are more learners at Ysgol Llanllyfni, it is anticipated that there will be an opportunity to teach children in larger groups, with age-related peers to broaden their experiences. Based on this, it is concluded that there would be a positive impact on teaching and learning experiences from teaching learners in the Nebo catchment area at Ysgol Llanllyfni.

As a result, it is predicted that the likely effect of implementing the proposal to close Ysgol Nebo and offer the learners a place at Ysgol Llanllyfni would be neutral/partially positive.

The proposal will not affect the provision of the full curriculum, including the Foundation Phase, as Ysgol Llanllyfni already provides education in the Foundation Phase and Key Stage 2.

### 7.3 Class Sizes and Appropriate Age Ranges

Our expectation is that there should be appropriately sized classes in primary schools, as far as possible, so that children in the county receive the best possible experiences and opportunities.

Cyngor Gwynedd aims to have suitable class sizes, with no more than two age-ranges within the same class in the primary sector. The age range within classes is also a reason for ensuring a suitable provision for the future.

In September 2025, Ysgol Nebo learners were educated in two classes – one class of 6 (Nursery – Year 3), and one class of 6 (Year 4 – Year 6).

The average class size at Ysgol Llanllyfni in September 2025 is 18.

The table below shows the current class sizes at Ysgol Nebo and Ysgol Llanllyfni. At present, Ysgol Nebo learners are educated in age groups that span up to five age ranges.

School	Nursery	Reception	Yr. 1	Yr. 2	Yr.3	Yr.4	Yr.5	Yr.6	Total	Number of classes	Largest class	Smallest class	Average class size
Nebo	1	1	2	1	1	3	3	0	12	2	6	6	6
Llanllyfni	13	12	10	8	5	6	9	9	72	4	22	13	18

Source: September 2025 Data

By proceeding to close Ysgol Nebo, and transferring the learners to Ysgol Llanllyfni, the children will be educated in classes which are more appropriate in size in comparison to the current situation.

Decisions on class sizes and the distribution of school staffing resources would be a matter for Ysgol Llanllyfni Governors.

## 7.4 Learner Numbers

The latest projections, based on the September 2025 census, show that numbers at Ysgol Nebo will remain low over the next 5 years, as noted in the table below:

**Table 1 - Number projections for Ysgol Nebo**

	N	R	1	2	3	4	5	6	Total	
									Nursery	Reception – Yr.6
September 2025	1	1	2	1	1	3	3	0	1	11
September 2026 Projections	2	1	1	2	1	1	3	3	2	12
September 2027 Projections	2	2	1	1	2	1	1	3	2	11
September 2028 Projections	2	2	2	1	1	2	1	1	2	10
September 2029 Projections	2	2	2	2	1	1	2	1	2	11
September 2030 Projections	2	2	2	2	2	1	1	2	2	12

*Source: September 2025 Census (2029-2030 Projections compiled by the LA based on September 2025 Census)*

The table below shows the projections for the area should the proposal be implemented:

Reception – Yr.6	Ysgol Llanllyfni	Ysgol Bro Lliffon	Ysgol Brynaerau	Ysgol Bro Lleu	Ysgol Talysarn	Ysgol Baladeulyn	Total
September 2025	59	134	53	167	84	6	503
September 2026 Projections	63	126	48	169	90	8	504
September 2027 Projections	77	115	45	173	89	8	507
September 2028 Projections	82	102	48	170	85	7	494
September 2029 Projections	89	94	45	170	81	8	487
September 2030 Projections	94	85	42	166	83	8	478

*Source: September 2025 Census (2029-2030 Projections compiled by the LA based on September 2025 Census)*

### 7.4.1. Surplus Places

Ysgol Nebo has 40 (78%) surplus places (Reception - Year 6). There are 44 (43%) surplus places at Ysgol Llanllyfni. By including the Nursery capacity and numbers for both schools, Ysgol Nebo has 46 (79%) surplus places and Ysgol Llanllyfni has 45 (38%) surplus places.

59 learners (Reception-Year 6) and 13 Nursery learners attend Ysgol Llanllyfni at present. Projections for Ysgol Llanllyfni show that there will be 72 learners (Reception-year 6) and 11 Nursery age learners at the school in September 2028. Numbers at Ysgol Llanllyfni are more robust and sustainable for the future.

With 44 surplus places (and 1 surplus places for Nursery), Ysgol Llanllyfni has sufficient capacity for the number of learners from both schools currently and for the next three years.

When considering the joint capacity of Ysgol Nebo and Ysgol Llanllyfni (which is a capacity of 154 Reception - Year 6 and 175 Nursery - Year 6), it is anticipated that the implementation of the proposal to close Ysgol Nebo and transfer the learners of the catchment area to Ysgol Llanllyfni would reduce the total number of surplus places in the catchment area of Ysgol Nebo and the catchment area of Ysgol Llanllyfni from 84 (55%) to 33 (32%) (Reception – Yr.6), and from 91 (52%) to 33 (28%) when considering the numbers and capacity of the Nursery.

## 7.5 Management and Leadership

Cyngor Gwynedd acknowledges the importance of strong leadership at a school as a way of maintaining and improving standards. The following steps are in place to ensure strong leadership at Gwynedd schools for the future:

- Support schools to collaborate in a cooperative partnership in order to develop a system that is self-improving
- Support schools to collaborate in partnership with their cluster schools to share best practices
- Schools to work in partnership with the Local Authority to empower leadership at every level within our schools
- Encourage prospective leaders to gain the NPQH qualification
- Encourage prospective leaders to commit to the Future Leaders Programme to ensure leadership succession within our schools

Our expectation is that headteachers will receive sufficient opportunity to provide professional leadership and management for their schools. We also expect governing bodies to lead schools effectively within their budgets for the benefit of learners. In addition, we will expect schools to have the best staff to provide an education of the best possible quality.

Ysgol Llanllyfni has a permanent headteacher. The headteacher is committed to teaching 50% of the time (2.5 days) and is allocated 2.5 non-contact days for administrative matters and leadership. In addition to the full-time headteacher, Ysgol Llanllyfni employs 2 full-time teachers, 1 part-time teacher, 3 teaching assistants, a part-time clerical officer, and a part-time lunchtime supervisor.

In addition, the Estyn report (2017) notes that Ysgol Llanllyfni Governing Body *“are conscientious and dedicated. Activities such as lesson observations provide useful opportunities to raise their awareness of standards and the quality of provision.”*

Currently, Ysgol Nebo does not have a permanent headteacher. Instead, Ysgol Nebo employs a part-time strategic headteacher (equivalent to 0.2 full-time), a full-time primary teacher, 2 teaching assistants, a lunchtime supervisor, and a clerk to the governors. Up to four days a week, the primary teacher takes on the role of the head teacher in charge and has a teaching commitment equivalent to 4.5 days.

Due to the fact that there are temporary arrangements in place for the leadership of the school, and that there is no certainty regarding permanent arrangements of the leadership for the future, the leadership situation at Ysgol Nebo has been one of the considerations for change.

### 7.5.1. Impact on Management and Leadership

There is a need to ensure working conditions which allow headteachers to establish a productive and positive environment so that learners reach their potential. Headteachers are also responsible for ensuring a culture of ongoing improvements which are appraised and offer support to teachers and other middle managers at their schools. One of the greatest challenges facing the primary sector is that headteachers do not have sufficient time to lead in very small schools, and at times there is a need to educate a broad range of children of various ages and abilities in the same class. Estyn (2013) notes:

*“Leadership and processes to improve quality are usually better developed in large primary schools. In small primary schools, many headteachers have a significant teaching responsibility that limits the time they can devote to leading and managing and they have fewer opportunities to evaluate standards and to drive improvement.”*



Schools with higher numbers of children can offer a more robust structure for planning and providing the curriculum through establishing middle management teams and subject and curriculum leaders. In addition, a number of responsibilities can be centralised, such as those relating to the curriculum and managerial matters, which can be a burden for small organisations, e.g. evaluation arrangements, development plans, performance management. It is a greater challenge for small schools to be able to create professional development training programmes and specific development plans, as well as offering fair opportunities for staff to develop subject expertise and share good practice with peers.

## 7.5.2. Governance and Staffing Matters

### Governing Body

If the proposal to close Ysgol Nebo and educate the learners at Ysgol Llanllyfni is implemented, should Ysgol Nebo close on 31 December 2026, it would mean that the governing body of the Ysgol Nebo would be dissolved.

No changes are anticipated to the current governing body of Ysgol Llanllyfni.

### Staffing Implications

If the proposal to close Ysgol Nebo is implemented on 31 December 2026, the staffing implications would lead to redundancies as the posts would end when the school closes. There will be a specific consultation with staff and Union representatives as part of the statutory consultation period. Any redundancies arising as a result of the proposal would be required to comply with the relevant employment law and the Cyngor Gwynedd redundancy scheme. Clear and open communication with staff will be a core part of the implementation of any proposal.

During the consultation, a drop-in session will be held where staff from the Council's Human Resources Service will be in attendance, if any member of staff wishes to discuss their situation. Staff will also be welcome to contact the Human Resources service directly, if they wish to have a one-to-one discussion. A support package will be offered, including training, if appropriate, to all staff affected by the proposal.

## 7.6 Nursery and Early Years Provision

Ysgol Nebo and Ysgol Llanllyfni provide education for children aged 3-11. Part-time nursery places (10 hours a week) are offered at both schools to children in the September following their third birthday for a full school year.

### **Nursery class numbers, projections and capacity in the two schools:**

School	Capacity	September 2025 Numbers	Projections				
			September 2026	September 2027	September 2028	September 2029	September 2030
Nebo	7	1	2	2	2	2	2
Llanllyfni	14	13	12	12	11	12	12

Source: September 2025 Census

There is 1 surplus place in the nursery class at Ysgol Llanllyfni. It is therefore anticipated that there will be a sufficient number of nursery places at the alternative school, namely Ysgol Llanllyfni, if the proposal is implemented. Welsh-medium provision, Category 3, is provided at Ysgol Llanllyfni, as is currently offered at Ysgol Nebo; therefore, no adverse effect on the Welsh language in terms of nursery provision is anticipated.



Additionally, a Cylch Meithrin is located on the site of Ysgol Llanllyfni, providing early years care and education through the medium of Welsh to pre-school children. The collaboration between the Cylch and Ysgol Llanllyfni ensures a smooth transition for children from the Cylch Meithrin to the nursery class. The Cylch provides places for children aged 2 to 4 and offers the 'Flying Start' provisions, which includes 10 hours of Nursery Education (Foundation Learning), alongside wraparound care for nursery-aged children from Ysgol Llanllyfni and neighbouring schools. The Cylch Meithrin is also part of the Childcare Scheme, which provides up to 30 hours per week of free early years childcare. Children can benefit from the Childcare Offer from the beginning of the term following their third birthday until the September after they turn 4.

There is no early years provision at Ysgol Nebo, except for the school's Nursery class.

## 7.7 Financial Resources

It is expected that Cyngor Gwynedd will make the best possible use of the financial resources available to provide education in the County.

This is increasingly important considering the very challenging climate currently facing the Council. Therefore, it is important that efforts are made to use resources as effectively as possible within the education and training system, for the benefit of children and young people. This includes all resources - human, technical, buildings and finances. There is substantial expenditure on schools where there is a high percentage of surplus places.

The expenditure per learner varies greatly from school to school.

For the 21st Century, there is a need to ensure that Gwynedd has a network of schools of the right type in the right locations across the County. Reducing the number of surplus places and ensuring schools of a robust size would provide opportunities to develop inclusive elements. Acting in this way is essential if we are to promote equal opportunities across the County and reduce the impact of poverty on the lives of children and young people.

The average cost per learner at Ysgol Nebo is £25,867 per learner on average, compared with the average cost per learner in Gwynedd of £5,780. It is estimated that implementing the proposal would result in a cost per learner of £5,798 at Ysgol Llanllyfni in the 2026–27 financial year.

School	PROPORTION OF THE BUDGET 2025-26		Minimum Staffing Protection*
	Total Budget	Cost per learner	
<b>Nebo</b>	£206,936	£25,867	£70,694
<b>Llanllyfni</b>	£402,831	£5,768	-
<b>Average of the County's Primary Schools</b>	-	£5,780	<b>County Primary Total:</b> £1,385,626

*\*The protection policy ensures at least a headteacher and a teacher in each school with more than 15 full time learners, and a headteacher and a classroom assistant in schools with fewer than 15 full time learners.*

Ysgol Nebo has received a contribution of £70,694 from the minimum staffing protection policy this year (2025–26). This guarantees a headteacher and a classroom assistant (in schools that have fewer than 15 full-time learners).

From a revenue-cost perspective, if the proposal were implemented, and if all Ysgol Nebo learners were to transfer to Ysgol Llanllyfni, based on an estimate of the 2026–27 budget — the year in which the proposal would be implemented (which is based on projected learner numbers provided by the schools headteachers in September 2024):

- it is anticipated that the proposal would create an annual saving of £143,000, minus additional transport needs costs (up to £30,000) — a total of approximately £113,000 per year.
- it is anticipated that Ysgol Llanllyfni’s core budget allocation would increase to £468,000, and the cost per learner would be £5,798.

Any savings in revenue costs will be retained within the Gwynedd Schools sector.

Note that there is no capital costs associated with the proposal.

## 7.8 Learning Environment

The Council's aim is to provide quality primary education buildings in the County by undertaking structured planning, providing appropriate rooms for school headteachers and teachers and access to appropriate playing fields and a hall for the children. Buildings also need to comply with the requirements for the Foundation Phase and the curriculum.

The table below includes the condition of buildings at Ysgol Nebo and Ysgol Llanllyfni, as well as the required maintenance costs.

School	Condition Category	Condition Defects	Cost of Required Maintenance Work
Ysgol Nebo	B	<ul style="list-style-type: none"> <li>• Roof and gutter repairs needed</li> <li>• Toilets need upgrading</li> <li>• External walls need re-rendering</li> <li>• Some windows need replacing</li> </ul>	£95,000
Ysgol Llanllyfni	B	<ul style="list-style-type: none"> <li>• Need to upgrade the external doors</li> </ul>	£15,000
Key to the Categories:			
<b>A</b>	GOOD (No Deterioration)	<b>C</b>	POOR (Major Deterioration)
<b>B</b>	SATISFACTORY (Minor Deterioration)	<b>D</b>	BAD (Has reached the end of its lifespan)

Source: Cyngor Gwynedd Housing and Property Department

The Council carries out annual condition surveys on all its property. The annual reviews contribute to the Authority's Asset Management Plan and allows for the prioritisation of the schools' maintenance programme.

### Ysgol Nebo

The condition of the Ysgol Nebo building has been assessed as being in category ‘B’, which is satisfactory, with areas of deterioration requiring maintenance work. The condition survey notes the need to repair the roof and gutters, upgrade the toilets, re-render external walls, and replace some windows.

### Ysgol Llanllyfni

The condition of Ysgol Llanllyfni has been identified as being in category ‘B’, with the survey noting the need to upgrade external doors.

## 7.9 The Community

The Council completed an assessment of the impact of the options on the community in order to compare the impact they would have on the communities in question. A copy of the full report is available on the Council's website [www.gwynedd.llyw.cymru/YsgolNeboConsultation](http://www.gwynedd.llyw.cymru/YsgolNeboConsultation).

When developing any proposals relating to school organisation, full consideration must be given to the potential impact on the community.

The table below notes the current community use made of the buildings of both schools.

	Nebo	Llanllyfni
Play Groups (School holidays)		
Aelwyd yr Urdd		✓
Plays		
Voluntary Groups	✓	✓
Coffee Morning/Evening	✓	✓
Community Auction		
Community Library		
Choir Practice		
Welsh for Adults		
Town/Community Council Meeting		
Cylch/Nursery School		✓
Sports Club/Activity		✓
After School Club		✓
Local Interest Club	✓	

There is no community centre in the village of Nebo. The residents of Nebo and Nasareth regularly make use of the 'community room' located at Ysgol Nebo to hold community events and occasions. Here are some of the social events and occasions held in the community room at Ysgol Nebo:

- Monthly meetings of the Nebo and Nasareth Area Committee
- Local Clubs (Monday Club, Knitting and Crochet Club, Social Evenings, Gardening Club)
- First Aid with St John Ambulance: Training on CPR and the use of defibrillators at the School and Nasareth Chapel
- Welsh lessons for learners
- Refreshments after local trips and the Craig Goch Mountain Race
- Remembrance Sunday service
- Protecting the environment: Organising litter-picking sessions and taking action to prevent dog fouling

Activities or groups which the schools have regular involvement with are noted in the table below.

	Nebo	Llanllyfni
Ti a Fi Group / Cylch Meithrin		✓
Eisteddfodau (Local/County/National)	✓	✓
Adran yr Urdd	✓	
Other activities (sports, clubs)		✓

The assessment shows that some negative impact on the community is anticipated should the option to close Ysgol Nebo be implemented. It is acknowledged that closing Ysgol Nebo would lead to the loss of a school in the Nebo community; however, the assessment notes that a large proportion of children living within the school's catchment area already attend other schools (78%), including Ysgol Llanllyfni (44%), and therefore it is concluded that a link between Ysgol Llanllyfni and the Ysgol Nebo community already exists.

If the proposed closure of Ysgol Nebo were to be implemented, every effort would be made to mitigate the impact on the community by encouraging links between the communities and Ysgol Llanllyfni. To mitigate the impact on the community, opportunities are identified to ensure that the Nebo community is aware of the activity of the alternative school, and community collaboration between Ysgol Llanllyfni and the Nebo community is encouraged, where appropriate.

If the proposal to close Ysgol Nebo were implemented, it would be essential as part of the process to encourage discussions between the alternative school (Ysgol Llanllyfni) and the parents of Ysgol Nebo learners, so that parents and learners can benefit from its facilities and any after-school activities.

In addition, if the Cabinet were to decide to proceed with the proposed closure of Ysgol Nebo, options for the future use of the school building would need to be considered, taking into account the community activities currently held in the school building.

## 7.10 The Welsh Language

Our expectation is that the county's primary schools support and enhance the use of the Welsh language as both a social language and the language of education for their learners.

When developing any proposals regarding schools' reorganisation, full consideration must be given to the impact on the Welsh language. Sustaining and improving the use of the Welsh language as both a social language and the language of education is always a key consideration when drawing up proposals and when assessing options.

An assessment was completed of the linguistic impact of the proposal to close Ysgol Nebo and educating the learners at Ysgol Llanllyfni. A copy of the assessment report can be viewed on the Council's website [www.gwynedd.llyw.cymru/modernisingeducation](http://www.gwynedd.llyw.cymru/modernisingeducation). The impact assessment will be reviewed and updated following the statutory consultation.

This assessment concluded that no negative impact on the Welsh language is anticipated, should the proposal be realised. This is specifically due to the fact that the alternative school offers a Welsh-medium education (Welsh-Medium, Category 3), as currently offered at Ysgol Nebo. The Language Policy is the same for all Gwynedd primary schools, therefore, the provision would be the same, regardless of which school learners choose to attend.

In addition, the learners would be educated at a school where a higher percentage of learners speak Welsh at home (PLASC January 2025 statistics show that 50% of Ysgol Nebo learners speak Welsh fluently at home, compared with 80% of Ysgol Llanllyfni learners who speak Welsh fluently at home).

Based on the above, should the proposal be implemented, it is predicted that there would be more opportunities for Nebo catchment area learners to use Welsh informally with their peers both inside and outside the classroom, and that the vitality of the Welsh language and its informal use would be stronger.

In accordance with the Language Policy, the medium of curricular provision is expected to be the same across our primary schools. The Welsh Language Charter was developed by the Council – which is operational in every primary school in Gwynedd – in order to encourage children’s social use of the Welsh language, promote the Welsh ethos of our schools, and raise children’s awareness of Welsh Culture.

Any discussions regarding reorganisation needs to note the Welsh Government's aim of a million Welsh speakers by 2050.

*The extent to which the proposal would support the targets in the approved Welsh in Education Strategic Plan - Welsh in Education Strategic Plan (WESP) 2022-32*

The Welsh in Education Strategic Plan is a statutory document of the Local Authority and aligns with the Welsh Government’s priorities for developing Welsh-medium education (in accordance with the Welsh 2050 targets).

Ysgol Nebo and Ysgol Llanllyfni operate the objectives of Cyngor Gwynedd’s Welsh in Education Strategic Plan 2022-2032 (WESP). This includes:

- That all learners in the county have appropriate language skills in Welsh and English, and that this expectation is consistent across all schools.
- That there is appropriate provision to enable every learner to develop bilingual proficiency. In this context, schools are expected to continue nurturing the skills of those learners who are Welsh speakers, and to introduce Welsh to those who are learners.
- That all educational institutions in the county reflect and reinforce the Language Policy in their administration, social life, and routine management, as well as in their curriculum provision.

As a result, if the proposal to close Ysgol Nebo and transfer learners to Ysgol Llanllyfni is implemented, learners would continue to be taught in a Welsh-medium school, Category 3, which operates the objectives and supports the targets of the WESP.

On the basis of the above, it is not anticipated that implementing the proposal would have a negative impact on the achievement of Outcomes 1, 2, 3, 5, and 6 of the Cyngor Gwynedd Welsh in Education Strategic Plan 2022-2032, namely:

**Outcome 1:** More nursery/3-year-old children receiving Welsh-medium education.

**Outcome 2:** More reception/5-year-old children receiving Welsh-medium education.

**Outcome 3:** More children continuing to improve their Welsh skills when transferring from one stage of their statutory education to another.

**Outcome 5:** More opportunities for learners to use Welsh in different contexts within the school.

**Outcome 6:** Increase in Welsh-medium education provision for learners with additional learning needs (ALN) (in accordance with the duties set out by the Additional Learning Needs and Education Tribunal (Wales) Act 2018).

In addition, since Ysgol Llanllyfni, like Ysgol Nebo, is a Welsh-medium school (Category 3), the proposal would ensure that Welsh-medium provision continues in the area.

As a result, it is concluded that implementing the proposal would align with the objectives of the Welsh in Education Strategic Plan 2022-32, and the targets approved in the Welsh Strategic Plan.

How the proposal would expand or reduce Welsh-language provision, and in cases where it would reduce provision, explain why the provision would be reduced?

The proposal would mean that a Welsh-medium school, Category 3 (Ysgol Nebo), would close. However, if the proposal is implemented, learners would be offered a place in an alternative school, which is also a Welsh-medium, Category 3 school, namely Ysgol Llanllyfni. Ysgol Llanllyfni has enough capacity for learners from both schools.

#### Gwynedd Language Strategy 2023-2033

The Welsh Language Standards set by Cyngor Gwynedd under the Welsh Language (Wales) Measure 2011 place an expectation on the Council to create a 5-year strategy that will show how it intends to promote the Welsh language and facilitate its use across the county. The Gwynedd Language Strategy 2023-2033 is the latest strategy from Cyngor Gwynedd for the Welsh language. This document outlines specific targets for increasing the number of people who speak the language:

	<b>How will we increase the number of speakers?</b>	<b>How will we measure at a local level, and during the period of the strategy?</b>
1.	Providing opportunities for children and young people who are not yet Welsh speakers (e.g. new arrivals, children who do not receive mainstream education) to learn and become confident Welsh speakers.	The number of children receiving Welsh-medium education. The number of children receiving support through the Education Department's immersion system.
2.	Providing opportunities for adults to become new speakers through the Council's learner support schemes and community provision from partners.	The number of Council employees receiving Welsh language lessons. Provision of community Welsh language courses.

The Strategy also includes a commitment to increasing the use of Welsh in specific areas of action. A summary of the expected impact on the Strategy's areas of action is outlined below, should the proposal be implemented:

#### **Early years language:**

As a Cylch Meithrin is located on the site of Ysgol Llanllyfni (the alternative school), it is anticipated that the proposal would have a positive effect on early years language.

#### **Learning Language:**

Ysgol Nebo is a Welsh-medium school, Category 3. As Ysgol Llanllyfni is also a Welsh-medium school (Category 3), it is concluded that the proposal would not have an effect on the language of the children's education.

#### **Work and Service Language:**

It is acknowledged that, if the proposal is implemented, there would be some negative impact on the language due to the loss of a Category 3 Welsh-medium school presence in the village of Nebo serving the area, and it would lead to redundancies among school staff/workforce.

However, it is noted that the alternative school (Ysgol Llanllyfni) that would serve the Nebo area if the proposal were implemented is also a Welsh-medium school (Category 3). It is not anticipated that the proposal would affect the language of work and service provided at the alternative school.

### **Community Language:**

If the proposal to close Ysgol Nebo were to be implemented, it is anticipated that certain elements of community events would be affected. It is foreseen that there may be some negative impact resulting from the implementation of the proposal, for example, as parents/guardians/families will no longer meet daily in the Nebo community when dropping off/picking up children from the school.

Since there is no community building/center in the village of Nebo, the residents of Nebo and Nasareth regularly make use of the school's 'community room' for community occasions and events, including Welsh lessons for learners. If the proposal to close Ysgol Nebo were to be implemented, it is anticipated that certain elements of community events would be affected.

To mitigate any negative effects, the Local Authority and the Ysgol Llanllyfni Governing Body could consider ways to promote the use of the Welsh language by including the Nebo community in the school's community activities. In addition, if the proposal is implemented, the Authority will have to consider options for the future use of the school building, taking into account the community activities currently held at the school

## **7.11 Geographical Factors**

### **7.11.1. *Proposed Travel and Transportation Arrangements***

The Cyngor Gwynedd strategy for primary education aims to restrict travel from home to school to a one-way journey of no more than 30 minutes. Free transportation is available for primary school learners who live 2 miles or more from the school in their catchment area.

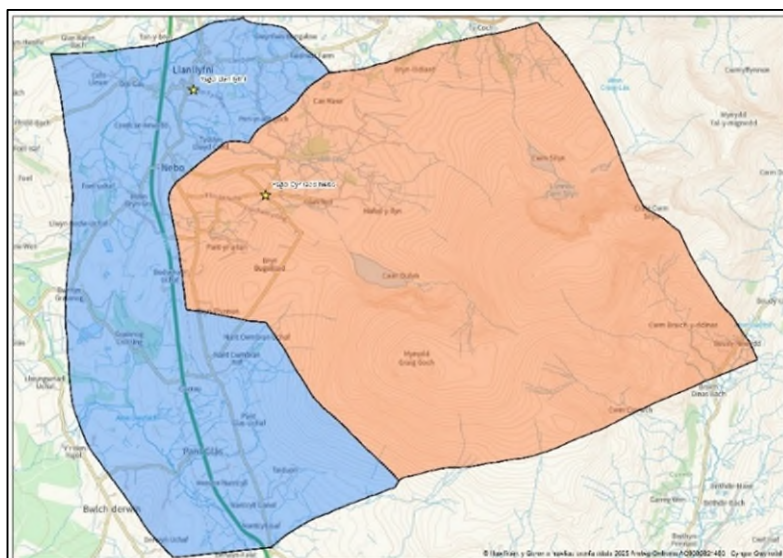
By moving to the alternative school, it is not anticipated that any learner will need to travel an unreasonable distance to reach an educational site, in accordance with the strategy. Ysgol Nebo is located 1.6 miles from the Ysgol Llanllyfni site, and it is anticipated that the journey would take approximately 5 minutes each way in a car or on a bus. Transport would be provided in accordance with the County's School Transport Policy, and the costs of providing transport for the current learners of Ysgol Nebo to Ysgol Llanllyfni would be approximately £17,000 per year.

### **7.11.2. *School Admissions Catchment Areas***

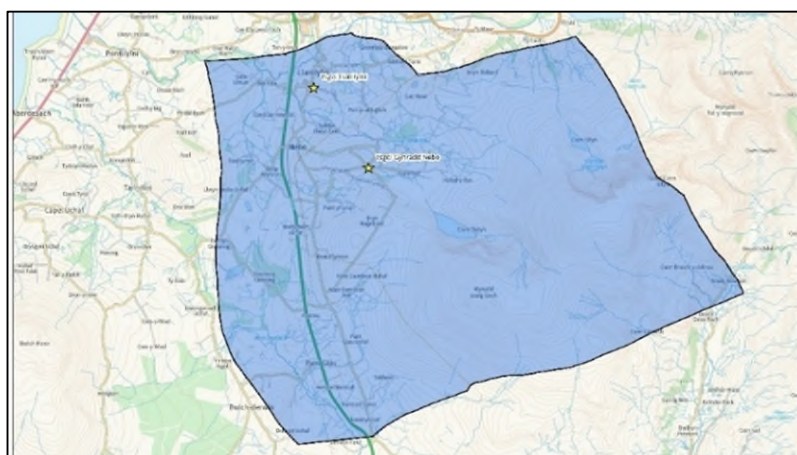
As a result of the proposal, Ysgol Llanllyfni's catchment would include its own existing catchment area and the catchment area of Ysgol Nebo.



**Map 1: The current catchment areas of Ysgol Nebo and Ysgol Llanllyfni**



**Map 2: Ysgol Llanllyfni catchment area if the proposal is implemented**



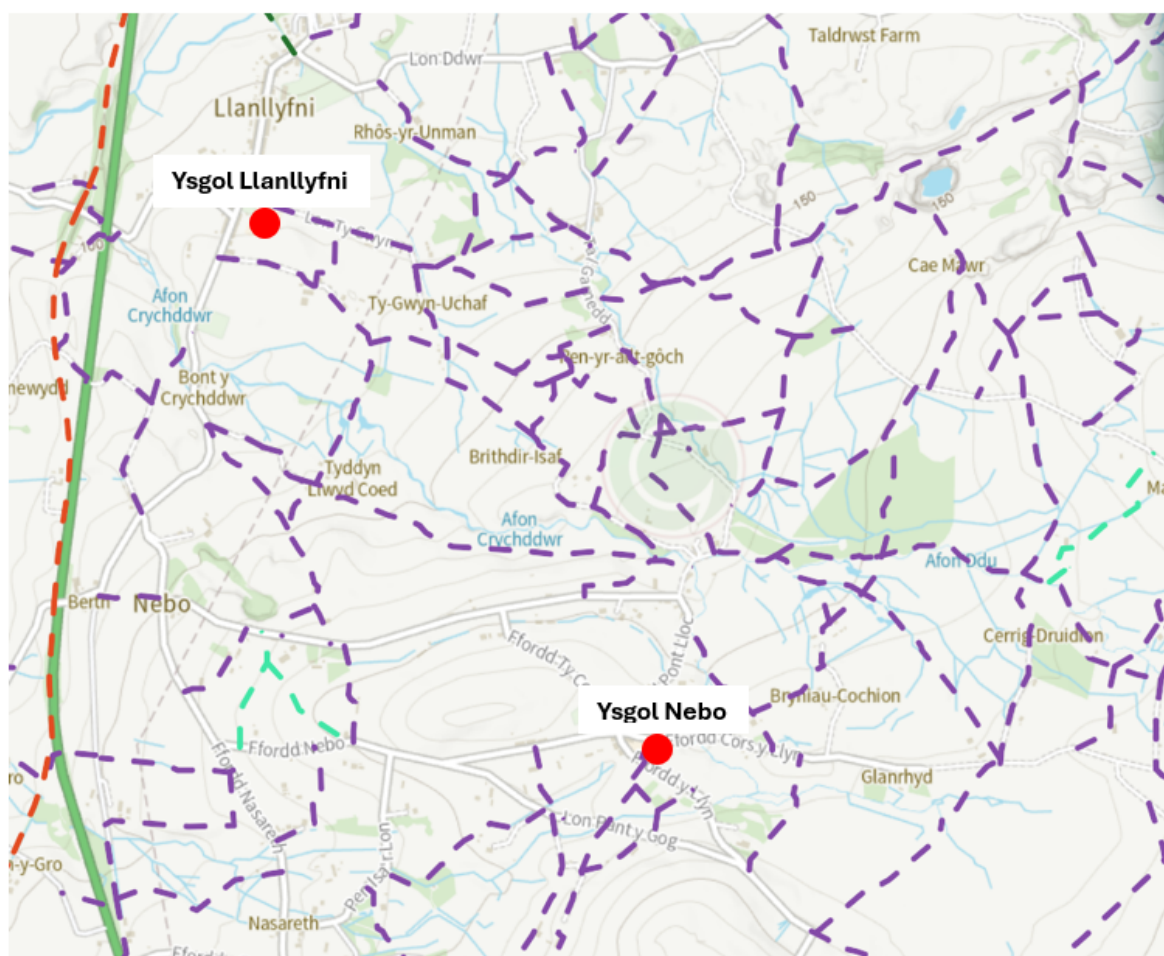
### 7.11.3. Proposed Admissions Arrangements

Cyngor Gwynedd's Education Authority would be the Admissions Authority, and admission to the school would be in accordance with Cyngor Gwynedd's Schools Admissions Policy. The Authority would manage admissions to the school.



#### 7.11.4. Footpaths

Public footpaths near Ysgol Llanllyfni are noted in the following map:



### 7.12 Impact on equality

An assessment of the impact on the people of Gwynedd was carried out on the proposal. The assessment gives specific attention to various equality elements such as race, gender, disability, language, religion or belief and age. The assessment notes the current situation and the policies and arrangements which are in place to ensure that the proposal considers and is in accordance with equal rights.

Having weighed up the relevant factors, it is concluded that the proposal is not likely to have a negative impact on equality features. It is noted that measures are already in place to ensure that there will be no illegal discrimination or harassment.

It is anticipated that the implementation of the proposed proposal would reduce the inequality in the case of socio-economic disadvantage by ensuring that the learners have more experiences and access to more services and activities in the alternative school. Learners would receive more equal opportunities as the learners would receive learning experiences based on national learning principles, with a variety of styles including working in mass groups, smaller groups, partner work and individually within their specific age range together with lessons that are appropriately differentiated for the age range in question.

By implementing the proposal, the learners of Ysgol Nebo would benefit from having more age-related peers in a school with more learners, which will ensure suitable educational and extracurricular experiences for them together with access to more extracurricular activities.

The Council will follow its usual procedures through supporting and monitoring, to ensure the compliance of every school with equality characteristics. Estyn also inspects schools and assesses equality aspects as a part of its usual guidelines.

A full assessment report '*Assessment of the impact on the people of Gwynedd*' is available to view on [www.gwynedd.llyw.cymru/YsgolNeboConsultation](http://www.gwynedd.llyw.cymru/YsgolNeboConsultation)

## 7.13 The Well-being of Future Generations Act

The Education Department has a role in promoting the well-being objectives of the Act amongst learners in the county through its activities and projects. The Act sets a duty on public bodies in Wales to improve economic, social, environmental and cultural well-being. As part of the duty, the Council has published well-being objectives that outline the way it will improve well-being in the "2023-28 Gwynedd Plan".

Following consideration and assessment in accordance with the requirements of the well-being act, it is concluded that the proposal meets the 7 well-being goals of the Act, together with the Council's well-being objectives. This proposal will allow us to respond to and meet the needs of the children today and strengthen their well-being for the future.

It is acknowledged that, should the Cabinet decide to proceed with the proposal, the proposal would lead to the loss of a school in the Nebo community. However, a large proportion of the children who live within the school's catchment area already attend other schools, including Ysgol Llanllyfni, and therefore it is concluded that a link between the schools and the community of that school already exists. Every effort will be made to mitigate the impact on the community by encouraging links between the communities and Ysgol Llanllyfni, should the proposal be implemented. Should the proposal be approved, discussions will be held to discuss the possibility that Ysgol Llanllyfni's community activity includes the community where appropriate.

The proposal will ensure that the children of the area are educated in a suitable environment and within a natural Welsh community, thus increasing opportunities to socialise and collaborate with others, and to give them an equal opportunity to thrive among their peers.

A full assessment report is available to view on [www.gwynedd.llyw.cymru/YsgolNeboConsultation](http://www.gwynedd.llyw.cymru/YsgolNeboConsultation)

## 7.14 Information about Additional Learning Needs

The Ysgol Llanllyfni building has facilities equivalent to those at Ysgol Nebo, in offering a specialist provision which is suitable for learners with additional learning needs. The needs of any vulnerable groups including children with Additional Learning Needs would be assessed and implemented in line with the Authority's policies and procedures.

## 7.15 Future use of the site

If the proposal is implemented, Ysgol Nebo would cease to offer an educational provision. Cyngor Gwynedd has a policy on the future use of school buildings and the policy would be followed. Cyngor Gwynedd would need to discuss and consider any binding legal terms or restrictions which could come into force if any sites cease to provide educational provision.

## 7.16 Potential Risks

Risk	Possible impact	Steps to Mitigate the Risk
Lack of decision-making	An inability to put change into practice due to a lack of decision-making which increases the likelihood of disturbing the learners' education. It could harm the Council's reputation.	A timetable with clear milestones which notes when key decisions are needed from the Cabinet Member for Education and the Cabinet.
Insufficient transportation for the new arrangements	Children unable to be admitted to the alternative school	Prepare a timetable with clear milestones for planning and tendering the transportation far in advance of the learner transfer day
The quality of the education in the short-term whilst the school's situation is under review	Reduced quality of education for the learners	Monitoring the schools in accordance with the Education Department's policy.

## 7.17 Expected Advantages and Disadvantages of the Proposal

The advantages and disadvantages identified for the proposal are outlined in the table below:

Considerations	Advantages	Disadvantages
<b>Class Sizes</b>	Learners to be educated in more suitably sized classes.  Learners to mix daily and be educated with other children of the same age.	
<b>Learner Numbers</b>	Numbers at the alternative school providing education for the area will be more robust and sustainable in the future.  A smaller proportion of surplus places in the catchment area.	
<b>Leadership and Staffing</b>	The number of learners at the alternative school enables the Headteacher to be able to lead and manage the school.	Impact on staff employment
<b>The Community</b>		The village of Nebo loses a school.
<b>Financial Resources</b>	The school will not require a minimum staffing protection contribution. Reduces the educational cost per learner.	Transportation costs for the Authority as the alternative school is more than 2 miles from the learners' homes.
<b>The Welsh Language</b>	Welsh-medium, Category 3 education is offered as per the current situation.	

Considerations	Advantages	Disadvantages
<b>Geographical Factors</b>	No learner in the area will need to travel an unreasonable distance to the school.	Some of the learners will need to travel further than they currently do.
<b>Other considerations</b>	Quality of education. The school's benefits and resources. Offer experiences for learners to socialise and collaborate with peers.	

## 8. A Summary of the Proposal

This proposal means that Ysgol Nebo would close, and learners would transfer to Ysgol Llanllyfni.

Close Ysgol Nebo on 31 December 2026 and offer learners a place at Ysgol Llanllyfni from 1 January 2027 onwards.

## 9. An Explanation of the Statutory Process and Consultation Details

At its meeting on 14 October 2025, Cyngor Gwynedd's Cabinet agreed to *"hold a statutory consultation, in accordance with the requirements of section 48 of the School Standards and Organisation (Wales) Act 2013, on the proposed proposal to close Ysgol Nebo on 31 December 2026 and to provide a place for learners at Ysgol Llanllyfni from 1 January 2027 onwards"*

The Cabinet approved the recommendation to proceed to a statutory consultation period on the preferred option. This is the consultation document that includes the details of the proposal. This document was published on **5 December 2025** and responses can be received until **13:00 on Friday, 23 January 2026**. **These responses will not be dealt with as objections, but rather as comments.** If anyone wishes to object, they must do so following the publication of the statutory notice (should one be published). During this consultation, the responses can include comments or questions on any aspect of the proposal, the alternative options noted, and/or suggest other options.

Following this statutory consultation period, a report will be submitted to the Cabinet in March 2026, where a decision will be made as to whether or not to proceed with this proposal. This consultation report will summarise the issues raised by the consultees and will include the Council's responses to those issues. The report will be published on the Council's website and hard copies will be available upon request. The parents, carers and guardians, staff and governors of the school will be informed that the report is available. A number of representatives from other agencies will be informed that the consultation report is available, e.g. Estyn, Welsh Ministers, relevant Assembly Members and Members of Parliament, etc.

If the Cabinet decides to proceed after considering the consultation report, the proposal must be published in the form of a statutory notice. The notice will be published on a school day and an **"objection period"** of 28 days will commence from the publication date of the proposal. Anyone may object to the proposal. The notice will be published on Cyngor Gwynedd's website and also close to the main reception in each of the two schools involved with the proposal; copies will be sent to the schools for distribution to the learners,

parents, carers and guardians, staff and governors. Hard copies will be available upon request from the Modernisation Education office.

Following the end of the objection period, the Council will publish a summary of the statutory objections and the Council's response to the objections in an "objections report". The objections report will be published on the Council's website and hard copies will be available upon request. The parents, carers and guardians, staff and governors of the school will also be informed that the objections report is available. In addition, a number of representatives from other agencies will be informed that the objections report is available.

Cyngor Gwynedd's Cabinet will make the final decision on the proposal within 16 weeks of the end of the objection period. When the Cabinet has made its final decision, the decision will be put in writing, along with specific reasons for the decision. The decision will be published on the Council's website, and the parents, carers and guardians, staff and governors of the two schools will be informed of the decision. A number of representatives from other agencies will be informed of the decision.

In some cases, following the Cabinet's final decision, it is possible for the following bodies to refer the proposal for consideration by Welsh Ministers:

- Another Local Authority affected by the proposal
- The appropriate religious body for any school affected
- The governing body of a voluntary or foundation school subject to the proposals
- Trust holding property on behalf of a voluntary or foundation school subject to the proposals
- A further education institution affected by the proposals

The bodies referring the proposal will have to note why they believe that the decision made by the Local Authority is incorrect. Welsh Ministers will decide whether the proposals affect the bodies and whether they need to consider the proposals.

## 10. Proposed Outline Timetable

Date	Step
<b>14 October 2025</b>	<b>Cabinet's Report (Proposal Paper):</b> seeking permission to carry out a statutory consultation
<b>5 December 2025</b>	<b>Statutory consultation period commences:</b> A minimum of 42 days to be allowed for consultees to respond, with a minimum of 20 of those days to be school days.
<b>23 January 2026</b>	<b>Closing date of the statutory consultation:</b> The closing date for receiving comments on the proposal
<b>March 2026</b>	<b>Cabinet:</b> Following the statutory consultation, a report on the responses will be submitted to the Cabinet. The Cabinet will discuss the report and decide whether or not to proceed with the proposal. This report will be published on the Council's website.
<b>May 2026</b>	<b>Publication of statutory notice:</b> If the Council decides to proceed with the proposal, a statutory notice will be published, and an objection period will be held. Any objection must be submitted within the 28-day objection period.
<b>September 2026</b>	<b>Cabinet:</b> Following the objection period, the Cabinet will discuss the objections report and decide whether or not to confirm the proposal.
<b>October 2026</b>	<b>Referring the decision to the Welsh Ministers:</b> In accordance with section 54 of the 2013 Act, within 28 days of the Cabinet's decision, the following bodies have the right to refer the Authority's decision to Welsh Ministers for consideration: <ul style="list-style-type: none"> <li>i. Another local authority affected by the proposals.</li> <li>ii. The appropriate religious body for any school affected.</li> <li>iii. The governing body of a voluntary or foundation school subject to the proposals.</li> <li>iv. A trust holding property on behalf of a voluntary or foundation school subject to the proposals; and</li> <li>v. A further education institution affected by the proposals.</li> </ul>
<b>31 December 2026</b>	<b>Implementation of the proposal:</b> Ysgol Nebo officially closes, subject to the Cabinet's decisions.

## Appendix 1 – Response Form

### Response Form - Statutory Consultation on the Proposal to Close Ysgol Nebo



Cyngor Gwynedd is consulting on a proposal to close Ysgol Nebo. The proposal is: *"To close Ysgol Nebo on 31 December 2026 and provide a place for learners at Ysgol Llanllyfni from 1 January 2027 onwards."*

The statutory consultation document and the related impact assessments are available on Cyngor Gwynedd's website: [www.gwynedd.llyw.cymru/YsgolNeboConsultation](http://www.gwynedd.llyw.cymru/YsgolNeboConsultation)

This response form allows you to submit comments or questions on any aspect of the proposal, the alternative options identified, and/or suggest other options.

**Please note that responses to the consultation will not be counted as objections to the proposal. There will be an opportunity to object to the proposal if a statutory notice is issued. Objections can only be registered following the publication of a statutory notice.**

The response form can also be completed [online](http://www.gwynedd.llyw.cymru/YsgolNeboResponseForm).  
[www.gwynedd.llyw.cymru/YsgolNeboResponseForm](http://www.gwynedd.llyw.cymru/YsgolNeboResponseForm)

**In accordance with data protection legislation requirements, we are required to inform you of the following:**  
Cyngor Gwynedd is seeking your opinion on this proposal as part of the statutory consultation process. The details you provide will be used solely for this purpose. The information may be shared with agencies involved in the consultation (e.g., Welsh Government), but only for the purpose of responding to specific issues you may have raised in your response. Your personal details will be kept for 7 years.

With your consent, your comments may be published in full (excluding personal details such as names and addresses) on the Cyngor Gwynedd's website as part of a report on the consultation presented to Cyngor Gwynedd's Cabinet. Please indicate below whether you agree for your response to be published by the Council by placing a ✓ in the relevant box:

- ☐ I agree for the Council to publish my response, excluding my personal information.  
☐ I do not agree for the Council to publish my response.

Regardless of the option chosen, we will continue to consider your comments, and your comments will be used to produce a consultation report that will be published on Cyngor Gwynedd's website.

For more information about your rights and details of the Council's Data Protection Officer, please visit the Privacy section on the Council's website.

#### Please return your response to:

**E-mail:** [ModernisingEducation@gwynedd.llyw.cymru](mailto:ModernisingEducation@gwynedd.llyw.cymru) or

**Post:** Modernising Education Office,  
Education Department,  
Cyngor Gwynedd,  
Caernarfon  
LL55 1SH

**Closing date:** 13:00 on Friday, 23 January 2026

#### Consultation Report:

Following the statutory consultation, the Council will publish a Consultation Report. The Consultation Report will summarise the issues raised by consultees and will include the Council's response to those issues.

If you wish to receive a notification when the consultation report is published, please provide your contact details below:

**E-mail address or postal address:** \_\_\_\_\_

## Part 1 – Response to the Consultation

1. (a) I am responding as (please specify below):

☐ Parent / Guardian

☐ Learner

☐ School Governor

☐ Staff

☐ Other: \_\_\_\_\_

(b) From the following school (please specify below)

☐ Ysgol Nebo

☐ Ysgol Llanllyfni

☐ Other: \_\_\_\_\_

2. **Please provide below your comments on the proposal to "close Ysgol Nebo on 31 December 2026 and provide a place for learners at Ysgol Llanllyfni from 1 January 2027 onwards", and/or comments regarding any of the alternative options identified by the Council:**

3. **Are there any other alternative options you would like to suggest which would address the reasons for the proposal to close the school (i.e. the key challenges Ysgol Nebo faces which the Council is seeking to address)? Please note any other alternative options you would like the Council to consider below:**



**4. Are there any issues, or possible effects, that you believe the Council should consider, which have not already been addressed in the impact assessments or other documents in the consultation?** (The impact assessments and other consultation documents can be found on Cyngor Gwynedd's website: [www.gwynedd.llyw.cymru/YsgolNeboConsultation](http://www.gwynedd.llyw.cymru/YsgolNeboConsultation))

**Specifically, is the proposal likely to have more or less impact on certain groups of people with <sup>1</sup>equalities characteristics or those experiencing <sup>2</sup>socio-economic disadvantage?**

## **Part 2 – Impact on the Welsh Language**

In accordance with the Welsh Language Standards, the Authority is required to consider the impact of its policy decisions on the Welsh language.

**5. In your opinion, what impact would the proposal have on opportunities for people to use Welsh, and on ensuring that Welsh is not treated less favourably than English?**

---

<sup>1</sup> *Equality characteristic: A characteristic that is protected under the Equality Act 2010, namely Age, Gender, Race, Sexual Orientation, Religion or Belief, Disability, Gender Reassignment, and Pregnancy and Maternity.*

<sup>2</sup> *Socio-economic disadvantage: This means more than just financial poverty, it can include things such as living far from services, digital disadvantage, etc.*

**6. In your opinion, how could the proposal be shaped or adjusted to ensure it has a positive effect, or a more positive effect, on opportunities for people to use Welsh, and on ensuring Welsh is not treated less favourably than English?**

**7. In your opinion, would it be possible to shape or adjust the proposal to ensure it does not have negative effects, or has less negative effects, on opportunities for people to use Welsh, and on ensuring Welsh is not treated less favourably than English?**