

# Review of the Felinwnda Catchment Area

CONSULTATION DOCUMENT

24 SEPTEMBER – 22 OCTOBER 2024

# Contents

---

1	Introduction.....	2
2	The Consultation Process.....	2
3	Current Felinwnda Catchment Area .....	4
4	Possible options.....	6
5	Summary of statistics of Ysgol Bontnewydd and Ysgol Llandwrog .....	9
6	Impact Assessments.....	9
7	Explaining the Consultation Process and Next Steps .....	13
8	Proposed Outline Timetable .....	13
9	Response Form.....	14

## **Appendix A:** Impact Assessments Package

# 1. Introduction

---

Following the decision to close Ysgol Felinwnda on 31 December 2023, Cyngor Gwynedd is eager to gather the views of stakeholders in the current Ysgol Felinwnda catchment area regarding what school, or schools should serve the catchment area in the future.

This consultation invites comments on the options that are under consideration regarding the future of the current Ysgol Felinwnda catchment area.

This consultation document notes the options that are under consideration, together with the associated background information.

## 2. The consultation process

---

The consultation will be held between **24 September – 22 October 2024**.

Cyngor Gwynedd is consulting with the following consultees:

- All residents of the current Ysgol Felinwnda catchment area,
- The Governing Bodies of Ysgol Llandwrog, Ysgol Bontnewydd, Ysgol Bro Llifon and Ysgol Rhostryfan
- Cylch Meithrin Dinas and Llanwnda
- Llanwnda Community Council
- Local member Llanwnda Ward
- Canolfan Bro Llanwnda, and
- The Church in Wales

**Please note** - Responses are invited from the consultees listed above only. We will not accept responses from individuals who live outside the current Ysgol Felinwnda catchment area.

### **Consultation document and background documents**

This consultation document, and other background papers have been published on Cyngor Gwynedd's website, and hard copies of all the documentation will also be available upon request from the Modernising Education Office by e-mailing [modernisingeducation@gwynedd.llyw.cymru](mailto:modernisingeducation@gwynedd.llyw.cymru) or by telephoning 01286 679247.

The background documents include:

- Impact assessment on Equality characteristics, the Welsh Language, and Socio-economic disadvantage
- Impact Assessment on the Well-being of Future Generations Act
- Community impact assessment
- Assessment of the Impact on Travel Arrangements
- Welsh Language Impact Assessment

### **“Drop-in” session**

During the consultation period, Cyngor Gwynedd officers will hold a “drop-in” session at Canolfan Bro Llanwnda, to give stakeholders an opportunity to ask any questions and to receive clarity on any aspect relevant to the consultation on changing Ysgol Felinwnda's catchment area. This session will take place between 15:30-18:30 on Monday the 7<sup>th</sup> of October 2024.

## How to respond to the consultation?

You can respond to this consultation by completing the online response form:

[www.gwynedd.llyw.cymru/felinwndaresponseform](http://www.gwynedd.llyw.cymru/felinwndaresponseform)

Or by completing the response form attached to the consultation document and returning it to:

**E-mail:** [modernisingeducation@gwynedd.llyw.cymru](mailto:modernisingeducation@gwynedd.llyw.cymru)

**Post:** Modernisation Education Office,  
Cyngor Gwynedd  
Stryd y Jêl  
Caernarfon  
Gwynedd  
LL55 1SH

In addition to submitting comments on the options proposed in **Section 4** below, consultees can suggest alternative options by completing the response form.

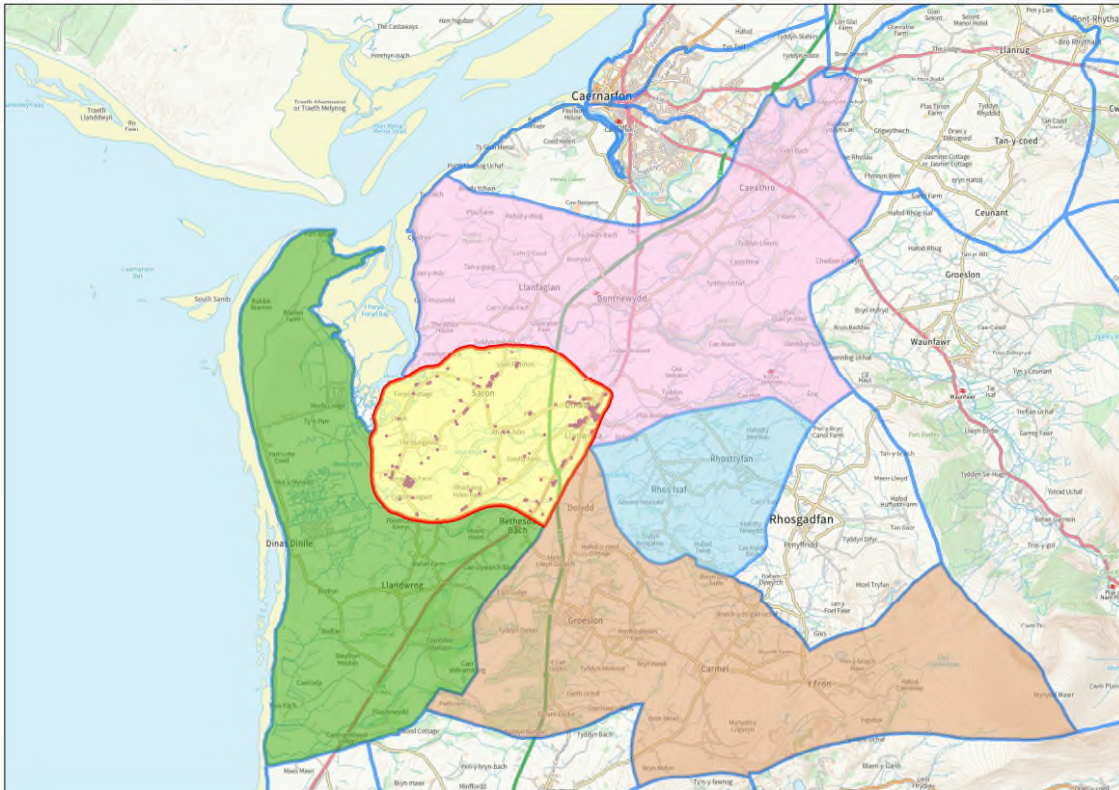
The responses received during the consultation period will be considered by the Cabinet before a decision is made on the catchment area school/schools for future Ysgol Felinwnda catchment area learners.

**Note** – All responses, whether by post or via e-mail, must reach the Council's Headquarters by **13:00 on Tuesday, 22 October 2024**.

### 3. Current Ysgol Felinwnda Catchment Area

The area that is the subject of this consultation is Ysgol Felinwnda's catchment area. This catchment area borders with the catchment areas of the primary schools of Bontnewydd, Llandwrog, Rhostryfan and Bro Llifon and serves Ysgol Syr Hugh Owen secondary school.

The current Ysgol Felinwnda catchment area is shown in yellow on the map below:



#### What is a catchment area?

The *Cyngor Gwynedd Parents Information Handbook* defines a catchment area as follows:

*'Every school has a specific catchment area, namely a defined geographical area that it serves.'*

*The Authority operates a catchment area policy and, normally, pupils attend the school in the catchment area where they live, and where the Authority will have made provisions in terms of space, staffing and other resources including school transport. Parents can make an application for their children to attend any school in the County. The oversubscribed admission criteria is used to prioritise applications.'*

You can find more information in the [Information for Parents Handbook /Gwynedd schools Admissions Policy](#).

### 3.1 Schools that the children of Ysgol Felinwnda catchment area attended.

According to the September 2023 school census, there were 49 primary age learners living in the Ysgol Felinwnda catchment area.

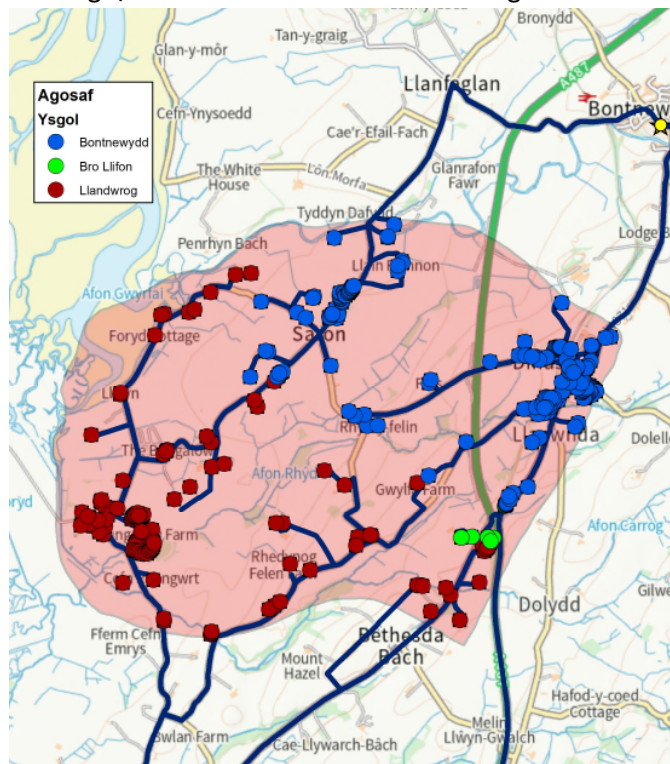
The table below shows the schools learners who live in the Felinwnda catchment area have attended over the last five years.

School	2019	2020	2021	2022	2023
Felinwnda	22%	18%	4%	7%	6%
Llandwrog	16%	12%	10%	10%	13%
Bontnewydd	54%	62%	80%	64%	61%
Maesincla	0	0	0	2%	0
Rhostryfan	1%	2%	0	0	6%
Y Gelli	3%	0%	0%	0%	0%
Yr Hendre	3%	4%	2%	10%	6%
Other	1%	2%	4%	7%	8%

Source: September 2019-2023 Census

### 3.2 The schools nearest to dwellings / households of the Felinwnda catchment area

There are 264 dwellings / households in the Felinwnda catchment area. The map below shows the nearest schools to the Felinwnda catchment area's dwellings / households based on measuring the distance along the roads:



Considering all the schools attended by children in the Felinwnda catchment area, the map above shows that Ysgol Bontnewydd and Ysgol Llandwrog are the schools that are located closest to most dwellings / households in the Felinwnda catchment area, with the largest proportion of addresses in the Felinwnda catchment area closer to Ysgol Bontnewydd.

## 4. Possible options

The Council has identified 3 possible options for the future of the Felinwnda catchment area, that would address the following objectives:

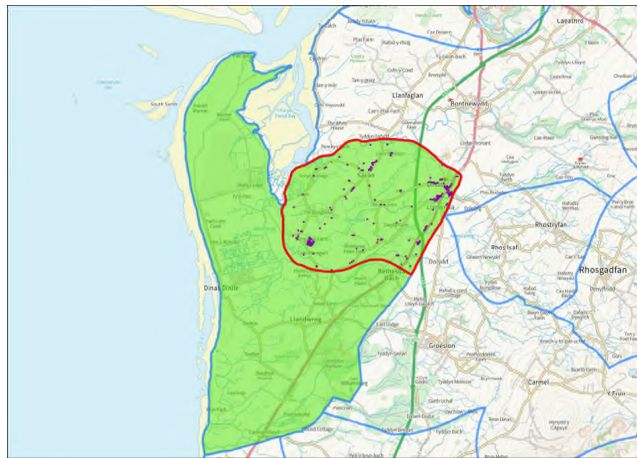
- Ensure a reasonable travel distance.
- Ensure that the current Felinwnda catchment area continues to be within the Ysgol Syr Hugh Owen secondary school catchment area.

**Option 1-** Transfer Felinwnda catchment area in its entirety to the Ysgol Llandwrog catchment area

**Option 2-** Transfer Felinwnda catchment area in its entirety to the Ysgol Bontnewydd catchment area

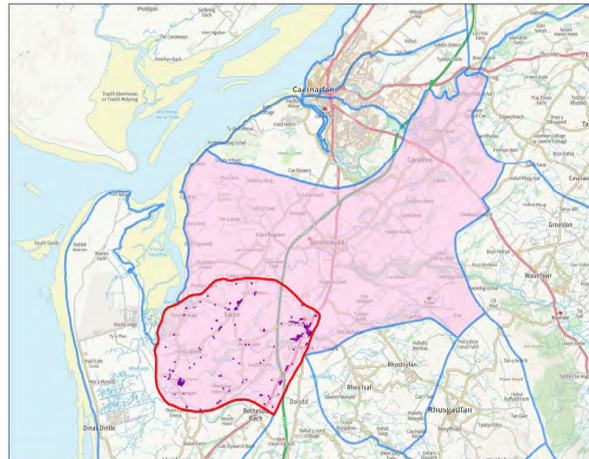
**Option 3-** Dividing the Felinwnda catchment area in accordance with the houses that are geographically closest to Ysgol Llandwrog and Ysgol Bontnewydd.

### **Option 1** – Transfer the Felinwnda catchment area in its entirety to the Ysgol Llandwrog catchment area



- As in the case of Ysgol Felinwnda, Ysgol Syr Hugh Owen is the secondary school catchment area for Ysgol Llandwrog.
- This option would enable all the children from the Felinwnda catchment area to stay together.
- Based on the current preferences of the parents of the Felinwnda catchment area, a number of learners from the Felinwnda catchment area already attend Ysgol Llandwrog (12%), and there is enough capacity at Ysgol Llandwrog to welcome new learners from the Felinwnda catchment area.
- Ysgol Llandwrog is closer to 36% of the houses in the Felinwnda catchment area than any other school.
- A high percentage of Ysgol Llandwrog learners are fluent in Welsh (84%).
- In accordance with the Cyngor Gwynedd transport policy, the authority would need to offer transport to learners who live over two miles from the catchment area school or if it is considered that the pedestrian routes to the school are dangerous. Based on primary age learners currently living in the Felinwnda catchment area, around 45 learners would need to be offered transport at an estimated cost of £85,000 (1 bus from the Dinas/Llanwnda area and 1 bus from the Saron area). This means that there are significant transport costs in transferring the whole of the Felinwnda catchment area to the Ysgol Llandwrog catchment area.
- If this option were to be implemented, full consideration will be given to the needs of learners with Additional Learning Needs and Inclusion including accessibility and transport issues.
- Implementing this option would not result in any change to Ysgol Llandwrog's admission number (Ysgol Llandwrog's admission number is 10).
- With the exception of changing the boundaries of the catchment area, this option does not involve any modification to the admission arrangements of the associated schools. You can find more details about Gwynedd's school admissions arrangements and policies in our handbook [Information for Parents 2024-25](#).

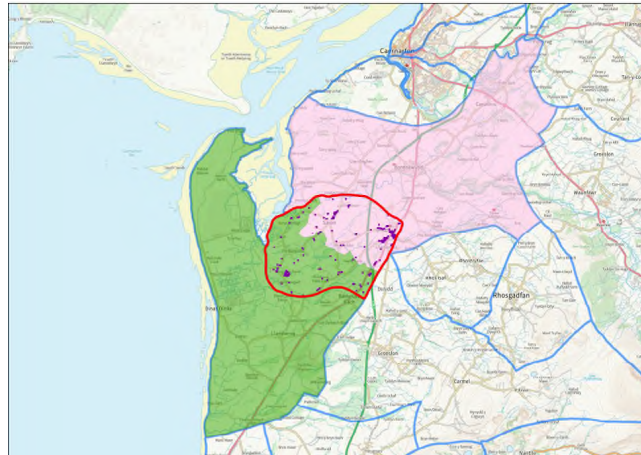
## **Option 2 - Transfer the Felinwnda catchment area in its entirety to the Ysgol Bontnewydd catchment area**



- As in the case of Ysgol Felinwnda, Ysgol Syr Hugh Owen is the secondary school catchment area for Ysgol Bontnewydd.
- This option would enable all the learners from the Felinwnda catchment area to stay together.
- Based on the current preferences of the parents of the Felinwnda catchment area, a number of learners from the Felinwnda catchment area already attend Ysgol Bontnewydd (60%), and there is enough space at Ysgol Bontnewydd to welcome new learners from the Felinwnda catchment area.
- Ysgol Bontnewydd is closer to 62% of the houses in the Felinwnda catchment area than any other school.
- A high percentage of Ysgol Bontnewydd learners are fluent in Welsh (88%).
- In accordance with the Cyngor Gwynedd transport policy, the authority would need to offer transport to learners who live over two miles from the catchment area school or if it is considered that the pedestrian routes to the school are dangerous. Based on primary age learners currently living in the Felinwnda catchment area, and due to the fact that there is a suitable walking route to Ysgol Bontnewydd for parts of the Felinwnda catchment area, around 18 learners would need to be offered transport at an estimated cost of £45,000 (1 bus from the Saron area). This means that there are lower transport costs associated with the transfer of the entire Felinwnda catchment area to Ysgol Bontnewydd.
- If this option were to be implemented, full consideration will be given to the needs of learners with Additional Learning Needs and Inclusion including accessibility and transport issues.
- Implementing this option would not result in any change to Ysgol Bontnewydd's admission number (Ysgol Bontnewydd's admission number is 26).
- With the exception of changing the boundaries of the catchment area, this option does not involve any modification to the admission arrangements of the associated schools. You can find more details about Gwynedd's school admissions arrangements and policies in our handbook [Information for Parents 2024-25](#).



**Option 3 - Dividing the Felinwnda catchment area in accordance with the houses that are geographically closest to Ysgol Llandwrog and Ysgol Bontnewydd.**



- As in the case of Ysgol Felinwnda, Ysgol Syr Hugh Owen is the secondary school catchment area for Ysgol Bontnewydd and Ysgol Llandwrog.
- This option would lead to separating the learners of the Felinwnda catchment area.
- Ysgol Bontnewydd is closer to 62% of the houses in the Felinwnda catchment area than any other school.
- Ysgol Llandwrog is closer to 36% of the houses in the Felinwnda catchment area than any other school.
- Based on the current preferences of the parents of the Felinwnda catchment area, a number of learners from the Felinwnda catchment area already attend Ysgol Llandwrog and Ysgol Bontnewydd, and there is enough capacity at Ysgol Llandwrog and Ysgol Bontnewydd to welcome new learners from the Felinwnda catchment area.
- A high percentage of learners at Ysgol Llandwrog (84%) and Ysgol Bontnewydd (88%) are fluent in Welsh.
- In accordance with the Cyngor Gwynedd transport policy, the authority would need to offer transport to learners who live over two miles from the catchment area school or if it is considered that the pedestrian routes to the school are dangerous. Based on primary age learners currently living in the Felinwnda catchment area, around 18 learners would need to be offered transport at an estimated cost of between £85,000 - £125,000 (1 bus from the Dinas/Llanwnda area and 1 or 2 buses from the Saron area). This means that there are higher transport costs associated with dividing the Felinwnda catchment area according to the location of the houses that are geographically closest to Ysgol Llandwrog and Ysgol Bontnewydd.
- If this option were to be implemented, full consideration will be given to the needs of learners with Additional Learning Needs and Inclusion including accessibility and transport issues.
- Implementing this option would not result in any change to Ysgol Llandwrog's or Ysgol Bontnewydd's admission number (Ysgol Llandwrog's admission number is 10 and Ysgol Bontnewydd's admission number is 26).
- With the exception of changing the boundaries of the catchment area, this option does not involve any modification to the admission arrangements of the associated schools. You can find more details about Gwynedd's school admissions arrangements and policies in our handbook [Information for Parents 2024-25](#).

## 5. Summary of statistics of Ysgol Bontnewydd & Ysgol Llandwrog

School	Capacity		Admissions Number	Numbers (September 2023)		Surplus Places R -Yr 6	Legal Category	Linguistic Category
	N	R -Yr 6		N	R -Yr 6			
Bontnewydd	26	182*	26	28	180	2 (1%)	Community	**3
Llandwrog	10	75	10	8	29	46 (61%)	Voluntary Controlled Status (VC) The Church in Wales	**3

\*It is anticipated that the new Ysgol Bontnewydd building (opening during the academic year of 2026/27) will have a capacity of 210 (Reception to Yr 6) and 30 in nursery.

\*\*A school with a strong Welsh ethos, supporting and enabling the learners to use the Welsh language in all social contexts in and outside the school.

The information in the following table outlines the language background of the learners at Ysgol Bontnewydd and Ysgol Llandwrog:

School	Speak Welsh fluently at home	Does not speak Welsh at home but are fluent in Welsh	Speak Welsh at home but not fluently	Does not speak Welsh at home and not fluent in Welsh	Unable to speak Welsh at all
Bontnewydd	85%	3%	8%	2%	2%
Llandwrog	84%	0	2%	7%	7%
	Fluent Welsh		A little Welsh		No Welsh

Source: Data from Headteachers PLASC January 2024

## 6. Impact Assessments

Cyngor Gwynedd has assessed the impact of the three options on equality characteristics, the Welsh language and socio-economic disadvantage, the well-being of future generations act, the community, travel arrangements and the Welsh language. A summary of the results of these assessments can be seen below, and the full assessments can be seen on Cyngor Gwynedd's website - [www.gwynedd.llyw.cymru/felinwndacatchmentarea](http://www.gwynedd.llyw.cymru/felinwndacatchmentarea)

### 6.1 Assessment of the likely impact on the community

#### Option 1 - Transfer the Felinwnda catchment area in its entirety to the Ysgol Llandwrog catchment area.

The assessment of the likely impact on the community shows that the transfer of the Felinwnda catchment area in its entirety to the Ysgol Llandwrog catchment area is unlikely to have a significant direct impact on the community. The Cylch Meithrin and the Cylch Ti a Fi are located at Canolfan Bro Llanwnda and several other events are also held in the Centre, therefore it is not anticipated that the implementation of Option 1 would have an impact on this. As a significant number of parents of children in the Felinwnda catchment area already choose to send their children to out-of-catchment area schools, it is not anticipated that families with young children would leave the community should the Felinwnda catchment area in its entirety be transferred to the Llandwrog catchment area.

**Option 2 - Transfer the Felinwnda catchment area in its entirety to the Ysgol Bontnewydd catchment area.**

The assessment of the likely impact on the community shows that the transfer of the Felinwnda catchment area in its entirety to the Ysgol Bontnewydd catchment area is unlikely to have a significant direct impact on the community. The Cylch Meithrin and the Cylch Ti a Fi are located at Canolfan Bro Llanwnda and several other events are also held in the Centre, therefore it is not anticipated that the implementation of Option 2 would have an impact on this. As a significant number of parents of children in the Felinwnda catchment area already choose to send their children to Ysgol Bontnewydd, it is not anticipated that families with young children would leave the community should the Felinwnda catchment area in its entirety be transferred to the Bontnewydd catchment area.

**Option 3 - Dividing the Felinwnda catchment area in accordance with the houses that are geographically closest to Ysgol Llandwrog and Ysgol Bontnewydd.**

The assessment of the likely impact on the community shows that dividing the whole Felinwnda catchment area according to the houses that are geographically closer to Ysgol Llandwrog and Ysgol Bontnewydd is unlikely to have a significant direct impact on the community. As a high number of children already attend Ysgol Llandwrog (13%) and Ysgol Bontnewydd (61%), it is not anticipated that families with young children would leave the community should the houses in the Felinwnda catchment area in its entirety be divided according to the nearest geographical school (to Ysgol Llandwrog and Ysgol Bontnewydd). Cylch Meithrin and Cylch Ti a Fi are located at Canolfan Bro Llanwnda and a number of other events are also held at the Centre, so it is not anticipated that the implementation of Option 3 would have an impact on this.

**6.2 Welsh Language Impact Assessment**

**Option 1 - Transfer the Felinwnda catchment area in its entirety to the Ysgol Llandwrog catchment area.**

The assessment of the likely impact on the Welsh language shows that the transfer of the Felinwnda catchment area in its entirety to the Ysgol Llandwrog catchment area is unlikely to have a negative impact on the language used by learners in formal contexts in school as Ysgol Llandwrog follows the Gwynedd Education Language Policy. It is anticipated that there would be a positive impact on the informal language used, as 90% of Ysgol Llandwrog learners come from Welsh-speaking homes. Likewise, as in every primary school in Gwynedd (except one), Ysgol Llandwrog is a Category 3 Welsh medium school.

**Option 2 - Transfer the Felinwnda catchment area in its entirety to the Ysgol Bontnewydd catchment area.**

The assessment of the likely impact on the Welsh language shows that the transfer of the Felinwnda catchment area in its entirety to the Ysgol Bontnewydd catchment area, is unlikely to have a negative impact on the language used by learners in formal contexts in school as Ysgol Bontnewydd follows the Gwynedd Education Language Policy. A positive impact is anticipated on the informal language used, as 92% of Ysgol Bontnewydd pupils come from Welsh-speaking homes. Likewise, as in every primary school in Gwynedd (except one), Ysgol Bontnewydd is a Category 3 Welsh medium school.

**Option 3 - Dividing the Felinwnda catchment area in accordance with the houses that are geographically closest to Ysgol Llandwrog and Ysgol Bontnewydd.**

The assessment of the likely impact on the Welsh language shows that the option to divide the houses in the Felinwnda catchment area according to the nearest school geographically to Ysgol Llandwrog and Ysgol Bontnewydd, is unlikely to have a negative impact on the language used by learners in formal contexts in school as Ysgol Llandwrog and Ysgol Bontnewydd follow the 'Gwynedd Education Language Policy'. It is anticipated that there would be a positive impact on the informal language used, as 90% of Ysgol Llandwrog learners and 92% of Ysgol Bontnewydd learners come from Welsh-speaking homes. Likewise, as in every primary school in Gwynedd (except one), Ysgol Llandwrog and Ysgol Bontnewydd are Category 3 Welsh medium schools.

**6.3 Assessment of the impact on transport arrangements**

**Option 1 - Transfer the Felinwnda catchment area in its entirety to the Ysgol Llandwrog catchment area.**

In accordance with the Cyngor Gwynedd transport policy, the authority would need to offer transport to children who live over two miles from the catchment area school or if it is considered that the pedestrian routes to the school are dangerous. Based on primary age children currently living in the Felinwnda catchment area, should the Felinwnda

catchment area in its entirety transfer to the Llandwrog catchment area, then around 45 children would need to be offered transport at an estimated cost of £85,000 (1 bus from the Dinas/Llanwnda area and 1 bus from the Saron area). This means that there are higher transport costs in transferring the Felinwnda catchment area in its entirety to the Ysgol Llandwrog catchment area.

**Option 2 - Transfer the Felinwnda catchment area in its entirety to the Ysgol Bontnewydd catchment area.**

In accordance with the Cyngor Gwynedd transport policy, the authority would need to offer transport to children who live over 2 miles from the catchment area school or if it is considered that the pedestrian routes to the school are dangerous. Based on primary age children currently living in the Felinwnda catchment area, should the Felinwnda catchment area in its entirety transfer to the Bontnewydd catchment area, then around 18 children would need to be offered transport at an estimated cost of £45,000 (1 bus from the Saron area). This means that there are lower transport costs with the transfer of the Felinwnda catchment area in its entirety to the Ysgol Bontnewydd catchment area.

**Option 3 - Dividing the Felinwnda catchment area in accordance with the houses that are geographically closest to Ysgol Llandwrog and Ysgol Bontnewydd.**

In accordance with the Cyngor Gwynedd transport policy, the authority would need to offer transport to children who live over two miles from the catchment area school or if it is considered that the pedestrian routes to the school are dangerous. Based on primary age children currently living in the Felinwnda catchment area, should the Felinwnda catchment area be divided according to the houses that are geographically closer to Ysgol Llandwrog and Ysgol Bontnewydd, then around 18 children would need to be offered transport to Ysgol Bontnewydd and 28 children to Ysgol Llandwrog at an estimated cost of £85,000 - £125,000 (1 bus from the Dinas/Llanwnda area and 1 or 2 buses from the Saron area). This means that there are higher transport costs with dividing the Felinwnda catchment area according to the location of the houses that are geographically closest to Ysgol Llandwrog and Ysgol Bontnewydd.

**6.4 Impact assessment on Equality Characteristics, the Welsh Language, and the Socio-Economic Disadvantage**

**Option 1 - Transfer the Felinwnda catchment area in its entirety to the Ysgol Llandwrog catchment area.**

All Gwynedd schools have relevant policies in place to protect individuals from any discrimination based on race, such as Equality, Inclusion and Anti-Bullying Policies. The transfer of the Felinwnda catchment area to be part of the Ysgol Llandwrog catchment area would improve community regeneration by encouraging collaboration with local communities. The change would encourage collaboration with wider communities, and this may create valuable connections between communities, enabling opportunities and social inclusion. Full consideration will be given to the needs of learners with Additional Learning Needs and Inclusion including accessibility and transport issues. As a result, it is not anticipated that this option will have a negative impact on these characteristics.

**Option 2 - Transfer the Felinwnda catchment area in its entirety to the Ysgol Bontnewydd catchment area.**

All Gwynedd schools have relevant policies in place to protect individuals from any discrimination based on race, such as Equality, Inclusion and Anti-Bullying Policies. The transfer of the Felinwnda catchment area to be part of the Ysgol Bontnewydd catchment area would improve community regeneration by encouraging collaboration with local communities. The change would encourage collaboration with wider communities, and this may create valuable connections between communities, enabling opportunities and social inclusion. Full consideration will be given to the needs of learners with Additional Learning Needs and Inclusion including accessibility and transport issues. As a result, it is not anticipated that this option will have a negative impact on these characteristics.

**Option 3 - Dividing the Felinwnda catchment area in accordance with the houses that are geographically closest to Ysgol Llandwrog and Ysgol Bontnewydd.**

All Gwynedd schools have relevant policies in place to protect individuals from any discrimination based on race, such as Equality, Inclusion and Anti-Bullying Policies. The transfer of the Felinwnda catchment area to be part of the Ysgol Llandwrog or Ysgol Bontnewydd catchment area would improve community regeneration by encouraging collaboration with local communities. The change would encourage collaboration with wider communities, and this may create valuable connections between communities, enabling opportunities and social inclusion. Full consideration will be given

to the needs of learners with Additional Learning Needs and Inclusion including accessibility and transport issues. As a result, it is not anticipated that this option will have a negative impact on these characteristics.

## **6.5 Impact Assessment on the Well-being of Future Generations Act**

### **Option 1 - Transfer the Felinwnda catchment area in its entirety to the Ysgol Llandwrog catchment area.**

The Well-being and Future Generations Act Impact Assessment shows that no negative impacts are anticipated as a result of transferring the Felinwnda catchment area in its entirety to the Ysgol Llandwrog catchment area as a number of the learners who live in the Felinwnda catchment area already attend Ysgol Llandwrog, collaboration with the community and school is an integral part of delivering the objectives for the well-being of the children in the catchment area.

### **Option 2 - Transfer the Felinwnda catchment area in its entirety to the Ysgol Bontnewydd catchment area.**

The Well-being and Future Generations Act Impact Assessment shows that no negative impacts are anticipated as a result of transferring the Felinwnda catchment area in its entirety to the Ysgol Bontnewydd catchment area as a number of the learners who live in the Felinwnda catchment area already attend Ysgol Bontnewydd, collaboration with the community and school is an integral part of delivering the objectives for the well-being of the children in the catchment area.

### **Option 3 - Dividing the Felinwnda catchment area in accordance with the houses that are geographically closest to Ysgol Llandwrog and Ysgol Bontnewydd.**

The Well-being and Future Generations Act Impact Assessment shows that no negative impacts are anticipated as a result of dividing the Felinwnda catchment area according to the houses that are geographically closer to Ysgol Llandwrog and Ysgol Bontnewydd. Collaboration with the community and the schools is an integral part of delivering the objectives for the well-being of the children in the catchment area.

## 7. Explaining the Consultation Process and Next Steps

---

At its meeting on 7 November 2023, Cyngor Gwynedd's Cabinet decided to support a recommendation to hold a consultation on options for the future of Ysgol Felinwnda's catchment area. This is the consultation document that details the options in question.

This consultation document was published on the Council's website on 24 September 2024, and the Authority will receive responses until 13:00 on Tuesday 22 October 2024.

Responses may include comments or questions on any aspect of the options in question or suggest other options.

Following the consultation period, a consultation report will be presented to the Cabinet for them to consider the any responses received before a decision is made on the future arrangements for the catchment area. The consultation report will summarise the issues raised by the consultees and include the Council's response to those issues.

Any decisions made regarding the future of the Ysgol Felinwnda catchment area will be published in writing on the Council's website [www.gwynedd.llyw.cymru/felinwndacatchmentarea](http://www.gwynedd.llyw.cymru/felinwndacatchmentarea)

## 8. Proposed Outline Timetable

---

Date	Step
24 September 2024	Consultation period commences
7 October 2024	"Drop in" Session
22 October 2024	Closing date of the consultation
November 2024	Cabinet: Following the consultation, a report on the responses will be submitted to the Cabinet. The Cabinet will discuss the report and decide on the way forward.
December 2024	Date the decision will come into force

# Response form

<b>Your details</b>	<b>Date:</b> <input type="text"/>						
<b>Name</b>							
<b>Address</b>							
<b>E-mail address</b>							
<b>I am responding as / on behalf of</b> <i>(Please circle the relevant response)</i>	Felinwnda Catchment Residents	Governing Body	Local Member	Llanwnda Community Council	Cylch Meithrin Dinas and Llanwnda	Canolfan Bro Llanwnda	The Church in Wales
<b>Other:</b>							
<b>If you wish to receive a notification when the consultation report is published, please tick the relevant box opposite:</b>	<input type="checkbox"/> I wish to be notified. <input type="checkbox"/> No, I do not wish to be notified						

**In accordance with the requirements of data protection regulations, we are required to inform you of the following:**

Cyngor Gwynedd seeks your opinion on this proposal as part of a statutory consultation process. The details you provide will be used for this purpose only. The information may be shared with agencies involved with the consultation (e.g., Welsh Government), but only for the purpose of responding to specific matters you may have noted in your response. We will continue to consider your observations; whichever option is chosen. Your personal details will be kept for seven years.

With your permission, it is possible that your observations will be released, in full or without including personal details such as names and addresses, in a report to the Cabinet regarding the consultation. **If you do not want the Council to publish your response, please indicate so below by placing a ✓ in the appropriate box:**

I give consent for the Council to publish my response **in full**.

**I do not agree** to the Council publishing my response.

For more information regarding your rights and the Council Data Protection Officer's details, go to the [Privacy section on the Council website](#).

**Send your response to:**

Modernising Education Office,  
Cyngor Gwynedd Education Department,  
Caernarfon  
LL55 1SH  
or [ModerneiddioAddysg@gwynedd.llyw.cymru](mailto:ModerneiddioAddysg@gwynedd.llyw.cymru)

**Closing date: 13:00 on Tuesday 22/10/24**

**You can respond to this consultation by completing the online response form.**

[www.gwynedd.llyw.cymru/felinwndaresponseform](http://www.gwynedd.llyw.cymru/felinwndaresponseform)

## Part 1

We would like to hear your views on the options (below) relating to the review of the Felinwnda catchment area.

You are asked to indicate your preferred to least preferred option by numbering the options below from 1-3 (or from 1-4 if you want to suggest another option) (1 = preferred, 4 = least preferred) in the relevant box, please:

- Option 1: Transfer Felinwnda catchment area in its entirety to Ysgol Llandwrog catchment area.**
- Option 2: Transfer Felinwnda catchment area in its entirety to Ysgol Bontnewydd catchment area.**
- Option 3: Divide the Felinwnda catchment area in accordance with the dwellings that are geographically closest to Ysgol Llandwrog and Ysgol Bontnewydd.**
- Other (to be noted in the box below)**

Please indicate below any other option or options you would like us to consider:

Comments on the options:



## Part 2 – Assessing the Impact of the options (Optional)

A copy of the impact assessments is available on the Council's website:

[www.gwynedd.llyw.cymru/felinwndacatchmentarea](http://www.gwynedd.llyw.cymru/felinwndacatchmentarea)

### **Assessing the Impact on Equality Characteristics, the Welsh Language and Socio-Economic Disadvantage**

Are there any issues, or potential impacts, that you feel the Council should consider, and that have not already been addressed in the impact assessment or other documents in the consultation?

In particular, are the options likely to have a greater or lesser impact on certain groups of people with equality characteristics.

**In your opinion, are there any changes that can be made to the options that would lead to a more positive effect, or that would reduce or remove any possible negative effects on the Welsh language, on opportunities for people to use the Welsh language and on the status of the Welsh language in the community?**

**Assessing the Well-being Impact**

Are there any issues that the Council should consider as part of their impact assessment?

**Community Impact Assessment**

Are there any issues that the Council should consider as part of their impact assessments?

**Travel Arrangements Impact Assessment**

Are there any issues that the Council should consider as part of their impact assessments?

### Part 3 – Impact on the Welsh Language (Optional)

In accordance with the Welsh Language Standards, the Authority is required to consider the effects of policy decisions it makes on the Welsh language.

**In your opinion, what effects, if any (positive or adverse) would the options have:**

- on opportunities for people to use the Welsh language, or
- on not treating the Welsh language less favourable than English

**In your opinion, how could the options be formulated or modified to ensure that they have positive effects, or more positive effects:**

- on opportunities for people to use the Welsh language, or
- on not treating the Welsh language less favourable than English

**In your opinion, could the options be formulated or modified to ensure that they do not have adverse effects, or have less adverse effects:**

- on opportunities for people to use the Welsh language, or
- on not treating the Welsh language less favourable than English