

Notice to Mariners

Caernarfon Bay Un-crewed Survey Vessel

Geophysical Survey

Vessels and General Safety Advice

Scottish Power Energy Networks Plc and National Grid Electricity Transmission Plc

Date of notice:	05/09/2025
Notice Number:	NtM_WL2_005_2025
Issued by:	Blackhall & Powis
Area of Operations:	Caernarfon Bay
Coordinates for the activities are attached below.	

Western Link 2 Project

Mariners are advised that Fugro, on behalf of Western Link 2 (WL2), will be undertaking a geophysical survey campaign in Caernarfon Bay.

Scottish Power Energy Networks Plc and National Grid Electricity Transmission Plc are developing two High Voltage Direct Current (HVDC) electricity transmission links as part of the Western Link 2 (WL2) subsea cable project. The cable will have two landing points in Scotland before running south through the Irish Sea to a landing point in North Wales.

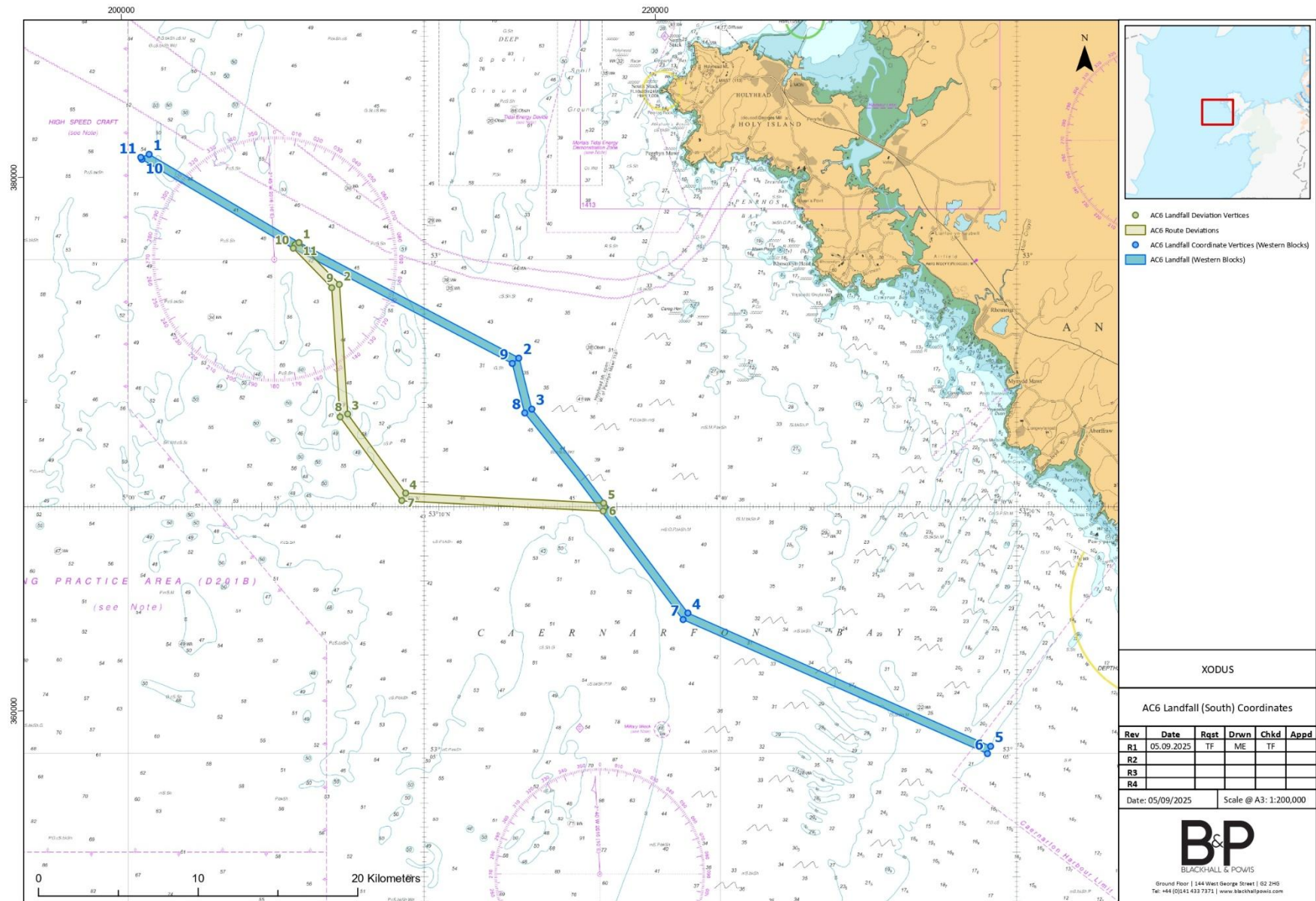
The WL2 project will play a vital role in achieving the UK, Welsh and Scottish Governments' net zero carbon emission targets; increase energy security and significantly increase the UK's capacity for clean, green renewable power.

Survey Description

The Un-crewed Survey Vessel (USV) deployment for WL2 is due to commence on 19/09/2025, subject to weather. The marine works are expected to be completed by 11/10/2025, subject to weather. The USV is controlled from a Remote Operations Centre (ROC). USV details are provided in **Figure 2**, and contact information is listed in **Table 3**. The un-crewed survey vessel, USV Orca will conduct geophysical surveys in Caernarfon Bay. The USV Orca will be supported by the vessel, Tonijn, see vessel details **Figure 3**, and contact information, **Table 4**.

The area of work pertaining to this Notice to Mariners is illustrated in **Figure 1** and the details and coordinates for the survey corridors are provided in **Tables 1 and 2**. A main corridor and alternate corridor are depicted in **Figure 1**. Mobilisation will occur in Liverpool.

Figure 1: USV Survey Area in Caernarfon Bay



Survey Corridor Coordinates

Table 1: Primary Survey Corridor

Point	Degrees Decimal Minutes		UTM	
	Latitude	Longitude	Easting	Northing
1	53° 17.110' N	004° 59.294' W	30U 367457	5905837
2	53° 12.993' N	004° 46.812' W	30U 381134	5897838
3	53° 11.961' N	004° 46.369' W	30U 381579	5895914
4	53° 07.834' N	004° 41.099' W	30U 387266	5888122
5	53° 05.133' N	004° 30.877' W	30U 398557	5882860
6	53° 04.985' N	004° 30.986' W	30U 398430	5882588
7	53° 07.702' N	004° 41.262' W	30U 387078	5887881
8	53° 11.884' N	004° 46.609' W	30U 381308	5895777
9	53° 12.885' N	004° 47.030' W	30U 380886	5897645
10	53° 17.009' N	004° 59.536' W	30U 367183	5905657
11	53° 17.049' N	004° 59.575' W	30U 367142	5905732

Table 2: Alternate Survey Corridor

Point	Degrees Decimal Minutes		UTM	
	Latitude	Longitude	Easting	Northing
1	53° 15.327' N	004° 54.234' W	30U 372990	5902378
2	53° 14.483' N	004° 52.872' W	30U 374463	5900774
3	53° 11.863' N	004° 52.589' W	30U 374650	5895909
4	53° 10.263' N	004° 50.631' W	30U 376754	5892886
5	53° 10.060' N	004° 43.947' W	30U 384190	5892324
6	53° 09.899' N	004° 43.961' W	30U 384168	5892025
7	53° 10.112' N	004° 50.762' W	30U 376601	5892610
8	53° 11.803' N	004° 52.845' W	30U 374363	5895804
9	53° 14.416' N	004° 53.127' W	30U 374176	5900657
10	53° 15.214' N	004° 54.427' W	30U 372770	5902174
11	53° 15.285' N	004° 54.310' W	30U 372990	5902378

Un-crewed Survey Vessel (USV)

The WL2 marine survey works are being carried out by Fugro with the USV 'Orca.'

Figure 2: Un-crewed Survey Vessel (USV)


USV Orca	
Equipment	
Features and Specifications	<ul style="list-style-type: none">• Remote Operation Centre (ROC)<ul style="list-style-type: none">○ Remote controlled, and○ Semi-autonomous• 24/7 support• Electric powered• Safety features<ul style="list-style-type: none">○ Dual radar○ Emergency anchor○ Loud speaker○ Night vision○ 360° camera○ VHF radio• High definition camera and full inspection sensor spread• GPS Positioning• USV Dimensions<ul style="list-style-type: none">○ LOA: 11.75 m○ Beam: 2.2 m○ Draft: approximately 2.3 m

Table 3: USV Contact Details

USV Orca	
Captains	<ul style="list-style-type: none">• Grigorij Mancinskij (Days)• Roman Stelmach (Nights)
Telephone Master/Operator (ROC))	+44 1224 257 452
Chief USV Master (ROC)	VHF 06
Email	USV1.orca@fugro.com

Support Vessel Details

The WL2 marine survey works are being carried out by Fugro with the support vessel 'Tonijn.'

Figure 3: Support Vessel Description


MV Tonijn		
	Call Sign:	T7AL5
	IMO Number	7505358
	Vessel Number	SMR0734

Table 4: Support Vessel Contact Details

VESSEL NAME – MV Tonijn	
Skipper	N/A
Vessel Email	tonijn@dbconnect.nl
Vessel Contact No.	V-Sat +31 255 760015
VHF Channel	16

Fisheries Liaison Officers

Fishing liaison for the operations will be coordinated by Blackhall & Powis Ltd. For any commercial fishery queries please contact the Fisheries Liaison Team, listed below.

Name	Contact No.	Email
Tommy Finn CFLO	07787 503119	Tommy.Finn@blackhallpowis.com
Douglas Brander Fisheries Liaison	07307 195830	Douglas.Brande@blackhallpowis.com
Eva Purfit Operations Manager	07827 627464	Eva.Purfit@blackhallpowis.com

Fishing Industry Representative

The local Fishing Industries Representative (FIR) will also be in place to liaise with the vessels and fishing operations in the survey area.

Name	Contact Number	Email
Jason Thomas	07788 820635	southquayshellfish@hotmail.co.uk

General Safety Advice

The vessel will be restricted in its ability to maneuver and will display the appropriate lights and shapes prescribed by the International Regulations for Preventing Collisions at Sea. Other vessels are requested to provide a minimum clearance of 500m from the survey vessel during marine operations and pass at a safe speed. Regular Security Messages will be issued on VHF Channel 16 and this Channel will be always monitored by the vessel. The vessel will also transmit regular Automatic Identification System (AIS) Messages

Legal Notice

Please be advised that this Notice to Mariners should be treated as official notice of the nature, duration and location of the works which are scheduled to take place. During the period of this notice, we request that you plan your activities around our short-term, temporary activities.