

Notice to Mariners

Caernarfon Bay Metocean ADCP

Vessels and General Safety Advice

Scottish Power Energy Networks Plc and National Grid Electricity Transmission Plc

| | |
|--|-------------------|
| Date of notice: | 29/08/2025 |
| Notice Number: | WL2_002_2025 |
| Issued by: | Blackhall & Powis |
| Area of Operations: | Caernarfon Bay |
| Coordinates for the activities are attached below. | |

Western Link 2 Project

Mariners are advised that Fugro, on behalf of Western Link 2 (WL2) will be undertaking a metocean measurement campaign, deploying equipment on the sea floor. Data will be collected by deploying an Acoustic Doppler Current Profiler (ADCP) just outside of the Caernarfon Harbour Limit.

Scottish Power Energy Networks Plc and National Grid Electricity Transmission Plc are developing two High Voltage Direct Current (HVDC) electricity transmission links as part of the Western Link 2 (WL2) subsea cable project. The cable will have two landing points in Scotland before running south through the Irish Sea to a landing point in North Wales.

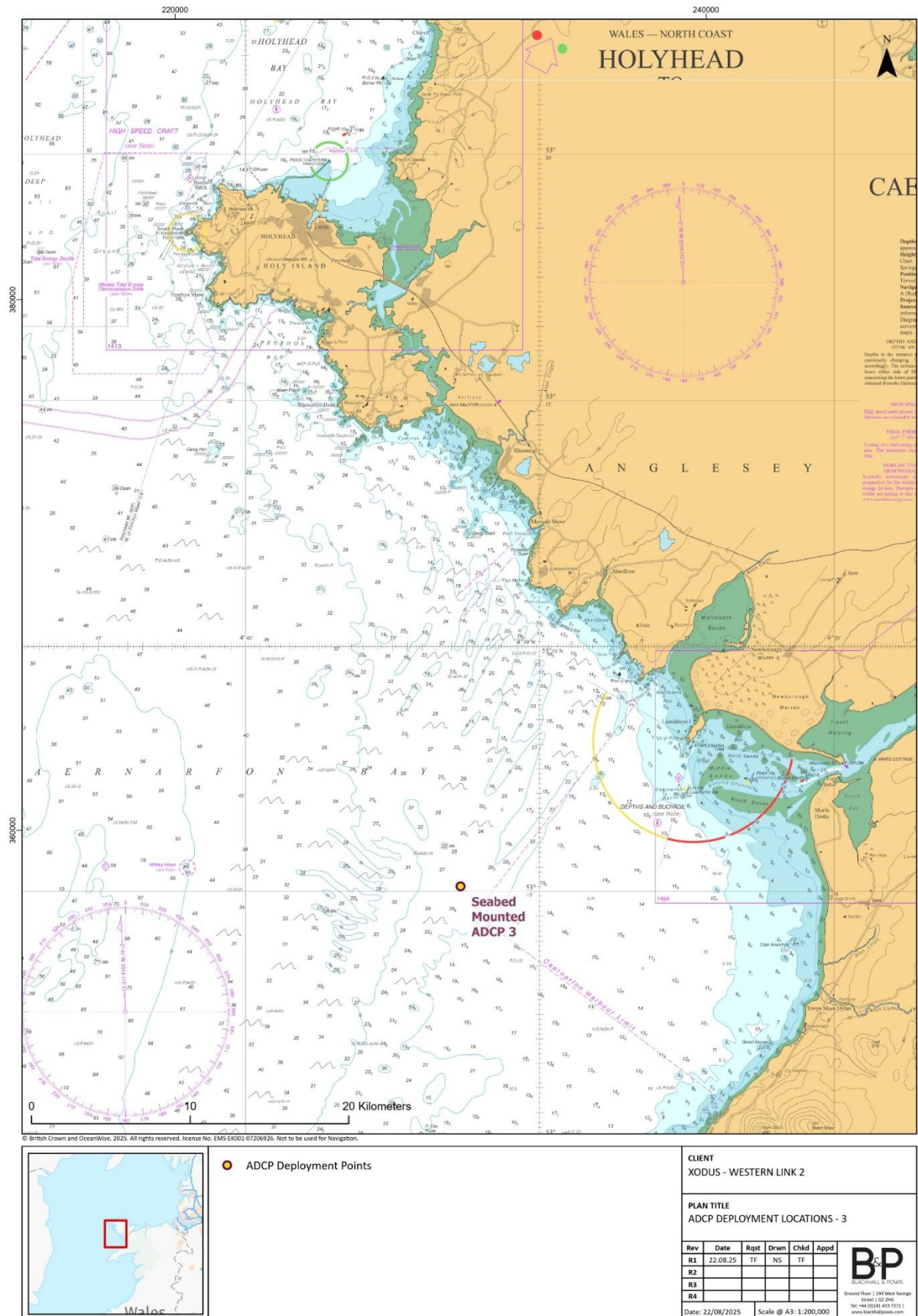
The WL2 project will play a vital role in achieving the UK, Welsh and Scottish Governments' net zero carbon emission targets; increase energy security and significantly increase the UK's capacity for clean, green renewable power.

Survey Description

The metocean ADCP seabed frame deployment for WL2 is due to commence on 05/09/2025, subject to weather. The ADCP seabed frame is expected to be recovered by 20/10/2025, subject to weather. The ADCP seabed frame is a weighted object with imbedded sensors, which sit passively on the sea floor to collect environmental data. It will be deployed in Caernarfon Bay, just outside of the harbour boundary. The ADCP will collect current profiles, turbidity, and temperature measurements at each site of deployment.

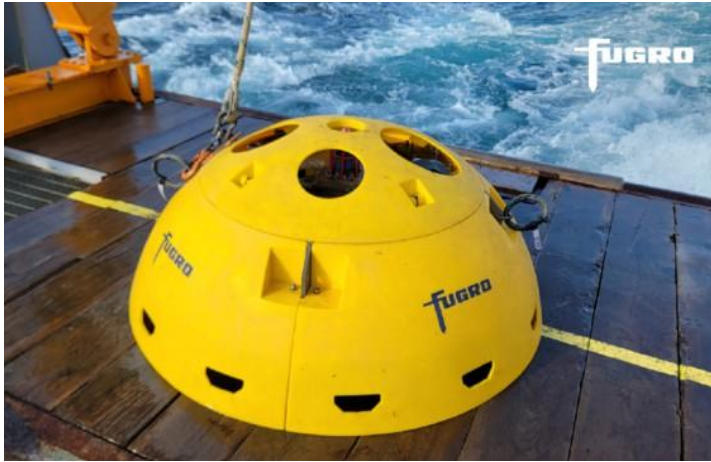
The area of work pertaining to this Notice to Mariners is illustrated in **Figure 1** and the details and position of the ADCP is provided in **Table 1**. **Figure 2/Table 2** provide support vessel details. Mobilisation will occur in Holyhead Port.

Figure 1: ADCP Deployment in Caernarfon Bay



Metocean Acoustic Doppler Current Profiler (ADCP)

Table 1: ADCP Details and Postion

| Metocean ADCP | | |
|--|---|------------------|
| Equipment |  | |
| Data Parameters Measured and Features | <ul style="list-style-type: none"> • Seabed Mounted • Current profiler • Turbidity • Temp and Pressure • Inclination • GPS Position • Float Release Mechanism • ADCP Seabed Frame Dimensions <ul style="list-style-type: none"> ○ Diameter: 1.7 m ○ Height: 0.6 m ○ Weight: 400 kg ○ Buoyancy: 80 kg | |
| Location | Caernarfon Bay: Approximately 12 km west of Caernarfon | |
| Work Site Position: Degrees Decimal Minutes | Latitude | Longitude |
| ADCP 3 | 53° 05.100' N | 004° 32.700' W |

Support Vessel Details

The WL2 marine survey works are being carried out by Fugro with the support vessel 'CT Barnston.'

Figure 2: Support Vessel Description


| CT Barnston | | |
|---|------------|-----------|
|  | Call Sign: | MLZU5 |
| | MMSI: | 235100118 |

Table 2: Support Vessel Contact Details

| VESSEL NAME – CT Barnston | |
|---------------------------|--|
| Skipper | Michael Castermans |
| Vessel Email | barnston@carmet.co.uk |
| Vessel Contact No. | +44 7845 847176 |
| VHF Channel | 16 |

Fisheries Liaison Officers

Fishing liaison for the operations will be coordinated by Blackhall & Powis Ltd. For any commercial fishery queries please contact the Fisheries Liaison Team, listed below.

| Name | Contact No. | Email |
|--------------------------------------|--------------|-----------------------------------|
| Tommy Finn CFLO | 07787 503119 | Tommy.Finn@blackhallpowis.com |
| Douglas Brander Fisheries Liaison | 07307 195830 | Douglas.Brande@blackhallpowis.com |
| Eva Purfit Operations Manager | 07827 627464 | Eva.Purfit@blackhallpowis.com |

Fishing Industry Representative

The local Fishing Industries Representative (FIR) will also be in place to liaise with the vessels and fishing operations in the survey area.

| Name | Contact Number | Email |
|---------------------|-----------------------|----------------------------------|
| Jason Thomas | 07788 820635 | southquayshellfish@hotmail.co.uk |

General Safety Advice

The vessel will be restricted in its ability to maneuver and will display the appropriate lights and shapes prescribed by the International Regulations for Preventing Collisions at Sea. Other vessels are requested to provide a minimum clearance of 500m from the survey vessel during marine operations and pass at a safe speed. Regular Security Messages will be issued on VHF Channel 16 and this Channel will be always monitored by the vessel. The vessel will also transmit regular Automatic Identification System (AIS) Messages

Legal Notice

Please be advised that this Notice to Mariners should be treated as official notice of the nature, duration and location of the works which are scheduled to take place. During the period of this notice, we request that you plan your activities around our short-term, temporary activities.