

Cyngor Sir Ynys Môn • The Isle of Anglesey County Council

Ynys Môn

The Isle of
Anglesey

Anglesey Landscape Strategy

Update 2011



CYNGOR SIR
YNYS MÔN
ISLE OF ANGLESEY
COUNTY COUNCIL



TACP

ISLE OF ANGLESEY COUNCIL

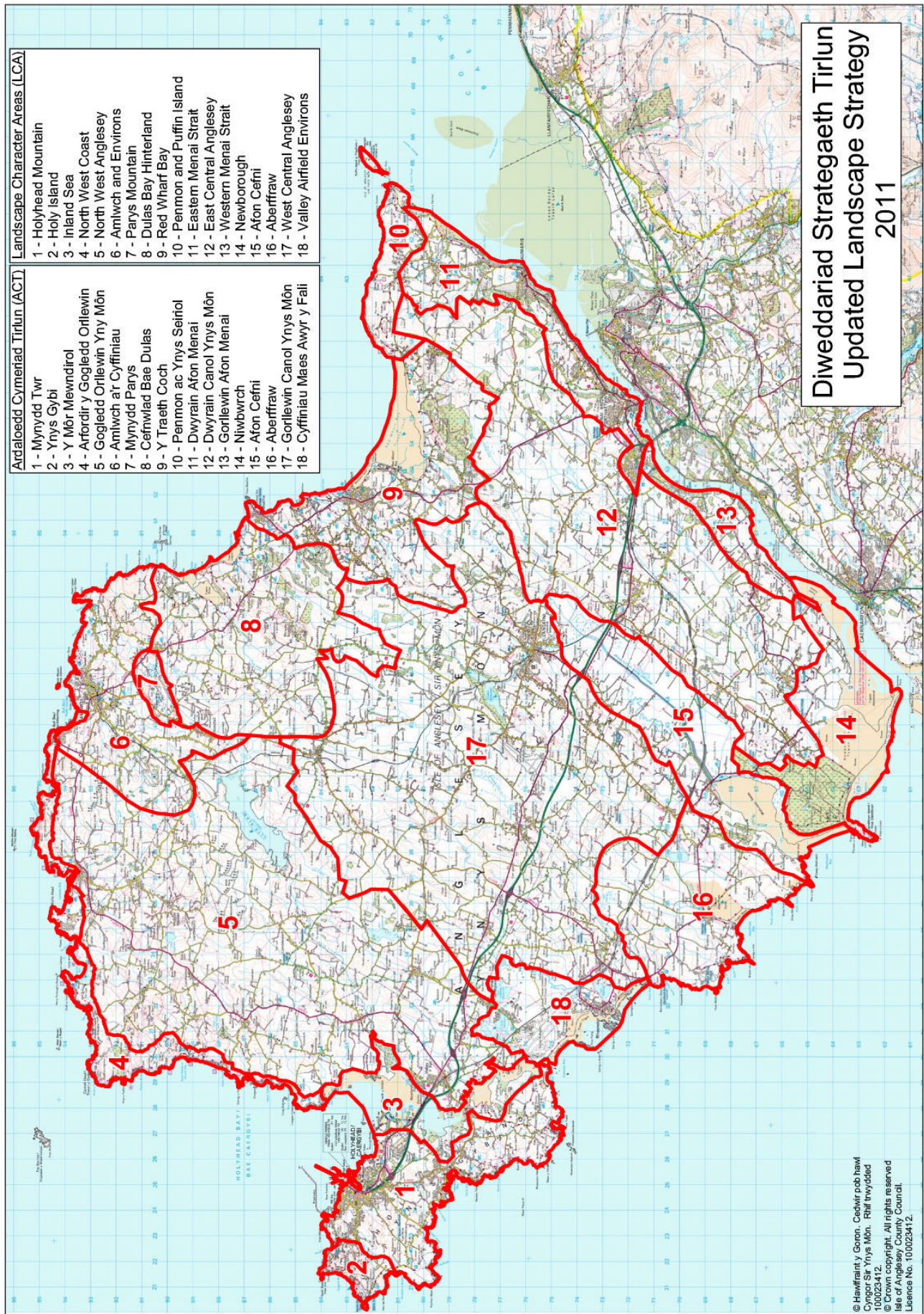
LANDSCAPE CHARACTER AREA UPDATE

2011

TACP
10 Park Grove
Cardiff
CF10 3BN

Contents

1.0	Introduction	5
2.0	Landscape Character Areas.....	7
LANDSCAPE CHARACTER AREA 1: HOLYHEAD MOUNTAIN		8
LANDSCAPE CHARACTER AREA 2: HOLY ISLAND.....		11
LANDSCAPE CHARACTER AREA 3: INLAND SEA		15
LANDSCAPE CHARACTER AREA 4: NORTH WEST COAST		19
LANDSCAPE CHARACTER AREA 5: NORTH WEST ANGLESEY		23
LANDSCAPE CHARACTER AREA 6: AMLWCH AND ENVIRONS		28
LANDSCAPE CHARACTER AREA 7: PARYS MOUNTAIN		32
LANDSCAPE CHARACTER AREA 8: DULAS BAY HINTERLAND		35
LANDSCAPE CHARACTER AREA 9: RED WHARF BAY		39
LANDSCAPE CHARACTER AREA 10: PENMON AND PUFFIN ISLAND		43
LANDSCAPE CHARACTER AREA 11: EASTERN MENAI STRAIT		47
LANDSCAPE CHARACTER AREA 12: EAST CENTRAL ANGLESEY		52
LANDSCAPE CHARACTER AREA 13: WESTERN MENAI STRAIT		57
LANDSCAPE CHARACTER AREA 14: NEWBOROUGH		61
LANDSCAPE CHARACTER AREA 15: AFON CEFNI.....		65
LANDSCAPE CHARACTER AREA 16: ABERFFRAW.....		69
LANDSCAPE CHARACTER AREA 17: WEST CENTRAL ANGLESEY		73
LANDSCAPE CHARACTER AREA 18: VALLEY AIRFIELD ENVIRONS		78



ANGLESEY LANDSCAPE CHARACTER AREA UPDATE

1.0 Introduction

- 1.1 TACP Consultants were appointed by Isle of Anglesey Council in April 2010 to undertake a review of the Landscape Character Areas (LCAs) identified within the original LANDMAP landscape assessment study for Anglesey published in 1999.
- 1.2 The study has been carried out in response to changes within the LANDMAP methodology which has resulted from the application of the process to Wales as a whole. Consequently in 2003 the Countryside Council for Wales (CCW) introduced a quality assurance programme for checking LANDMAP studies. This has led to alterations to LANDMAP aspect topic areas and evaluation levels.
- 1.3 The LANDMAP methodology provides a wealth of data for the individual evaluated aspect topics. These provide detail of the nature and importance of the individual aspect layers. However, it is also important to understand how the aspect topics combine to produce distinctive areas of landscape with a recognisable 'sense of place' or 'local identity'. These form the individual LCAs. They are defined by overlaying the different aspect topic layer information and identifying areas where the combination of aspects is broadly the same and/or have distinct characteristics and a coherent sense of identity. LCAs provide a useful framework for description, management and policy formulation.
- 1.4 It is important to recognise that the boundaries between LCAs are rarely distinct. Effectively they are based upon best judgement of a gradual, but discernible change in character. Furthermore, the number and scale of LCAs identified will reflect the particular qualities of the study area concerned. Anglesey is the largest of the Welsh islands, covering some 720 square kilometres and separated from the mainland by the Menai Strait. The main towns on the island are Llangefni, Holyhead, Amlwch, Benllech, Menai Bridge and Llanfair PG. The topography of the island is generally subdued with a rolling, undulating pattern interspersed by harder, rocky outcrops such as Holy Island, Mynydd Parys, Mynydd Bodafon and Mynydd Llwydiarth. The landform falls east to west, with a number of low lying areas along the western coast including Aberffraw, Malltraeth Marsh and Newborough Warren. This landform pattern is reflected in the north east – south west alignment of water courses.
- 1.5 This general character belies a complex, underlying geology and effects of geomorphological processes such as glaciation. The island contains some of the oldest rocks in Wales and Britain as a whole, and these are clearly illustrated in the topography of the island. Extensive tree cover is generally scarce, although ancient semi-natural woodlands are found along the Menai Strait, and extensive plantations can be found around Mynydd Llwydiarth and Newborough Warren. The island shows a rich cultural history with evidence of man's actions extending over some 8000 years. There are over 200

Scheduled Ancient Monuments ranging from Bronze Age burial chambers to later medieval features. More recent landscape features include the planned landscapes of large estates, such as Plas Newydd, major transportation routes, industrial features including nuclear power and windfarms. The rich variation and quality in the coastal landscape is reflected in its designation as an Area of Outstanding Natural Beauty. This designation underpins the focus of any management or design guidance within its area.

- 1.6** Given Anglesey's island nature, reference has also been made to the Seascape Assessment of Wales, published by CCW in 2009. This considers seascape units which it defines as any area of sea, coastline or land whose perceived character is the result of the actions and intersections on land and sea by natural and/or human factors. This has led to five national and fifty regional seascape units being identified for the Welsh coast. Each regional unit is characterised by a basic typology based upon a reference to the sea, surface geology, height and land use and its sensitivity to change.

Anglesey lies within the North Wales and Caernarfon Bay national seascape units and includes 9 regional units as follows:-

- 5 - Great Orme Head to Puffin Island
- 6 - Puffin Island to Point Lynas
- 7 - Point Lynas to Carmel Head
- 8 - Carmel Head to Holyhead Mountain North Stack
- 9 - Holyhead Mountain North Stack to Penrhyn Mawr
- 10 - Holy Island Straits
- 11 - Penrhyn Mawr to Pen y Parc/Malltraeth Bay
- 12 - Menai Strait
- 13 - Malltraeth Bay to Trefor

It can be seen from the list that the regional units relate primarily to areas of coast between prominent headlands. These have been cross referenced to LANDMAP data, but it is apparent that they include more than one LCA as defined within this study. Consequently reference is made to the relevant seascape unit for each LCA as it is described. Details of each regional seascape unit can be accessed from the CCW website (ccw.gov.uk – landscape & wildlife, Seascapes Assessment of Wales). These provide details upon physical characteristics, use, visual and sensory qualities, cultural associations and forces for change. Much of this supports the key issues identified for each LCA and how they can be addressed.

- 1.7** Following the preparation of a review paper in May 2010 a meeting was held with officers of Isle of Anglesey County Council to discuss an appropriate way forward. Of particular importance was the incorporation of the updated LANDMAP data and the identification of key design and management issues for each LCA. The outcome of this exercise was an agreement to increase the number of LCAs from 15 to 18. These are illustrated on Figure 2.0 and are described in more detail in the following sections of this report.

2.0 Landscape Character Areas

2.1 The following section of the report contains the updated LCAs. In each instance the landscape character elements which define each area are set out, together with the key landscape issues arising from the LANDMAP exercise. This is further supported by reference to the relevant LANDMAP aspect areas by each topic which form the LCA.

2.2 The evaluation matrix gives the evaluation levels for each of the five aspect area topics. The sub criteria for each aspect topic layer are as follows:

Geological Landscapes	1 – Research/Educational Value 2 – Historic Value 3 – Rarity/Uniqueness 4 – Classic Example
Landscape Habitats	1 – Priority Habitats 2 – Significance 3 – Opportunity 4 – Decline Rates 5 – Threat 6 – Fragmentation 7 – Habitat Evaluation 8 – Importance for Key Species
Visual and Sensory	1 – Scenic Quality 2 – Integrity 3 – Character 4 – Rarity
Historic Landscapes	1 – Rarity 2 – Survival/Preservation 3 – Rarity 4 – Documentation 5 – Group Value 6 – Survival 7 – Vulnerability 8 – Diversity 9 – Potential

Each of the aspect tables are colour coded as detailed below:

- Red – Outstanding
- Green – High
- Blue – Moderate
- Yellow – Low
- White – Unassessed

More detailed definitions of each of the sub criteria are available in the LANDMAP Handbook or through the LANDMAP website – <http://landmap.ccw.gov.uk>

LANDSCAPE CHARACTER AREA 1: HOLYHEAD MOUNTAIN





Gogarth Bay, Holyhead Mountain



Abraham's Bosom and South Stack

Description

Holyhead Mountain forms the highest point on Anglesey, rising up to 220 metres AOD. It has a distinctive rounded profile which reflects the underlying geology of metamorphic Cambrian age rocks and includes the well known South and North Stacks on its rocky northern coastline. The resultant landscape is one of open rocky moorland with immense natural history and historic/cultural interest. It includes Holyhead Mountain Conservation Area and the Breakwater Country Park, the site of a disused quarry, and the settlement pattern reflects this quarrying past. An isolated, wild non tame landscape with distinctive land use and fine views. Its historic and cultural values are also important. There is evidence of settlement from prehistoric times, through to the wider encroachment of common land and quarrying. Culturally it forms an iconic feature, especially to the many immigrants from Ireland, where it was the first sight of the UK. The importance of the LCA is reflected by the range of statutory designations – SSSI, SAC, SPA, SAM, RIGS that are found. Cross reference to Regional Seascape Unit 8.

Key Issues

Habitat & Geological Management

There are a number of important habitats and geological features in this area, including upland, moorland, rock outcrops and distinctive features. Any development or management proposals should ensure that:-

- Direct and consequential impacts, especially on habitat areas addressed.
- Consider the potential for habitat development or enhancement.
- Protection of geological features, many of national /international value.
- Have regard to the AONB Management Plan.

Historic Landscapes

The area contains relicts of quarrying both in the form of disused quarries, but also a distinctive settlement pattern. Particular consideration should be given for any proposals to develop or extend the Breakwater County Park respect these qualities. An important consideration will be the impact of increased visitor numbers, both to the County Park and also the RSPB facility at South Stack. Consideration should also be given to the Holyhead Mountain Conservation Area SPG.

LANDMAP Aspect Area Matrix – LCA1 Holyhead Mountain												
Aspect Area	UID	Area Name	1	2	3	4	5	6	7	8	9	Overall Evaluation
Geological Landscapes	YNSMNGLO81	Cors	L	L	L	L						Moderate
	YNSMNGLO78	Holyhead Mountain	H	H	M	H						High
	YNSMNGLO79	Tyddyn	M	M	M	M						Moderate
	YNSMNGLO80	South Stack	H	M	M	M						High
	YNSMNGLO92	South Stack – Holyhead Coast	O	O	O	O						Outstanding
Landscape Habitats	YNSMNLH035	Farmland NW of Holyhead	L	L	M	U	L	U	L	L		Low
	YNSMNLH047	Farmland SW of Holyhead	L	L	M	U	L	U	L	M		Low
	YNSMNLH054	Holyhead Mountain heath	H	H	L	U	H	H	O	O		Outstanding
	YNSMNLH117	Cors Tre Wilmot	H	H	L	U	H	L	H	M		Moderate
	YNSMNLH126	Holy Island – Clifed Coast	O	O	L	U	U	H	O	O		Outstanding
Visual & Sensory	YNSMNVSO01	Holyhead Mountain	O	H	O	O						Outstanding
	YNSMNVSO07	Holy Island	H	M	H	M						High
	YNSMNVSO54	Holy Island Coast	H	H	H	M						High
	YNSMNVSO55	South Stack/North Stack	U	O	H	O						Outstanding
Historic Landscapes	YNSMNLH030	Holyhead	O	O	M	H						Outstanding
	YNSMNLH031	Holy Island/South Stack	O	O	H	O	M					Outstanding
Cultural Landscapes	YNSMNCL001		U	O	O	H	O	H	H	H	M	Outstanding
	YNSMNCL002	Holyhead Mountain	O	O	O	U	O	H	L	H	L	Outstanding
	YNSMNCL003	Breakwater & Country Park	M	O	O	H	H	H	U	M	M	Outstanding
	YNSMNCL019	Northern Coast	H	H	H	U	H	H	H	M	M	Outstanding

LANDSCAPE CHARACTER AREA 2: HOLY ISLAND



Description

The LCA forms the majority of Holy Island and contains the main settlement of the island, Holyhead. It is a physically distinct unit separated from the main island but linked by a causeway (Stanley Embankment) and the Four Mile Bridge. It falls into two distinctive sub units, separated by the development corridor of Holyhead-Trearddur along the B4545 road. To the north of this, the landscape is relatively low lying but due to the underlying geology has a number of craggy outcrops. The area has small fields typically with stone boundaries and gorse hedges. The fir trees that grow here exhibit a windblown form. To the south of the road, again there are rough, craggy areas. However around Rhoscolyn is an area of more undulating terrain, where glacial clay cover is more widespread, with discrete rocky outcrops and areas of coastal and estuarine alluvium. At Penrhos is the former estate of the Stanley family which is now managed as a Country Park.

There are a number of important habitats - dry heaths, coastal and intertidal - often within a larger matrix of improved grassland. However many of these 'islands' of habitat value are designated as SSSIs. Holyhead and Trearddur form the main settlement axis. Holyhead, centred on a Roman town, has become a major port with associated industries. In more recent years the arrival of the A55 has increased this. Part of the town is designated as a Conservation Area. Trearddur is a good example of the influence that tourism can bring to an area to affect its character. The hotels, second homes, camping and caravan sites together with the golf course all contribute to this. Notwithstanding this, the LCA represents a landscape character that is quite distinctive – rural, wild, exposed, coastal – with the main detractor being aircraft noise from the adjacent RAF Valley airfield. Cross reference to Seascapes Regional Units 8, 9 and 10.

Key Issues

Settlement Edge

Development around the settlement edges should:-

- Be of a form that reflects the character and qualities of each settlement.
- Be considered in terms of cumulative landscape impacts rather than just the site itself.
- Use landform and vegetation patterns to assist in mitigation of any impacts.
- Do not impose standard solutions, utilise inherent local characteristics.
- Have regard to Holyhead Central Conservation Area and Holyhead Beach Conservation Area SPGs.

Coastal Landscapes

Given the pressure for recreational and tourism developments should take into account:-

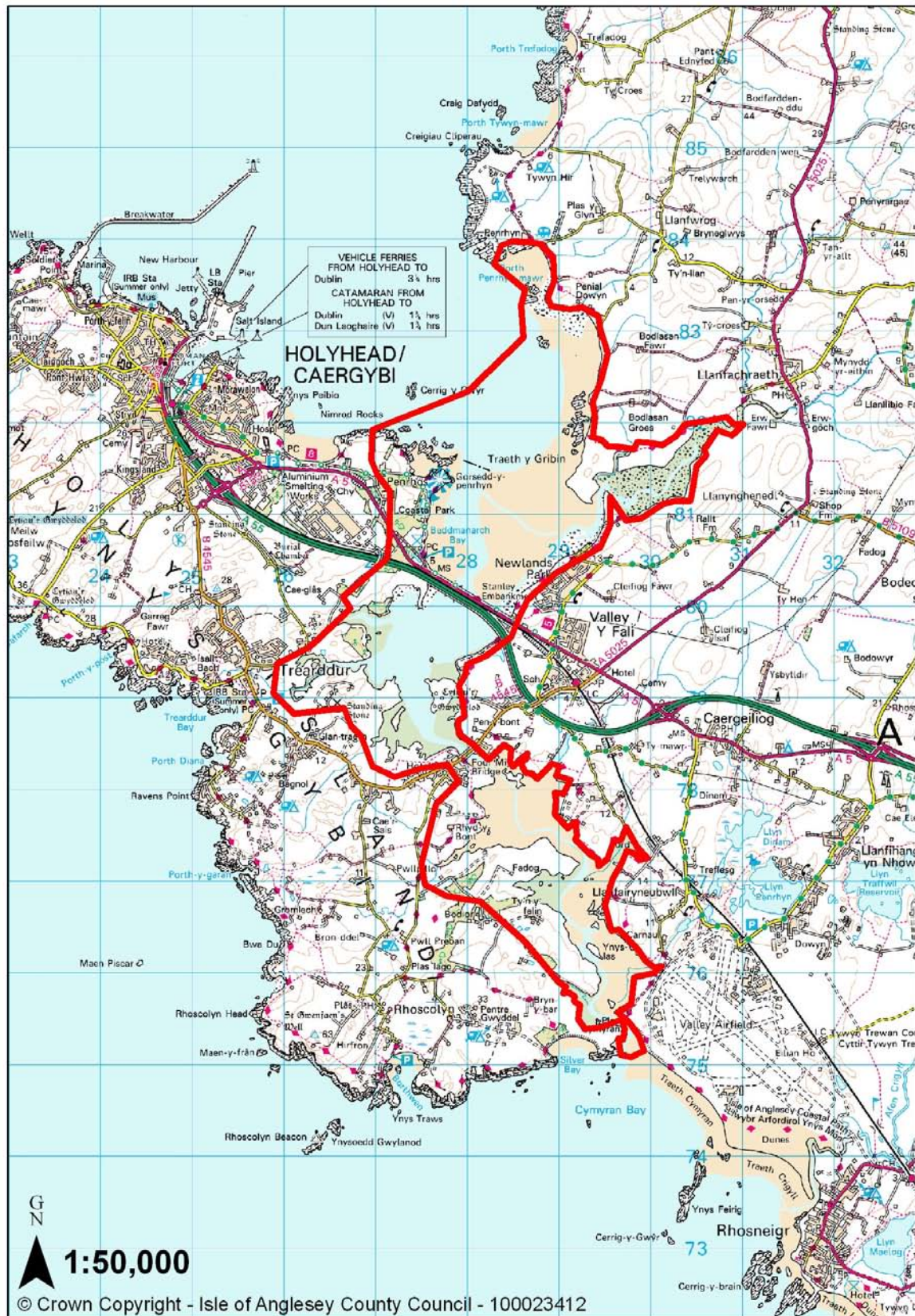
- Direct or indirect impact upon coastal landscapes.
- Visual impact on people's perception of the coast, its character and qualities.
- Have regard to the AONB Management Plan.

Habitat Management

Many of the important habitats within the area are protected by statutory designations which provide significant controls in terms of development. Given that, it is important to ensure that opportunities are taken to enhance the wider habitat range in considering development or management schemes.

Landmap Aspect Area Matrix - LCA 2 Holy Island												
Aspect Area	UID	AreaName	1	2	3	4	5	6	7	8	9	Overall Evaluation
Geological Landscapes	YNSMNGLO66	Tywyn Trwan Common	L	L	L	L						Low
	YNSMNGLO88	Roscolyn	M	L	M	L						Moderate
	YNSMNGLO84	Trearddur (Bay)	L	L	L	L						Moderate
	YNSMNGLO85	Trearddur (S)	H	M	M	M						High
	YNSMNGLO86	Cae'r Sais	O	H	O	H						Outstanding
	YNSMNGLO87	Gwynfryn	L	L	L	L						Moderate
	YNSMNGLO90	Four Mile Bridge	M	L	L	L						Moderate
	YNSMNGLO91	Trearddur coast	O	H	H	H						Outstanding
	YNSMNGLO99	Rhoscolyn coast	O	O	O	O						Outstanding
	YNSMNGLO81	Cors	L	L	L	L						Moderate
	YNSMNGLO77	Holyhead	L	L	L	L						Low
	YNSMNGLO78	Holyhead Mountain	H	H	M	H						High
	YNSMNGLO79	Tyddyn	M	M	M	M						Moderate
	YNSMNGLO80	South Stack	H	M	M	M						High
	YNSMNGLO82	Ty-mawr	L	L	L	L						Moderate
	YNSMNGLO83	Trearddur (N)	M	L	M	M						Moderate
	YNSMNGLO89	Penrhos	L	L	L	L						Moderate
	YNSMNGLO92	South Stack-Holyhead coast	O	O	O	O						Outstanding
	YNSMNGLO93	Penrhos coast	H	M	H	H						High
Landscape Habitats	YNSMNLH002	Tre Wilmot	H	H	L	U	H	H	O	H		Outstanding
	YNSMNLH003	Heath S. of Penrhosfelw	H	H	L	U	H	H	O	O		Outstanding
	YNSMNLH017	Coastal Heath S. of Penrhosfelw	O	H	L	U	H	H	O	H		Outstanding
	YNSMNLH023	Rhostir Ty'n Mynydd	M	M	U	U	M	L	M	M		Moderate
	YNSMNLH024	RAF Valley Airfields	H	H	M	U	U	H	H	M		Moderate
	YNSMNLH035	Farmland N.W. of Holyhead	L	L	M	U	L	U	L	L		Low
	YNSMNLH047	Farmland S.W. of Holyhead	L	L	M	U	L	U	L	M		Low
	YNSMNLH054	Holyhead Mountain heath	H	H	L	U	H	H	O	O		Outstanding
	YNSMNLH062	W. of Holyhead	U	U	M	U	U	M	M	M		Moderate
	YNSMNLH063	Inland Sea	H	O	L	U	H	M	H	H		High
	YNSMNLH082	Holyhead Golfcourse	L	M	M	U	U	L	M	M		Moderate
	YNSMNLH102	Holyhead Breakwater and adjacent land	M	M	M	U	M	M	M	L		Moderate
	YNSMNLH105	Farmland - Trearddur to Holyhead	L	L	M	U	L	U	L	L		Low
	YNSMNLH114	Coast - Porth Corgwl to Cymaran Bay	O	H	L	U	M	H	O	H		Outstanding
	YNSMNLH117	Cors Tre Wilmot	H	H	L	U	H	L	H	M		Moderate
	YNSMNLH122	Holyhead	L	L	M	U	U	L	L	L		Low
	YNSMNLH123	Trearddur	L	L	M	U	U	L	L	M		Low
	YNSMNLH124	Farmland S. of Holyhead	M	H	M	U	M	M	M	M		Moderate
	YNSMNLH125	Beddmanarch Bay	H	H	L	U	H	M	H	H		High
	YNSMNLH126	Holy Island - Cliffed Coast	O	O	L	U	U	H	O	O		Outstanding
	YNSMNLH132	Rhoscolyn Area	M	M	M	U	M	M	M	M		Moderate
	YNSMNLH143	Coedydd Ysad Bodior	U	M	U	U	M	M	M	L		Moderate
Visual & Sensory	YNSMNV5001	Holyhead Mountain	O	H	O	O						Outstanding
	YNSMNV5007	Holy Island	H	M	H	M						High
	YNSMNV5030	Holy Island straits	H	H	H	O						High
	YNSMNV5032	Penrhos Beach	H	M	H	M						High
	YNSMNV5054	Holy Island coast	H	H	H	M						High
	YNSMNV5058	Holyhead	M	L	H	M						Moderate
	YNSMNV5064	Trearddur	L	L	H	M						Moderate
	YNSMNV5083	Holyhead Harbour	M	M	H	O						High
	YNSMNV5084	Aluminium Works	L	L	H	H						Low
	YNSMNV5085	Penrhos Coastal Park	M	M	M	M						Moderate
Historic Landscapes	YNSMNV5091	A55 corridor	L	L	M	L						Low
	YNSMNLH026	RAF Valley	H	H	H	O	O					Outstanding
	YNSMNLH027	Rhoscolyn	H	H	H	H	M					High
	YNSMNLH028	Trearddur Bay area	H	H	M	M	M					High
	YNSMNLH029	Penrhos	L	M	L	M	M					Moderate
	YNSMNLH030	Holyhead	O	O	M	O	H					Outstanding
	YNSMNLH031	Holy Island/South Stack	O	O	H	O	M					Outstanding
Cultural Landscapes	YNSMNLH073	Penrhos Park	M	L	L	M	H					Moderate
	YNSMNCLO01		U	O	O	H	O	H	H	H	M	Outstanding
	YNSMNCLO02	Holyhead Mountain	O	O	O	U	O	H	L	H	L	Outstanding
	YNSMNCLO03	Breakwater, Breakwater Country Park	M	O	O	H	H	H	U	M	M	Outstanding
	YNSMNCLO04	Holyhead harbour	H	O	O	H	O	O	H	H	U	Outstanding
	YNSMNCLO05	Anglesey Aluminum	H	M	H	H	M	L	H	L	L	Outstanding
	YNSMNCLO06	A5 Road	O	O	O	O	O	O	L	M	M	Outstanding
	YNSMNCLO08	A55 road	H	M	L	L	M	L	L	H	M	High
	YNSMNCLO09	Railway - Chester to Holyhead	H	O	O	O	O	M	H	H	O	Outstanding
	YNSMNCLO11	Rhosneigr	U	M	M	U	H	M	U	M	H	High
	YNSMNCLO19	Northern Coast	H	H	H	U	H	H	H	M	M	Outstanding
	YNSMNCLO31	Sustrans Cycle Route	O	M	H	L	M	L	L	H	M	High
	YNSMNCLO32	Trearddur Bay	H	H	M	U	H	H	M	M	M	High
	YNSMNCLO34	South west coast	U	H	O	U	H	O	U	H	H	Outstanding

LANDSCAPE CHARACTER AREA 3: INLAND SEA





Cymyran Bay



Inland Sea from Four Mile Bridge

Description

The area includes three landscape sub units. The Inland Sea, which separates Holy Island from Anglesey refers to a wide area of the Holy Island Strait impounded by the Stanley Embankment (built by Telford to carry the A5 road) to the north running down to Four Mile Bridge. This area is influenced by tidal currents which makes it popular for water sports and boat users. In more recent years the embankment has been widened to carry firstly the railway and now the A55 road to Holyhead. This has increased noise and movement in the area.

The southern part of the strait is more convoluted and in places narrow, providing a distinctive estuarine character at low tide with exposed sandbanks. To the north of the embankment the strait opens out to include Traeth y Gribin which forms a large sandy foreshore with limited rocky outcrops and includes the low tide channel of the Afon Alaw.

In many ways the landscape of the LCA forms part of the adjacent areas however it is such a strong feature locally that it justifies being a distinct LCA in its own right. Cross reference to Seascapes Regional Unit 10.

Key Issues

The main considerations within this LCA relate to the impacts of development, tourism, recreation and management proposals upon the range of coastal landscapes and habitats. Particular reference should be made to the differing qualities found throughout the LCA in terms of specifically the Inland Sea, the broad open estuary to the north of the Stanley Embankment and the more sinuous coastline to the south. Furthermore, it needs to be closely considered in relation to any proposals in adjacent LCAs given the particular qualities of the Inland Sea area.

- Have regard to the AONB Management Plan.

Landmap Aspect Area Matrix - LCA 3 Inland Sea													
Aspect Area	UID	AreaName	1	2	3	4	5	6	7	8	9	Overall Evaluation	
Geological Landscapes	YNSMNGLO02	Llanfechel	H	M	H	H						High	
	YNSMNGLO13	Ty-hen	L	L	L	L						Moderate	
	YNSMNGLO14	Penrhyn	L	L	M	M						Moderate	
	YNSMNGLO76	Alaw estuary	L	L	M	M						Moderate	
	YNSMNGLO95	Porth Delysn-Porth Swlan coast	H	M	H	H						High	
	YNSMNGLO19	Bodedern	M	M	M	M						Moderate	
	YNSMNGLO66	Tywyn Trwan Common	L	L	L	L						Low	
	YNSMNGLO72	Llanfairneubwll	L	L	L	L						Moderate	
	YNSMNGLO75	Valley	L	L	L	L						Moderate	
	YNSMNGLO94	Traeth y Gribin	H	M	H	M						High	
	YNSMNGLO111	Rhosneigr coast	H	H	M	M						High	
	YNSMNGLO88	Roscolyn	M	L	M	L						Moderate	
	YNSMNGLO73	Bryn-y-fryd	L	L	L	L						Moderate	
	YNSMNGLO84	Trearddur (Bay)	L	L	L	L						Moderate	
	YNSMNGLO85	Trearddur (S)	H	M	M	M						High	
	YNSMNGLO87	Gwynfryn	L	L	L	L						Moderate	
	YNSMNGLO90	Four Mile Bridge	M	L	L	L						Moderate	
	YNSMNGLO83	Trearddur (N)	M	L	M	M						Moderate	
	YNSMNGLO89	Penrhos	L	L	L	L						Moderate	
	YNSMNGLO93	Penrhos coast	H	M	H	H						High	
Landscape Habitats	YNSMNLH006	Farmland - West Anglesey	L	L	M	U	M	U	L	M		Moderate	
	YNSMNLH023	Rhostir Ty'n Mynydd	M	M	U	U	M	L	M	M		Moderate	
	YNSMNLH024	RAF Valley Airfields	H	H	M	U	U	H	H	M		Moderate	
	YNSMNLH029	Afon Alaw Saltmarsh	H	H	L	U	H	M	H	H		High	
	YNSMNLH055	Cymaran Bay	H	O	L	U	O	H	H	O		High	
	YNSMNLH062	W. of Holyhead	U	U	M	U	U	M	M	M		Moderate	
	YNSMNLH063	Inland Sea	H	O	L	U	H	M	H	H		High	
	YNSMNLH076	Coast Porth Penrhyn Mawr to Church Bay	H	H	L	U	H	H	M	M		High	
	YNSMNLH090	Valley	L	L	M	U	U	L	L	L		Low	
	YNSMNLH103	Farmland between Inland Sea and A5	L	L	M	U	M	M	L	M		Moderate	
	YNSMNLH105	Farmland - Trearddur to Holyhead	L	L	M	U	L	U	L	L		Low	
	YNSMNLH114	Coast - Porth Corgwl to Cymaran Bay	O	H	L	U	M	H	O	H		Outstanding	
	YNSMNLH122	Holyhead	L	L	M	U	U	L	L	L		Low	
	YNSMNLH123	Trearddur	L	L	M	U	U	L	L	M		Low	
	YNSMNLH125	Beddmanarch Bay	H	H	L	U	H	M	H	H		High	
	YNSMNLH132	Rhoscolyn Area	M	M	M	U	M	M	M	M		Moderate	
	YNSMNLH143	Coedydd Ysad Bodior	U	M	U	U	M	M	M	L		Moderate	
Visual & Sensory	YNSMNVSO07	Holy Island	H	M	H	M						High	
	YNSMNVSO08	North-west drumlins	M	H	M	L						Moderate	
	YNSMNVSO20	Caergeiliog craggy lowlands	M	M	M	L						Moderate	
	YNSMNVSO30	Holy Island straits	H	H	H	O						High	
	YNSMNVSO31	Inland Sea/Stanley Embankment	H	H	H	H						High	
	YNSMNVSO32	Penrhos Beach	H	M	H	M						High	
	YNSMNVSO33	Alaw Estuary	M	O	M	H						High	
	YNSMNVSO34	Northwest coast	H	H	M	M						High	
	YNSMNVSO64	Trearddur	L	L	H	M						Moderate	
	YNSMNVSO65	Valley & Newlands	L	L	L	L						Low	
	YNSMNVSO84	Aluminium Works	L	L	H	H						Low	
	YNSMNVSO85	Penrhos Coastal Park	M	M	M	M						Moderate	
	YNSMNVSO91	A55 corridor	L	L	M	L						Low	
Historic Landscapes	YNSMNLH006	A5 corridor and associated villages	O	O	H	O	H					Outstanding	
	YNSMNLH016	Fieldscape, central eastern Mon	O	O	M	O	H					Outstanding	
	YNSMNLH026	RAF Valley	H	H	H	O	O					Outstanding	
	YNSMNLH027	Rhoscolyn	H	H	H	H	M					High	
	YNSMNLH028	Trearddur Bay area	L	M	L	M	M					Moderate	
	YNSMNLH029	Penrhos	L	M	L	M	M					Moderate	
	YNSMNLH073	Penrhos Park	M	L	L	M	H					Moderate	
	YNSMNLH079	Internal Southern Anglesey	O	O	H	O	H					Outstanding	
Cultural Landscapes	YNSMNL001		U	O	O	H	O	H	H	H	M	Outstanding	
	YNSMNL005	Anglesey Aluminum	H	M	H	H	M	L	H	L	L	Outstanding	
	YNSMNL006	A5 Road	O	O	O	O	O	O	L	M	M	Outstanding	
	YNSMNL007	A5 Road Villages	H	M	M	U	H	H	M	M	M	Moderate	
	YNSMNL008	A55 road	H	M	L	L	M	L	L	H	M	High	
	YNSMNL009	Railway - Chester to Holyhead	H	O	O	O	O	M	H	H	O	Outstanding	
	YNSMNL011	Rhosneigr	U	M	M	U	H	M	U	M	H	High	
	YNSMNL019	Northern Coast	H	H	H	U	H	H	H	M	M	Outstanding	
	YNSMNL031	Sustrans Cycle Route	O	M	H	L	M	L	L	M	O	High	
	YNSMNL032	Trearddur Bay	H	H	M	U	H	H	M	M	M	High	
	YNSMNL034	South west coast	U	H	O	U	H	O	U	H	H	Outstanding	

LANDSCAPE CHARACTER AREA 4: NORTH WEST COAST



Description
<p>A relatively narrow LCA following the Anglesey coast from the Alaw estuary at Valley around the coast to the Bull Bay area. Inland the boundary follows the geological aspect area boundary reflecting the distinctive rocky nature of this section of coastline. Whilst this will be difficult to accurately define on the ground it recognises the often blurred nature of LCA boundaries and properly reflects the essence and character of the coast. Notwithstanding this a boundary has been identified which follows pathways, tracks and unclassified roads.</p> <p>From the Alaw estuary up to Carmel Head, the west facing coast is one of sandy bays and coves interspersed with rocky cliffs and headlands, particularly from Porth Trefadog northwards. Much of the underlying geology is formed by Pre Cambrian and Cambrian metamorphic rocks. From Carmel Head which rises up to 50 metres AOD eastwards is an area of coast with a more convoluted pattern. For most part it is rocky, with Cemaes Bay providing the only sandy beach. Cemlyn Bay provides a different character, with a brackish lagoon entrapped by a crescent shaped shingle beach.</p> <p>Much of the habitat displays its coastal character - intertidal, littoral, maritime and cliff slope - and much is designated for its nature conservation value eg: Clegir Mawr SSSI and Cemlyn Bay SSSI/SAC)</p> <p>A coastal path provides accessibility for most of the way giving a series of ever changing views. Much of the area is owned by the National Trust, particularly around Carmel Head. Despite the quiet, if exposed nature of the area there is much evidence of man's activities including quarries, brickworks and lime kilns. At Porthwen, the brickworks form a very distinctive remnant of this past although it is now showing signs of decay and disrepair. Perhaps the most conspicuous evidence of mans activities is the nuclear power station at Wylfa to the west of Cemaes. Cross reference to Regional Seascape Units 7 and 8.</p>
Key Issues
<p>Coastal Landscapes</p> <p>The area includes a range of cliffs and coves. Any development or management proposals should take into account:-</p> <ul style="list-style-type: none"> • Any direct or indirect impacts upon the range of habitat types. • Given its interrelationship with the AONB, any proposals must consider the impact upon people's perceptions of the character and quality of the coast. • Work closely with key landowners, such as the National Trust. • Have regard to the AONB Management Plan. <p>Habitat Management</p> <p>New development and management proposals should seek to:-</p> <ul style="list-style-type: none"> • Maintain high quality and distinctive habitats – coastal edge, mires, fens. • Develop and enhance the existing habitat and link with local Biodiversity Action Plan targets. <p>Settlement</p> <p>Although only a few settlements lie within the LCA, it is important that any development proposals should:-</p> <ul style="list-style-type: none"> • Be of a form and character that reflects each settlement. • Be considered within terms of cumulative impacts upon the wider landscape. • Integrate the development using land form, vegetation patterns etc. • Do not impose standard solutions. • Have regard to Cemaes Bay Conservation Area SPG.

Landmap Aspect Area Matrix - LCA 4 North-West Coast													
Aspect Area	UID	AreaName	1	2	3	4	5	6	7	8	9	Overall Evaluation	
Geological Landscapes	YNSMNGLO04	Llaneilian-Bodgadfa	L	L	M	M						Moderate	
	YNSMNGLO05	Amlwch	L	L	L	L						Moderate	
	YNSMNGLO06	Dinas Gynfor	M	M	H	M						High	
	YNSMNGLO07	Cemaes-Amlwch coast	O	O	O	O						Outstanding	
	YNSMNGLO02	Llanfechel	H	M	H	H						High	
	YNSMNGLO13	Ty-hen	L	L	L	L						Moderate	
	YNSMNGLO08	Cemlyn	H	M	H	M						High	
	YNSMNGLO07	Cemaes	L	L	L	L						Moderate	
	YNSMNGLO11	Mynydd y Garn	M	M	M	M						High	
	YNSMNGLO14	Penrhyn	L	L	M	M						Moderate	
	YNSMNGLO95	Porth Delysn-Porth Swlan coast	H	M	H	H						High	
	YNSMNGLO96	Carmel Head	O	O	O	O						Outstanding	
Landscape Habitats	YNSMNLH006	Farmland - West Anglesey	L	L	M	U	M	U	L	M		Moderate	
	YNSMNLH030	Mynydd Y Garn	M	M	M	U	M	M	M	M		Moderate	
	YNSMNLH031	Farmland - N. Anglesey	L	L	M	U	L	U	L	M		Low	
	YNSMNLH036	Plantation E. of Llyn-Y-Fydlyn	L	L	M	U	M	L	L	L		Low	
	YNSMNLH037	Bryn-rhwydd	M	M	U	U	M	M	M	M		Moderate	
	YNSMNLH038	Trwyn y Crwyn to Carmel Head	H	H	L	U	M	H	H	M		High	
	YNSMNLH039	Ysgubon Gader & Pant-yr-Eglwys	M	M	U	U	M	M	M	M		Moderate	
	YNSMNLH040	Acid Grassland at Carmel Head	U	M	U	U	M	M	M	U		Moderate	
	YNSMNLH042	Bracken - Llanleiana Head to Porth Wen	M	U	U	U	U	M	M	M		Moderate	
	YNSMNLH043	N.E. of Cemaes	M	U	U	U	U	U	M	M		Moderate	
	YNSMNLH050	Wylfa Power Station and surrounds	U	M	M	U	U	L	L	M		Low	
	YNSMNLH066	Coast - E. & W. of Cemlyn Bay	H	H	L	U	H	H	H	H		High	
	YNSMNLH076	Coast Porth Penrhyn Mawr to Church Bay	H	H	L	U	H	H	M	M		High	
	YNSMNLH078	Amlwch	L	L	M	U	U	L	L	M		Low	
	YNSMNLH080	Cemlyn Bay	O	O	L	U	O	M	O	O		Outstanding	
	YNSMNLH081	Heath N. of Church Bay	M	H	L	U	H	M	H	H		High	
	YNSMNLH083	Coast - Amlwch to Porth Wen	H	H	L	U	H	H	M	M		Moderate	
	YNSMNLH096	Farmland - N.W. Anglesey	L	L	M	U	L	U	L	M		Low	
	YNSMNLH118	Coast - Wylfa - Hell's Mouth	H	H	L	U	H	H	H	H		High	
	YNSMNLH119	Coast - Porth Penrhyn Mawr - Porth Wen	H	H	L	U	H	H	M	M		Moderate	
Visual & Sensory	YNSMNVSO02	Mynydd y Garn	H	O	H	H						High	
	YNSMNVSO08	North-west drumlins	M	H	M	L						Moderate	
	YNSMNVSO11	North coast hinterland	H	M	H	M						Moderate	
	YNSMNVSO34	Northwest coast	H	H	M	M						High	
	YNSMNVSO35	North coast	H	H	H	M						High	
	YNSMNVSO36	Cemlyn	H	H	O	O						Outstanding	
	YNSMNVSO60	Amlwch	L	L	H	M						Low	
	YNSMNVSO68	Cemaes	M	L	M	M						Moderate	
	YNSMNVSO86	Wylfa power station	L	L	H	H						Low	
Historic Landscapes	YNSMNLH016	Fieldscape, central eastern Mon	O	O	M	O	H					Outstanding	
	YNSMNLH050	Amlwch/Parys Mountain	O	O	M	O	O					Outstanding	
	YNSMNLH053	North coast, Mon	O	O	H	H	H					High	
	YNSMNLH054	Cemaes	H	H	H	O	H					High	
	YNSMNLH055	Wylfa	O	O	H	H	H					Outstanding	
	YNSMNLH056	Cemlyn coastal strip	H	M	H	M	M					Moderate	
	YNSMNLH057	Fieldscape, north-west Mon	H	H	H	M	U					High	
	YNSMNLH059	Mynydd y Garn	H	H	H	H	U					High	
	YNSMNLH071	Bull Bay area	M	M	M	M	M					Moderate	
Cultural Landscapes	YNSMNLH010	Wylfa Nuclear Power Station	H	L	M	H	H	M	H	L	L	Outstanding	
	YNSMNLH019	Northern Coast	H	H	H	U	H	H	H	M	M	Outstanding	
	YNSMNLH026	North east coast	H	H	O	U	O	H	H	H	H	Outstanding	
	YNSMNLH028	Cemaes	H	H	M	U	H	H	M	M	M	High	
	YNSMNLH033	Central Anglesey	U	H	H	U	H	H	H	H	H	High	

LANDSCAPE CHARACTER AREA 5: NORTH WEST ANGLESEY





Llynnon Mill and Mynydd Mechell

Description
<p>This new LCA includes the inland elements of LCA 2 defined in the 1999 LANDMAP study. It covers the north west of the island from Amlwch down to the A5/A55 corridor between Valley and Caergeiliog. The key feature of its character is the extensive drumlin field. This has resulted in the classic “basket of eggs” description for the landscape. The extent of this deposit is important in the Welsh context. The hillocks trend in a south west to north east direction and closely abut LCA 4 on the coast. In places they even run right down to the coastal edge. The drumlin has been formed from deposition of boulder clay following the retreat of the last ice age. They are underlain by a solid geology of old rocks ranging from Pre-Cambrian to Ordovician in age. Interspersed with this landform are a number of hard rocky features such as Mynydd y Garn and Mynydd Mechell.</p> <p>The majority of the landscape is characterised by improved grassland, especially in the drumlin field. However there are a number of marshy grasslands amongst the drumlins as well as small scattered areas of scrub. There are also extensive areas of scattered rocky outcrops associated with the Carreglefn quartzite deposits. Here dry ericaceous heath and acid grasslands are found, interspersed with low lying marshy areas. The LCA also contains the largest water body on the island, Llyn Alaw, which is a reservoir and of importance to breeding birds and wintering wildfowl. The Afon Alaw is associated with the Mabinogion, a legend central to Welsh culture.</p> <p>The western edge of the LCA is formed by the A5 corridor, which is a key element within the historic and cultural development of the island. The construction of this road by Telford, as a response to the need to improve links with Ireland, cemented the development of Holyhead as a major port. Another, more distinctive feature of the landscape is the development of wind farms, particularly to the north of Llyn Alaw. Ironically windmills have long been found on Anglesey and this interrelationship with wind energy continues.</p>
Key Issues
<p>Coastal Landscapes Abutting LCA 4, any development or management proposals should:-</p> <ul style="list-style-type: none"> • Have regard to the AONB Management Plan. <p>Settlement Edge Any proposals for development or landscape management should reflect:</p> <ul style="list-style-type: none"> • The development pattern of the area. • Seek to use landform, vegetation patterns to mitigate impacts. • Ensure scale, form and materials respect the local vernacular. • Utilise and retain local field boundary patterns – cloddiau, fences, hedgerows • Have regard to Cemaes Bay Conservation Area and Llanfechell Conservation Area SPGs. <p>Habitat Management Although a relatively intensely farmed area, there are a range of semi-natural habitats throughout the LCA. It includes Llyn Alaw which is an important biodiversity resource. Any development or management proposals should:-</p> <ul style="list-style-type: none"> • Provide for the management of semi-natural habitat features, including open water. • Develop and enhance network of sites and link to local BAP targets. <p>Energy Landscapes The area is characterised by a number of windfarms. In considering any further developments particular emphasis should be given to cumulative effects upon the landscape character.</p>

Landmap Aspect Area Matrix - LCA 5 North-West Anglesey												
Aspect Area	UID	AreaName	1	2	3	4	5	6	7	8	9	Overall Evaluation
Geological Landscapes	YNSMNGLO02	Llanfechel	H	M	H	H						High
	YNSMNGLO04	Llaneilian-Bodgadfa	L	L	M	M						Moderate
	YNSMNGLO05	Amlwch	L	L	L	L						Moderate
	YNSMNGLO06	Dinas Gynfor	M	M	H	M						High
	YNSMNGLO07	Cemaes	L	L	L	L						Moderate
	YNSMNGLO08	Cemlyn	H	M	H	M						High
	YNSMNGLO09	Mynydd Mechel	M	L	M	L						Moderate
	YNSMNGLO10	Afon Wygyr	L	L	M	M						Moderate
	YNSMNGLO11	Mynydd y Garn	M	M	M	M						High
	YNSMNGLO12	Tan-lan	M	L	L	L						Moderate
	YNSMNGLO13	Ty-hen	L	L	L	L						Moderate
	YNSMNGLO14	Penrhyn	L	L	M	M						Moderate
	YNSMNGLO15	Llanrhyddiad	L	L	M	L						Moderate
	YNSMNGLO16	Rhosgoch	L	L	L	L						Moderate
	YNSMNGLO17	Gwredog	L	L	L	M						Moderate
	YNSMNGLO18	Afon Alaw	L	L	L	L						Moderate
	YNSMNGLO19	Bodedern	M	M	M	M						Moderate
	YNSMNGLO20	Llanerchymedd	H	H	H	H						High
	YNSMNGLO66	Tywyn Trwan Common	L	L	L	L						Low
	YNSMNGLO71	Llyn Penrhyn-Llyn Trafwall	M	L	M	L						Moderate
	YNSMNGLO72	Llanfairyrneubwll	L	L	L	L						Moderate
	YNSMNGLO73	Bryn-y-fryd	L	L	L	L						Moderate
	YNSMNGLO74	Cleifiog Isaf	L	L	L	L						Moderate
	YNSMNGLO75	Valley	L	L	L	L						Moderate
	YNSMNGLO76	Alaw estuary	L	L	M	M						Moderate
	YNSMNGLO90	Four Mile Bridge	M	L	L	L						Moderate
	YNSMNGLO94	Traeth y Gribin	H	M	H	M						High
	YNSMNGLO95	Porth Delysn-Porth Swlan coast	H	M	H	H						High
Landscape Habitats	YNSMNGLO96	Carmel Head	O	O	O	O						Outstanding
	YNSMNGLO97	Cemaes-Amlwch coast	O	O	O	O						Outstanding
	YNSMNGLO113	Llyn Llygeirian	M	L	M	L						Moderate
	YNSMNGLO114	Bodnolwyn	M	M	M	M						Moderate
	YNSMNLH006	Farmland - West Anglesey	L	L	M	U	M	U	L	M		Moderate
	YNSMNLH008	Llyn Alaw	H	H	U	U	H	M	H	H		High
	YNSMNLH016	Valley Lakes	H	H	U	U	H	M	O	H		Outstanding
	YNSMNLH019	Mynydd Mechel	M	H	M	U	M	M	H	H		High
	YNSMNLH024	RAF Valley Airfields	H	H	M	U	U	H	H	M		Moderate
	YNSMNLH028	Cors-Y-Bol	H	H	L	U	H	L	H	U		Moderate
	YNSMNLH029	Afon Alaw Saltmarsh	H	H	L	U	H	M	H	H		High
	YNSMNLH030	Mynydd Y Garn	M	M	M	U	M	M	M	M		Moderate
	YNSMNLH031	Farmland - N. Anglesey	L	L	M	U	L	U	L	M		Low
	YNSMNLH037	Bryn-rhwydd	M	M	U	U	M	M	M	M		Moderate
	YNSMNLH041	Cae Gwyn	H	H	L	U	H	L	H	M		High
	YNSMNLH042	Bracken - Llanleiana Head to Porth Wen	M	U	U	U	U	M	M	M		Moderate
	YNSMNLH043	N.E. of Cemaes	M	U	U	U	U	U	M	M		Moderate
	YNSMNLH050	Wylfa Power Station and surrounds	U	M	M	U	U	L	L	M		Low
	YNSMNLH063	Inland Sea	H	O	L	U	H	M	H	H		High
	YNSMNLH066	Coast - E. & W. of Cemlyn Bay	H	H	L	U	H	H	H	H		High
	YNSMNLH076	Coast Porth Penrhyn Mawr to Church Bay	H	H	L	U	H	H	M	M		High
	YNSMNLH080	Cemlyn Bay	O	O	L	U	O	M	O	O		Outstanding
	YNSMNLH081	Heath N. of Church Bay	M	H	L	U	H	M	H	H		High
	YNSMNLH083	Coast - Amlwch to Porth Wen	H	H	L	U	H	H	M	M		Moderate
	YNSMNLH084	Farmland between old A5 and Railway line	L	L	M	U	L	U	L	M		Low
	YNSMNLH086	Llyn Llywenan	H	H	U	U	H	L	H	M		High
	YNSMNLH087	Llyn Garreg-lwyd	H	H	U	U	H	L	H	M		High
	YNSMNLH090	Valley	L	L	M	U	U	L	L	L		Low
	YNSMNLH093	Farmland E. of Llyn Alaw	L	L	M	U	U	U	L	M		Moderate
	YNSMNLH096	Farmland - N.W. Anglesey	L	L	M	U	L	U	L	M		Low
	YNSMNLH103	Farmland between Inland Sea and A5	L	L	M	U	M	M	L	M		Moderate
	YNSMNLH118	Coast - Wylfa - Hell's Mouth	H	H	L	U	H	H	H	H		High
	YNSMNLH119	Coast - Porth Penrhyn Mawr - Porth Wen	H	H	L	U	H	H	M	M		Moderate
	YNSMNLH125	Beddmanarch Bay	H	H	L	U	H	M	H	H		High
	YNSMNLH135	Llyn Llygeirian	H	H	U	U	H	L	H	M		High
	YNSMNLH136	Llyn Hafodol	H	H	U	U	H	L	H	M		High

Visual & Sensory	YNSMNV002	Mynydd y Garn	H	O	H	H							High
	YNSMNV008	North-west drumlins	M	H	M	L							Moderate
	YNSMNV009	Mynydd Mechell	H	H	H	H							High
	YNSMNV010	Drumlins with windfarms	L	L	H	H							Moderate
	YNSMNV011	North coast hinterland	H	M	H	M							Moderate
	YNSMNV012	Central smooth belt	M	H	L	L							Moderate
	YNSMNV020	Caergeiliog craggy lowlands	M	M	M	L							Moderate
	YNSMNV029	Llanfihangel lakes and dunes	M	M	H	H							Moderate
	YNSMNV035	North coast	H	H	H	M							High
	YNSMNV036	Cemlyn	H	H	O	O							Outstanding
	YNSMNV056	Llyn Alaw	M	M	M	M							Moderate
	YNSMNV065	Valley & Newlands	L	L	L	L							Low
	YNSMNV066	Llanfihangel yn Nhowyn	L	L	M	L							Low
	YNSMNV068	Cemaes	M	L	M	M							Moderate
	YNSMNV069	Llanfechell	M	L	L	M							Moderate
	YNSMNV071	Bodedern	L	L	L	M							Low
	YNSMNV086	Wylfa power station	L	L	H	H							Low
	YNSMNV091	A55 corridor	L	L	M	L							Low
Historic Landscapes	YNSMNL006	A5 corridor and associated villages	O	O	H	O	H						Outstanding
	YNSMNL016	Fieldscape, central eastern Mon	O	O	M	O	H						Outstanding
	YNSMNL026	RAF Valley	H	H	H	O	O						Outstanding
	YNSMNL029	Penrhos	L	M	L	M	M						Moderate
	YNSMNL032	Llanfachraeth	H	H	M	M	M						High
	YNSMNL033	Bodedern	H	O	H	H	M						High
	YNSMNL034	Presaddfed area	H	O	H	H	U						High
	YNSMNL035	Llanddeusant	H	H	H	H	H						High
	YNSMNL051	Penrhyd Lastra	M	H	M	M	M						Moderate
	YNSMNL052	Fieldscape, Rhosbeirio	M	H	H	H	U						High
	YNSMNL053	North coast, Mon	O	O	H	H	H						High
	YNSMNL054	Cemais	H	H	H	O	H						High
	YNSMNL055	Wylfa	O	O	H	H	H						Outstanding
	YNSMNL056	Cemlyn coastal strip	H	M	H	M	M						Moderate
	YNSMNL059	Mynydd y Garn	H	H	H	H	U						High
	YNSMNL072	Llanfechell	H	H	H	M	U						High
	YNSMNL074	Rhosybol	H	H	M	O	O						High
	YNSMNL079	Inland Southern Anglesey	O	O	H	O	H						Outstanding
Cultural Landscapes	YNSMNL006	A5 Road	O	O	O	O	O	O	L	M	M		Outstanding
	YNSMNL007	A5 Road Villages	H	M	M	U	H	H	M	M	M		Moderate
	YNSMNL008	A55 road	H	M	L	L	M	L	L	H	M		High
	YNSMNL009	Railway - Chester to Holyhead	H	O	O	O	O	M	H	H	O		Outstanding
	YNSMNL010	Wylfa Nuclear Power Station	H	L	M	H	H	M	H	L	L		Outstanding
	YNSMNL011	Rhosneigr	U	M	M	U	H	M	U	M	H		High
	YNSMNL012	Transport corridor area	H	M	H	U	H	H	H	M	M		High
	YNSMNL019	Northern Coast	H	H	H	U	H	H	H	M	M		Outstanding
	YNSMNL025	Llyn Alaw	U	L	L	U	M	L	M	M	H		Moderate
	YNSMNL026	North east coast	H	H	O	U	O	H	H	H	H		Outstanding
	YNSMNL028	Cemaes	H	H	M	U	H	H	M	M	M		High
	YNSMNL029	Valley airport	H	M	M	M	M	M	M	L	H		High
	YNSMNL031	Sustrans Cycle Route	O	M	H	L	M	L	L	M	O		High
	YNSMNL033	Central Anglesey	U	H	H	U	H	H	H	H	H		High

LANDSCAPE CHARACTER AREA 6: AMLWCH AND ENVIRONS





Amlwch environs from Mynydd Eilian



Amlwch Port



Amlwch near Port



Llaneilian church

Description
<p>This LCA is centred around the historic town of Amlwch and includes the northern coastline between Bull Bay and Point Lynas. It essentially lies within a broad, shallow valley extending down to the coastline. The town is one of several parts. The main historic town is inland, astride the A5025 road. Closer to the coast is an extensive area of disused chemical works, whilst the port fronts onto the coast. The port owes its development to the extensive mineral extraction in the 18th and 19th centuries at Parys Mountain inland. Again more modern windfarm development has been an increasing feature and like LCA 5, the juxtaposition of disused windmills to modern windfarms clearly reflects the importance of wind energy in this part of the island.</p> <p>Bull Bay is characterised by tourist developments, hotels and bed and breakfasts, as well as other tourism facilities such as the golf course. In both instances the settlement can be said to be utilitarian rather than picturesque, particularly Amlwch reflecting its industrial past. An important consideration is the inclusion of part of the LCA on the CCW/Cadw/ICOMOS Register of Landscape of Outstanding Historic Interest in Wales. Cross reference to Seascapes Regional Unit 7.</p>
Key Issues
<p>Settlement Edge</p> <p>Any development proposals affecting settlement edges should:-</p> <ul style="list-style-type: none"> • Be of a form and scale that reflects the character of the settlement. • Be considered in terms of cumulative effect on wider landscape rather than the site alone. • Seek to utilise landform and vegetation patterns to assist any mitigation impacts. • Avoid the use of standard solutions. • Have regard to Amlwch Conservation Area. <p>Historic Landscapes</p> <p>Amlwch contains a number of historic landscape elements associated with the copper industry and development of the town, reflected in its historic landscape designation. The port is also designated as a Conservation Area. All proposals for development and management should:-</p> <ul style="list-style-type: none"> • Respect the nature of the pattern and detail of the historic fabric of the landscape. • Ensure any direct or indirect impacts on both upstanding and buried remains (both known and unknown) are taken into account. This will include any impacts upon the landscape setting of any remain or feature. • Have regard for the Amlwch Port Conservation Area SPG. <p>Coastal Landscapes</p> <p>The area includes a variety of coastal landscape features. Any development or management proposals should take into account:</p> <ul style="list-style-type: none"> • Any direct or indirect effect upon habitats and landscapes. • Given its interrelationship with the AONB any proposals must consider the impact upon people's perceptions of the coast. • Have regard to the AONB Management Plan.

Landmap Aspect Area Matrix - LCA 6 Amlwch & Environs												
Aspect Area	UID	AreaName	1	2	3	4	5	6	7	8	9	Overall Evaluation
Geological Landscapes	YNSMNGLO01	Parys Mountain	O	O	O	O						Outstanding
	YNSMNGLO02	Llanfechel	H	M	H	H						High
	YNSMNGLO03	Mynydd Eilean	L	L	M	L						Moderate
	YNSMNGLO04	Llaneilian-Bodgadfa	L	L	M	M						Moderate
	YNSMNGLO05	Amlwch	L	L	L	L						Moderate
	YNSMNGLO09	Mynydd Mechel	M	L	M	L						Moderate
	YNSMNGLO10	Afon Wygyr	L	L	M	M						Moderate
	YNSMNGLO16	Rhosgoch	L	L	L	L						Moderate
	YNSMNGLO20	Llanerchymedd	H	H	H	H						High
	YNSMNGLO97	Cemaes-Amlwch coast	O	O	O	O						Outstanding
Landscape Habitats	YNSMNGLO98	Mynydd Eilean coast	M	L	M	L						Moderate
	YNSMNLH010	Parys Mountain (Heath around perimeter)	H	M	L	U	H	L	H	M		High
	YNSMNLH019	Mynydd Mechel	M	H	M	U	M	M	H	H		High
	YNSMNLH031	Farmland - N. Anglesey	L	L	M	U	L	U	L	M		Low
	YNSMNLH045	Bull Bay Golfcourse	L	M	M	U	U	L	M	L		Moderate
	YNSMNLH064	Coastal strip - Amlwch to Point Lynas	H	H	L	U	H	M	H	H		High
	YNSMNLH074	Coast - Dulas Bay - Amlwch	H	H	L	U	H	H	M	M		Moderate
	YNSMNLH078	Amlwch	L	L	M	U	U	L	L	M		Low
	YNSMNLH083	Coast - Amlwch to Porth Wen	H	H	L	U	H	H	M	M		Moderate
	YNSMNLH088	Pen-Y-Sarn	L	L	M	U	U	L	L	L		Low
	YNSMNLH093	Farmland E. of Llyn Alaw	L	L	M	U	U	U	L	M		Moderate
	YNSMNLH113	Farmland in N.W. Anglesey	M	M	M	U	M	M	M	U		Moderate
	YNSMNLH120	Traeth Dulas & Lligwy	H	H	L	U	H	M	M	U		Moderate
	YNSMNLH140	Mynydd Eilian	M	M	L	U	M	L	H	U		Moderate
Visual & Sensory	YNSMNVSO03	Mynydd Eilan	H	M	M	H						Moderate
	YNSMNVSO08	North-west drumlins	M	H	M	L						Moderate
	YNSMNVSO09	Mynydd Mechell	H	H	H	H						High
	YNSMNVSO10	Drumlins with windfarms	L	L	H	H						Moderate
	YNSMNVSO11	North coast hinterland	H	M	H	M						Moderate
	YNSMNVSO35	North coast	H	H	H	M						High
	YNSMNVSO60	Amlwch	L	L	H	M						Low
Historic Landscapes	YNSMNLH016	Fieldscape, central eastern Mon	O	O	M	O	H					Outstanding
	YNSMNLH046	Dulas	H	H	H	M	M					High
	YNSMNLH047	Fieldscape, Rhos y Mynach	H	M	M	H	M					Moderate
	YNSMNLH048	Llaneilian / Pengorffwysfa	H	H	H	H	H					High
	YNSMNLH050	Amlwch/Parys Mountain	O	O	M	O	O					Outstanding
	YNSMNLH051	Penrhyd Lastra	M	H	M	M	M					Moderate
	YNSMNLH052	Fieldscape, Rhosbeirio	M	H	H	H	U					High
	YNSMNLH053	North coast, Mon	O	O	H	H	H					High
	YNSMNLH058	Mynydd Mechell	H	H	H	H	M					High
	YNSMNLH071	Bull Bay area	M	M	M	M	M					Moderate
	YNSMNLH074	Rhosybol	H	H	M	O	O					High
Cultural Landscapes	YNSMNLCO18	Porth Amlwch, Amlwch, Parys mines	H	O	O	H	O	O	M	H	M	Outstanding
	YNSMNLCO26	North east coast	H	H	O	U	O	H	H	H	H	Outstanding
	YNSMNLCO33	Central Anglesey	U	H	H	U	H	H	H	H	H	High

LANDSCAPE CHARACTER AREA 7: PARYS MOUNTAIN





Parys Mountain



Description
<p>A unique, iconic landscape feature on Anglesey. In terms of landform, it forms a low but prominent ridge on a west south west – east north east orientation. Some 2kms long and 1km wide, rising to some 150 metres AOD, it forms a visually dominant feature within the more undulating surrounds. Geologically it is dominated by silicic igneous rocks (felsite) with extensive areas of mineralisation and slaty rocks. The result was that at its peak Parys Mountain was the largest copper mine in Britain. The mainly opencast method of extraction has left a “moonscape” of colourful outcrops impregnated with copper, lead and sulphur. This is interspersed with derelict pit headgear, settling ponds, tips and quarry faces. Much of the area is designated as a SSSI.</p> <p>The mine became an important cultural landscape feature, one of the sublime spectacles of its era visited by travellers and artists in search of contemporary aesthetic notions of the beautiful, picturesque or sublime. In more recent times it has provided a backdrop for films and science fiction programmes.</p> <p>In conjunction with Amlwch, Parys Mountain is included in the CCW/Cadw/ICOMOS Register of Landscape of Outstanding Historic Interest in Wales, reflecting the rich industrial legacy.</p>
Key Issues
<p>Historic Landscapes</p> <p>Parys Mountain is included on the Register of Landscapes of Outstanding Historic Importance in Wales. This reflects its rich industrial legacy associated with the copper industry. Given the sensitivity of the area it is important that any proposals take into account:-</p> <ul style="list-style-type: none"> • The nature and pattern of historic landscape fabric. • Any direct or indirect impacts upon upstanding or buried (known and unknown) remains, including mineral deposits. • The distinct habitats associated with the mineral extraction process. <p>Energy Landscapes</p> <p>The cumulative effect of windfarm developments upon the setting of the historic landscape must be taken into account. This will ensure that the particular form and character of the landscape will not be compromised.</p>

Landmap Aspect Area Matrix - LCA 7 Parys Mountain												
Aspect Area	UID	AreaName	1	2	3	4	5	6	7	8	9	Overall Evaluation
Geological Landscapes	YNSMNGLO01	Parys Mountain	O	O	O	O						Outstanding
	YNSMNGLO02	Llanfechel	H	M	H	H						High
	YNSMNGLO04	Llaneilian-Bodgadfa	L	L	M	M						Moderate
	YNSMNGLO20	Llanerchymedd	H	H	H	H						High
Landscape Habitats	YNSMNLH009	Mynydd Parys (Spoil)	U	O	L	U	U	L	H	O		High
	YNSMNLH010	Parys Mountain (Heath around perimeter)	H	M	L	U	H	L	H	M		High
	YNSMNLH031	Farmland - N. Anglesey	L	L	M	U	L	U	L	M		Low
	YNSMNLH088	Pen-Y-Sarn	L	L	M	U	U	L	L	L		Low
	YNSMNLH093	Farmland E. of Llyn Alaw	L	L	M	U	U	U	L	M		Moderate
	YNSMNLH106	Glan-y-Gors-Fawr	H	H	L	U	H	L	H	M		Moderate
	YNSMNLH113	Farmland in N.W. Anglesey	M	M	M	U	M	M	M	M		Moderate
	YNSMNVSO10	Drumlins with windfarms	L	L	H	H						Moderate
Visual & Sensory	YNSMNVSO87	Parys Mountain	O	L	O	O						Outstanding
	YNSMNLH016	Fieldscape, central eastern Mon	O	O	M	O	H					Outstanding
Historic Landscapes	YNSMNLH050	Amlwch/Parys Mountain	O	O	M	O	O					Outstanding
	YNSMNLH074	Rhosybol	H	H	M	O	O					High
	YNSMNLH018	Porth Amlwch, Amlwch, Parys mines	H	O	O	H	O	O	M	H	M	Outstanding
Cultural Landscapes	YNSMNL033	Central Anglesev	U	H	H	U	H	H	H	H	H	High

LANDSCAPE CHARACTER AREA 8: DULAS BAY HINTERLAND





Dulas Bay



Mynydd Bodafon

Description

The LCA is focused upon the sandy, shelving coastal landscape of Dulas Bay, where low tide exposes the extensive sandy beach of Traeth Dulas. As with much of this part of Anglesey, the landscape is gently undulating. The most prominent outcrop is Mynydd Bodafon. Formed by schists and quartzite pushing through the adjacent rocks, it rises to 178 metres AOD and forms the visual backdrop to the coastal landscape.

There are a number of woodland blocks and tree belts in the area that are closely associated with parkland developments such as Plas Lligwy, Llys Dulas and Parciau. Further inland are areas of relict landscape archaeology associated with the 19th century encroachment on common land, with a resultant clustered settlement pattern.

A range of habitats can be found, with the coastal zone providing an important inter tidal habitat around Traeth Dulas and Traeth Lligwy. Inland the landscape is one of improved grassland and in places arable land. Within this hedgerows and hedgebanks are common however other semi-natural vegetation, including woodlands, scrub and marshy grasslands, are mostly scattered and isolated. Cross reference to Seascapes Regional Unit 6.

Key Issues**Coastal Landscapes**

The coastline of the LCA is relatively unspoilt. It will be important that any management or development proposals take into account:-

- Any direct or consequential effects upon coastal and especially intertidal habitats.
- The impact upon the visual qualities of the LCA, particularly the coastal geomorphology.
- Have regard to the AONB Management Plan.

Habitat Management

New development and management proposals should seek to:-

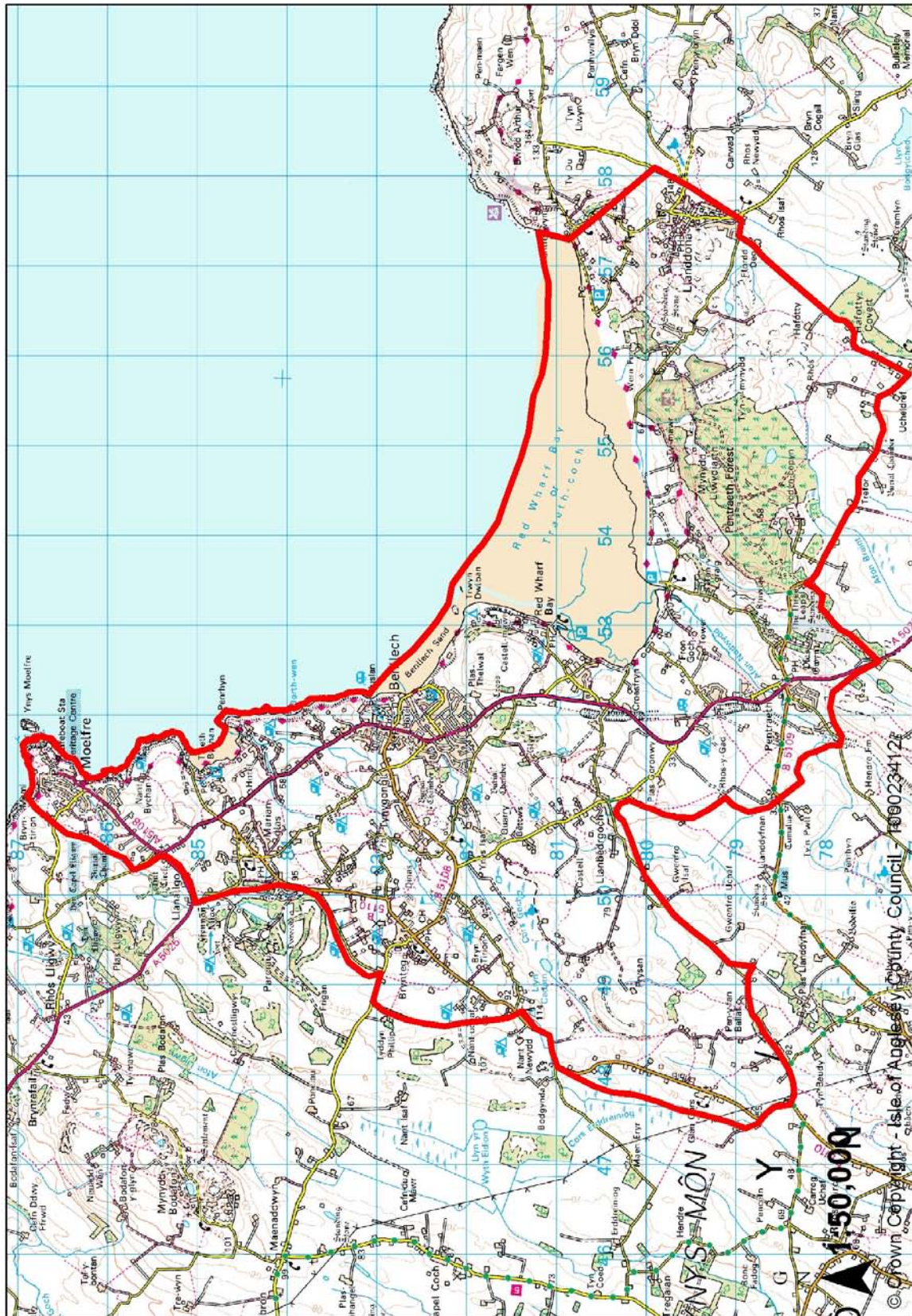
- Provide for the wider management of key habitats – woodlands, hedgerows, scrub and marshy grassland.
- Develop and enhance existing habitats and link with the local biodiversity action plan.

Parkland Landscapes

- Understanding the elements and characteristics within particular areas so as to ensure any management is properly focused.
- Management of vegetation patterns to retain distinctive nature of parklands.

Landmap Aspect Area Matrix - LCA 8 Dulas Bay Hinterland												
Aspect Area	UID	AreaName	1	2	3	4	5	6	7	8	9	Overall Evaluation
Geological Landscapes	YNSMNGLO02	Llanfechel	H	M	H	H						High
	YNSMNGLO03	Mynydd Eilean	L	L	M	L						Moderate
	YNSMNGLO04	Llaneilian-Bodgadfa	L	L	M	M						Moderate
	YNSMNGLO18	Afon Alaw	L	L	L	L						Moderate
	YNSMNGLO20	Llanerchymedd	H	H	H	H						High
	YNSMNGLO25	Afon Goch	L	L	L	L						Moderate
	YNSMNGLO26	Cae'r-mynydd	L	L	M	L						Moderate
	YNSMNGLO27	Mynydd Bodafon	H	M	M	M						High
	YNSMNGLO28	Capel Elena	L	L	L	L						Moderate
	YNSMNGLO29	Cors Erddreiniog	L	L	L	L						Moderate
	YNSMNGLO30	Benllech	H	H	H	M						High
	YNSMNGLO98	Mynydd Eilean coast	M	L	M	L						Moderate
	YNSMNGLO100	Dulas Bay	O	H	H	M						Outstanding
	YNSMNGLO101	Benllech Coast	O	H	H	M						Outstanding
Landscape Habitats	YNSMNGLO115	Tyddyn	L	L	L	L						Moderate
	YNSMNLH010	Parys Mountain (Heath around perimeter)	H	M	L	U	H	L	H	M		High
	YNSMNLH020	Cors Erddreiniog	O	H	L	U	H	M	O	O		Outstanding
	YNSMNLH027	Farmland - central Anglesey	L	M	M	U	M	U	L	M		Moderate
	YNSMNLH031	Farmland - N. Anglesey	L	L	M	U	L	U	L	M		Low
	YNSMNLH065	Mynydd Bodafon	H	M	L	U	H	L	H	M		High
	YNSMNLH088	Pen-Y-Sarn	L	L	M	U	U	L	L	L		Low
	YNSMNLH091	Coed Llysdulas	U	M	U	U	M	M	M	M		Moderate
	YNSMNLH093	Farmland E. of Llyn Alaw	L	L	M	U	U	U	L	M		Moderate
	YNSMNLH101	Farmland W. of Moelfre	L	L	M	U	U	M	L	H		Moderate
	YNSMNLH106	Glan-y-Gors-Fawr	H	H	L	U	H	L	H	M		Moderate
	YNSMNLH113	Farmland in N.W. Anglesey	M	M	M	U	M	M	M	M		Moderate
	YNSMNLH115	Farmland S.W. of Benllech	M	M	M	U	M	M	M	M		Moderate
	YNSMNLH120	Traeth Dulas & Lligwy	H	H	L	U	H	M	M	U		Moderate
	YNSMNLH141	Nant-y-Perfedd	H	H	U	U	M	L	H	H		High
	YNSMNLH142	Woodland N. of Brynteg	U	M	U	U	M	H	H	H		High
Visual & Sensory	YNSMNVSO03	Mynydd Eilan	H	M	M	H						Moderate
	YNSMNVSO04	Mynydd Bodafon	H	H	O	O						High
	YNSMNVSO08	North-west drumlins	M	H	M	L						Moderate
	YNSMNVSO10	Drumlins with windfarms	L	L	L	H	H					Moderate
	YNSMNVSO12	Central smooth belt	M	H	L	L						Moderate
	YNSMNVSO14	Benllech hinterland	H	M	M	M						Moderate
	YNSMNVSO37	East coast	H	H	H	M						High
	YNSMNVSO38	Traeth Dulas	H	H	H	H						High
Historic Landscapes	YNSMNLH016	Fieldscape, central eastern Mon	O	O	M	O	H					Outstanding
	YNSMNLH037	Fieldscape, Tre-Ysgawen	H	H	H	H	M					High
	YNSMNLH039	Capel Coch	H	H	M	H	U					High
	YNSMNLH040	Mynydd Bodafon	O	H	H	H	M					High
	YNSMNLH041	Cors Erddreiniog	M	L	M	L	H					Moderate
	YNSMNLH042	Parciau/Lligwy	O	O	H	O	H					Outstanding
	YNSMNLH043	Fieldscape, eastern Mon	H	H	M	H	U					High
	YNSMNLH045	Brynrefail	M	H	M	M	U					Moderate
	YNSMNLH046	Dulas	H	H	H	M	M					High
	YNSMNLH047	Fieldscape, Rhos y Mynach	H	M	M	H	M					Moderate
	YNSMNLH049	Penygraigwen / Gadfa	H	H	M	M	H					High
	YNSMNLH050	Amlwch/Parys Mountain	O	O	M	O	O					Outstanding
	YNSMNLH074	Rhosybol	H	H	M	O	O					High
Cultural Landscapes	YNSMNLH018	Porth Amlwch, Amlwch, Parys mines	H	O	O	H	O	O	M	H	M	Outstanding
	YNSMNLH026	North east coast	H	H	O	U	O	H	H	H	H	Outstanding
	YNSMNLH031	Sustrans Cycle Route	O	M	H	L	M	L	L	M	O	High
	YNSMNLH033	Central Anglesey	U	H	H	U	H	H	H	H	H	High

LANDSCAPE CHARACTER AREA 9: RED WHARF BAY





Red Wharf Bay and Llanddona



Moelfre



Red Wharf Bay

Description
<p>The LCA has been established around the broad, open sweeping Red Wharf Bay, with the inland boundaries based upon breaks of slope and edge of vista. It includes the historic settlement of Moelfre and the more modern, tourist based settlement at Benllech. In addition there are a number of caravan and camping sites which contribute to the areas character but are also visual detractors. The latter has a visual impact upon the character and quality of the area. The southern edge of the LCA is demarcated by Mynydd Llwydiarth. Formerly an unenclosed rocky outcrop, it has been subject to extensive conifer planting in the 20th Century and forms an important woodland block on the island. Other woodlands, primarily broadleaved, exist inland from Benllech and Pentraeth which both form distinctive landscape elements. Elsewhere areas of limestone pavement and associated habitats are found, as are areas of quarrying.</p> <p>Further inland the LCA abuts the rural, agricultural heartland of Anglesey, which is typified by mixed patterns of field sizes and settlement, and has a gently rolling land form. Within this, areas of wetland and mire exist.</p> <p>Although Benllech forms a substantial settlement in its own right, it is felt that the LCA reflects the influence of the coastline and sea upon the area, whereby landscape character is influenced by the consciousness of the sea and open sweeping vistas that subsume the development pattern. Cross reference to Seascapes Regional Unit 6.</p>
Key Issues
<p>Coastal Landscapes Ensure development and management proposals take into account:-</p> <ul style="list-style-type: none"> • Any direct or indirect impacts upon the range of coastal habitats. • Visual, direct and cumulative impacts upon essential characteristics of the LCA. In this instance the vast exposure of sand at low tide establishes the essential quality of the landscape. This will be especially important given the influence of Benllech and Moelfre upon the LCA. • Have regard to the AONB Management Plan. <p>Habitat Management New development and management proposals should seek to:-</p> <ul style="list-style-type: none"> • Ensure key habitats – broadleaved woodland, coastal features, limestone pavement are properly managed. • Develop and enhance existing habitats such as conifer plantations and link to Local Biodiversity Action Plan. <p>Settlement Edge Given the scale of Benllech and Moelfre any proposals for development or landscape management should:-</p> <ul style="list-style-type: none"> • Reflect the development pattern of the LCA. • Seek to use landform and vegetation patterns to mitigate impacts. • Ensure scale, form and materials respect the local vernacular. • Utilise and retain local boundary patterns. <p>Tourism Development The area has a number of caravan and camping sites. Consideration should be given to addressing their visual impact through sensitive boundary treatments and enhanced landscaping. Any new developments should also take into account the cumulative impact of such developments as identified in the coastal landscapes issue above.</p>

Landmap Aspect Area Matrix - LCA 9 Red Wharf Bay												
Aspect Area	UID	AreaName	1	2	3	4	5	6	7	8	9	Overall Evaluation
Geological Landscapes	YNSMNGLO29	Cors Erddeiniog	L	L	L	L						Moderate
	YNSMNGLO30	Benllech	H	H	H	M						High
	YNSMNGLO31	Cors Goch	M	L	L	L						Moderate
	YNSMNGLO35	Rhos-y-Gad	L	L	L	L						Moderate
	YNSMNGLO36	Llanddyfnam	L	M	M	L						Moderate
	YNSMNGLO37	Llyn Nodwydd	L	L	L	L						Moderate
	YNSMNGLO38	Rhiwlas	H	M	M	M						High
	YNSMNGLO39	Llanddona	L	L	L	L						Moderate
	YNSMNGLO41	Llansadwrn	O	O	O	O						Outstanding
	YNSMNGLO44	Afon Braint	L	L	L	L						Moderate
	YNSMNGLO46	Gaerwen-Newborough	L	L	L	L						Moderate
	YNSMNGLO56	Pentre Berw	L	L	L	L						Moderate
	YNSMNGLO63	Rhosmeirch	L	L	L	L						Moderate
Landscape Habitats	YNSMNLH01	Benllech Coast	O	H	H	M						Outstanding
	YNSMNLH102	Red Wharf Bay	O	H	H	M						Outstanding
	YNSMNLH103	Glan Halen	L	L	L	L						Moderate
	YNSMNLH021	Cors Goch	O	O	L	U	H	M	O	O		Outstanding
	YNSMNLH022	Cors Erddreiniod (south section)	O	H	L	U	H	M	O	U		Unassessed
	YNSMNLH027	Farmland - central Anglesey	L	M	M	U	M	U	L	M		Moderate
	YNSMNLH032	Red Wharf Bay sands	H	H	L	U	H	M	M	U		Moderate
	YNSMNLH034	Coastal strip - Penmon to Red Wharf	H	H	L	U	H	M	H	H		High
	YNSMNLH051	Coast - Penmon Point to Red Wharf Bay	O	H	L	U	H	H	O	M		High
	YNSMNLH071	Pentraeth Forest	L	L	M	U	M	M	M	H		High
	YNSMNLH072	Red Wharf Bay Salt-marsh	M	H	L	U	H	M	M	M		Moderate
	YNSMNLH095	Farmland N.W. of Menai Bridge	L	L	M	U	M	U	M	M		Moderate
	YNSMNLH100	Farmland N. of Beaumaris	L	L	M	U	M	U	L	M		Moderate
Visual & Sensory	YNSMNLH101	Farmland W. of Moelfre	L	L	M	U	U	M	L	H		Moderate
	YNSMNLH104	N. of Benllech	M	M	M	U	M	M	M	M		Moderate
	YNSMNLH115	Farmland S.W. of Benllech	M	M	M	U	M	M	M	M		Moderate
	YNSMNLH116	Surrounding Pentraeth Forest	M	M	M	U	M	M	M	H		Moderate
	YNSMNLH120	Traeth Dulas & Lligwy	H	H	L	U	H	M	M	U		Moderate
	YNSMNLH121	Coast - Traeth Benllech to Moelfre	H	H	L	U	H	H	M	M		Moderate
	YNSMNLH127	Benllech	L	L	M	U	U	L	L	L		Low
	YNSMNLH139	Gwenfro and Rhos-y-gad	H	H	L	U	H	M	O	H		Outstanding
	YNSMNLH142	Woodland N. of Brynteg	U	M	U	U	M	H	H	H		High
	YNSMNVSO05	Mynydd Llwydiarth	H	H	H	M						High
	YNSMNVSO06	Pentraeth Forest	M	H	H	H						High
	YNSMNVSO12	Central smooth belt	M	H	L	L						Moderate
	YNSMNVSO14	Benllech hinterland	H	M	M	M						Moderate
Historic Landscapes	YNSMNVSO22	Pentraeth valleys	M	H	M	L						Moderate
	YNSMNVSO37	East coast	H	H	H	M						High
	YNSMNVSO39	Red Wharf Bay	O	M	O	H						Outstanding
	YNSMNVSO73	Moelfre	M	L	M	M						Moderate
	YNSMNVSO74	Benllech	L	L	L	M						Low
	YNSMNVSO75	Pentraeth	M	M	L	M						Moderate
	YNSMNLH009	Fieldscape around Glan-yr-afon	O	H	H	U	H					Outstanding
	YNSMNLH011	Llanddona	O	H	H	O	H					Outstanding
	YNSMNLH012	Mynydd Llwydiarth	M	H	M	U	H					High
	YNSMNLH013	Fieldscape, Plas Gwyn	H	H	H	H	U					High
	YNSMNLH016	Fieldscape, central eastern Mon	O	O	M	O	H					Outstanding
	YNSMNLH037	Fieldscape, Tre-Ysgawen	H	H	H	H	M					High
	YNSMNLH041	Cors Erddreiniog	M	L	M	U	H					Moderate
Cultural Landscapes	YNSMNLH042	Parciau/Lligwy	O	O	H	O	H					Outstanding
	YNSMNLH043	Fieldscape, eastern Mon	H	H	M	H	U					High
	YNSMNLH044	Benllech	M	M	M	M	H					Moderate
	YNSMNLH061	Moelfre	H	H	H	H	M					High
	YNSMNLH070	Pentraeth	H	H	M	M	U					High
	YNSMNLH017	Benllech	H	M	M	U	H	H	M	M	H	Moderate
	YNSMNLH020	Pentraeth, Traeth Coch	H	H	H	U	H	H	U	H	M	Outstanding
	YNSMNLH021	Penmon, Llanddona	H	O	O	H	O	O	L	O	M	Outstanding
	YNSMNLH026	North east coast	H	H	O	U	O	H	H	H	H	Outstanding
	YNSMNLH027	Moelfre	U	M	H	M	U	M	U	M	M	High
Cultural Landscapes	YNSMNLH031	Sustrans Cycle Route	O	M	H	L	M	L	L	M	O	High
	YNSMNLH033	Central Anglesey	U	H	H	U	H	H	H	H	H	High

LANDSCAPE CHARACTER AREA 10: PENMON AND PUFFIN ISLAND





Old Quarry Workings, Penmon

Description
<p>An open exposed plateau and promontory on the south eastern edge of island. The highest point is Bwrdd Arthur (a hillfort), rising to 164 metres AOD, which is on a steeper scarp that falls gently to west and east. The area is essentially that part of the island underlain by carboniferous limestone. In the past this has been an important area for quarrying and this has carried on, with Dinmor Quarry supplying stone for the building of the A55. Inland the boundary is marked by the wooded, minor scarp overlooking Llangoed Vale.</p> <p>Historically and culturally the area includes some of the most important ecclesiastical sites on Anglesey and exhibits continuity of land use from pre-historic times through to today. The LCA includes the CCW/Cadw/ICOMOS Penmon Landscapes of Outstanding Historic Interest in Wales. Puffin Island (Ynys Seiriol) is included with the LCA for its geological, historic and cultural links. The island, together with the coastal zone exhibit a number of important habitats (designated an SSSI). Cross reference to Seascapes Regional Units 5 and 6.</p>
Key Issues
<p>Coastal Landscapes</p> <p>Any development or management proposals should take into account:-</p> <ul style="list-style-type: none"> • Direct or indirect impact upon relevant coastal habitats and landscapes, such as exposed headlands etc. • Ensure visual qualities - open, exposed - are properly considered in any proposals. • Have regard to the AONB Management Plan. <p>Historic Landscapes</p> <p>The area contains a number of important historic and cultural landscape elements including some of the most important ecclesiastical landscapes on Anglesey. It will be important to:-</p> <ul style="list-style-type: none"> • Respect the nature of the patterns and detail of the historic fabric of the landscape. • Take into account the objectiveness of its inclusion on the Register of Landscapes of Historic Importance. • Ensure any direct or indirect impacts upon both upstanding features and buried remains (known and unknown) are taken into account. This would include visual impacts upon the setting of historic landscapes, or disruption to their pattern and scale. <p>Habitat Management</p> <p>New development and management proposals should seek to:-</p> <ul style="list-style-type: none"> • Provide for the management of key habitats – limestone grasslands, coastal margins, cliffs, woodland. • Develop and enhance the existing habitats and link with the Local Biodiversity Action Plan. <p>Quarry Landscapes</p> <p>The area has a number of quarry sites, some still active. Whilst they offer potentials for restoration they also provide important refuge for wildlife and specific habitats. Any proposals for their future use should take these factors into account.</p>

Landmap Aspect Area Matrix - LCA 10 Penmon & Puffin Island												
Aspect Area	UID	AreaName	1	2	3	4	5	6	7	8	9	Overall Evaluation
Geological Landscapes	YNSMNGLO39	Llanddona	L	L	L	L						Moderate
	YNSMNGLO40	Penmon	O	M	H	M						Outstanding
	YNSMNGLO41	Llansadwrn	O	O	O	O						Outstanding
	YNSMNGLO42	Llangoed	L	L	L	L						Moderate
	YNSMNGLO103	Glan Halen	L	L	L	L						Moderate
	YNSMNGLO104	Dimnor Park coast	O	H	H	H						Outstanding
	YNSMNGLO105	Menai Straits (NE)	H	M	H	M						High
	YNSMNGLO112	Puffin Island	L	L	L	M						Moderate
Landscape Habitats	YNSMNLH011	Puffin Island	H	O	M	U	H	M	O	O		Outstanding
	YNSMNLH032	Red Wharf Bay sands	H	H	L	U	H	M	M	U		Moderate
	YNSMNLH034	Coastal strip - Penmon to Red Wharf	H	H	L	U	H	M	H	H		High
	YNSMNLH051	Coast - Penmon Point to Red Wharf Bay	O	H	L	U	H	H	O	M		High
	YNSMNLH052	Penmon Quarry	M	U	M	U	U	U	M	M		Moderate
	YNSMNLH072	Red Wharf Bay Salt-marsh	M	H	L	U	H	M	M	M		Moderate
	YNSMNLH100	Farmland N. of Beaumaris	L	L	M	U	M	U	L	M		Moderate
	YNSMNLH116	Surrounding Pentraeth Forest	M	M	M	U	M	M	M	H		Moderate
	YNSMNLH128	Bwrdd Arthur and Mariandrys	H	H	U	U	M	M	H	H		High
	YNSMNLH129	Menai Bridge to Penmon Point	O	O	L	U	H	H	O	H		Outstanding
Visual & Sensory	YNSMNVSO05	Mynydd Llwydiarth	H	H	H	M						High
	YNSMNVSO15	Penmon plateau	H	M	O	H						High
	YNSMNVSO16	Llangoed vale	H	M	M	M						Moderate
	YNSMNVSO17	Eastern smooth belt	M	H	L	L						Moderate
	YNSMNVSO39	Red Wharf Bay	O	M	O	H						Outstanding
	YNSMNVSO40	Penmon limestone coast	H	H	H	M						High
	YNSMNVSO41	Puffin Island	O	O	H	H						Outstanding
Historic Landscapes	YNSMNLH009	Fieldscape around Glan-yr-afon	O	H	H	U	H					Outstanding
	YNSMNLH010	Penmon	O	O	H	O	O					Outstanding
	YNSMNLH011	Llanddona	O	H	H	O	H					Outstanding
	YNSMNLH068	Ynys Seiriol	O	H	H	O	H					Outstanding
Cultural Landscapes	YNSMNLH020	Pentraeth, Traeth Coch	H	H	H	U	H	H	U	H	M	Outstanding
	YNSMNLH021	Penmon, Llanddona	H	O	O	H	O	O	L	O	M	Outstanding
	YNSMNLH021	Penmon, Llanddona	H	O	O	H	O	O	L	O	M	Outstanding

LANDSCAPE CHARACTER AREA 11: EASTERN MENAI STRAIT





Beaumaris



Bridgehead Area

Description

The eastern section of the Menai Strait, extends from Menai Bridge to Beaumaris and this LCA forms a distinct landscape unit. Its inland boundary is formed by the break of slope, before the main plateau area of Anglesey is reached. The area is typified by wooded flanks along the Menai Strait which form a significant landscape resource and nature conservation resource. Further inland, the area is more characterised by areas of improved agricultural land interspersed with areas of scattered semi-natural vegetation. The inter-tidal zone is also a significant nature conservation resource and has been included within the proposed Marine Nature Reserve.

The settlements along the coast exhibit varying qualities and character although traffic and more modern development have affected their character. Menai Bridge is closely related to the construction of Telford's Bridge and the A5 road across Anglesey. Conversely Llanfair PG was tied in with the Chester – Holyhead railway in the mid 19th century. Beaumaris is one of the primary historic sites on the island, being one of King Edward's castle sites built in the 14th century and is part of a World Heritage Site, with the resultant forced movement of local inhabitants to Newborough (see LCA 14). The town is also designated as a Conservation Area. The eastern part of the LCA lies within the CCW/Cadw/ICOMOS Penmon Landscape of Outstanding Historic Interest in Wales. It includes the deer park (one of three on the island) built in the early 18th century which is associated with the Bulkeley family, one of the most important families on the island (see aspect area CL021).

An important consideration of the LCA is its close visual interrelationship with the mainland and the borrowed views towards Snowdonia from the A545. In many ways the Menai Strait forms a distinct landscape unit which seems separate and divorced from the rest of the island. However it does establish the initial visual appreciation of Anglesey for visitors and travellers. Cross reference to Seascapes Regional Unit 12.

Key Issues

Coastal Landscapes

Development and management proposals should take into account:-

- Visual, direct and cumulative impacts upon the essential qualities of the LCA.
- Any direct or indirect impacts upon the range of coastal habitats which interface with the Menai Strait SAC.
- The interrelationship with the AONB is important to consider given perception of the landscape.
- Have regard to the AONB Management Plan.

Historic Landscapes

The LCA contains the distinctive town of Beaumaris. It will be important to:-

- Respect the nature of the patterns and detail of the fabric of the landscape, such as the setting of the Castle, and the immediate coastal edge of the town.
- Take into account the objectives of its inclusion on the Register of Landscapes of Historic Importance.
- Ensure any direct or indirect impacts upon both upstanding features and buried remains (known and unknown) are taken into account. This would include visual impacts upon the setting of historic landscapes, or disruption to their pattern and scale.
- Have regard to the Edward Castles World Heritage Site Management Plan.
- Have regard to the Beaumaris Conservation Area and Menai Bridge Conservation Area SPGs.

Transportation Corridors

Views to the LCA from the A5 and A55 bridges across the Menai Strait as well as more long distance views across Lavan Sands from the A55 road corridor on the mainland. It is

important that any proposals should consider the:-

- Perception of island's landscape from key road corridors.
- Ensuring mitigation measures reflect the wider landscape structure and setting and not considered in isolation.
- Key landscape features include Beaumaris and the castle. Impacts on their settings should be considered.
- The Isle of Anglesey County Council should work closely with Gwynedd Council to ensure that development on either side of the Strait does not impact upon the LCA.

Habitat Management

New development and management proposals should seek to:-

- Provide for the management of the key habitats – broadleaved woodlands, coastal edge.
- Develop and enhance existing habitats and link with the Local Biodiversity Action Plan.
- Protect woodland slopes from future development.

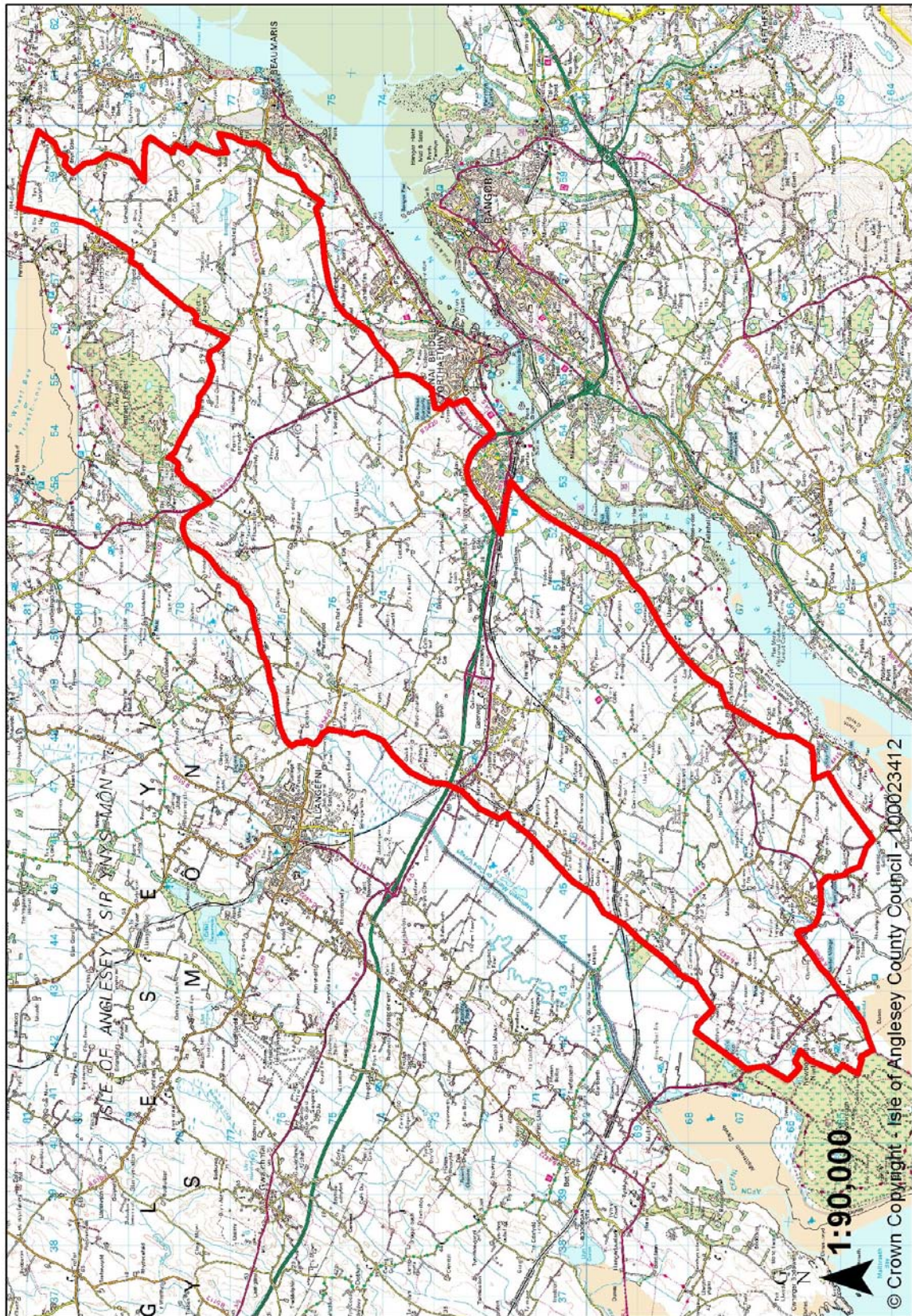
Settlement Edge

Development around settlement edges should:-

- Be of a form and character appropriate to each settlement.
- Be considered in terms of impacts upon the wider landscape, rather than the site above.
- Seek to integrate using landform, vegetation etc to minimise impacts.
- Ensure that standard solutions are not used so that the inherent characteristics of the area are contained within the design.
- Not impact on woodland setting.

Landmap Aspect Area Matrix - LCA 11 Eastern Menai Strait												
Aspect Area	UID	AreaName	1	2	3	4	5	6	7	8	9	Overall Evaluation
Geological Landscapes	YNSMNGLO40	Penmon	O	M	H	M						Outstanding
	YNSMNGLO41	Llansadwrn	O	O	O	O						Outstanding
	YNSMNGLO42	Llangoed	L	L	L	L						Moderate
	YNSMNGLO43	Afon Cadnant	L	L	L	L						Moderate
	YNSMNGLO44	Afon Braint	L	L	L	L						Moderate
	YNSMNGLO5	Menai Straits (NE)	H	M	H	M						High
Landscape Habitats	YNSMNLH052	Penmon Quarry	M	U	M	U	U	U	M	M		Moderate
	YNSMNLH053	Llandegfan - Beaumaris	M	M	M	U	M	M	M	H		Moderate
	YNSMNLH060	Farmland S.E. of Malltraeth Marsh	L	L	M	U	M	M	L	M		Moderate
	YNSMNLH061	Menai Bridge	L	L	M	U	U	L	L	M		Low
	YNSMNLH075	Woodland - Beaumaris - Menai Bridge	U	M	U	U	M	U	H	H		High
	YNSMNLH095	Farmland N.W. of Menai Bridge	L	L	M	U	M	U	M	M		Moderate
	YNSMNLH100	Farmland N. of Beaumaris	L	L	M	U	M	U	L	M		Moderate
	YNSMNLH128	Bwrdd Arthur and Mariandrys	H	H	U	U	M	M	H	H		High
	YNSMNLH129	Menai Bridge to Penmon Point	O	O	L	U	H	H	O	H		Outstanding
	YNSMNLH133	Traeth Abermenai to Menai Bridge	O	O	L	U	H	H	O	H		Outstanding
	YNSMNLH134	Beaumaris	L	L	M	U	U	L	L	L		Low
	YNSMNLH138	Llanfair PG	L	L	M	U	U	L	L	L		Low
	YNSMNLH144	Baron Hill Park	H	H	U	U	H	U	H	H		High
Visual & Sensory	YNSMNVSO15	Penmon plateau	H	M	O	H						High
	YNSMNVSO16	Llangoed vale	H	M	M	M						Moderate
	YNSMNVSO17	Eastern smooth belt	M	H	L	L						Moderate
	YNSMNVSO24	Cwm Cadnant	H	H	H	H						High
	YNSMNVSO25	Beaumaris wooded slopes	H	H	H	H						High
	YNSMNVSO26	Menai Straits slopes - south	H	H	H	H						High
	YNSMNVSO42	Menai Straits north	M	H	H	H						High
	YNSMNVSO43	Menai Straits - mid section	H	H	O	O						Outstanding
	YNSMNVSO61	Menai Bridge	H	M	H	M						High
	YNSMNVSO62	Llanfair Pwllgwyngyll	L	L	L	L						Low
	YNSMNVSO63	Beaumaris	O	H	O	H						Outstanding
	YNSMNVSO76	Llangoed	M	L	M	M						Moderate
	YNSMNVSO77	Llandegfan	L	L	L	M						Low
	YNSMNVSO91	A55 corridor	L	L	M	L						Low
Historic Landscapes	YNSMNVSO93	Menai Straits slopes - north	H	M	H	H						High
	YNSMNLH006	A5 corridor and associated villages	O	O	H	O	H					Outstanding
	YNSMNLH007	Coastline around Llandegfan	O	O	H	O	M					Outstanding
	YNSMNLH008	Beaumaris	O	O	O	O	H					Outstanding
	YNSMNLH009	Fieldscape around Glan-yr-afon	O	H	H	U	H					Outstanding
	YNSMNLH010	Penmon	O	O	H	O	O					Outstanding
	YNSMNLH016	Fieldscape, central eastern Mon	O	O	M	O	H					Outstanding
	YNSMNLH066	Menai Bridge	O	O	H	O	H					Outstanding
	YNSMNLH067	Fieldscape around Llanfaes	O	H	H	O	H					Outstanding
	YNSMNLH069	Llangoed	H	H	H	O	O					Outstanding
Cultural Landscapes	YNSMNLCO06	A5 Road	O	O	O	O	O	L	M	M		Outstanding
	YNSMNLCO07	A5 Road Villages	H	M	M	U	H	H	M	M	M	Moderate
	YNSMNLCO08	A55 road	H	M	L	L	M	L	L	H	M	High
	YNSMNLCO09	Railway - Chester to Holyhead	H	O	O	O	O	M	H	H	O	Outstanding
	YNSMNLCO21	Penmon, Llanddona	H	O	O	H	O	O	L	O	M	Outstanding
	YNSMNLCO22	Beaumaris	H	O	O	U	O	O	L	H	L	Outstanding
	YNSMNLCO23	Menai Bridge	H	H	H	U	O	H	M	M	M	Outstanding
	YNSMNLCO30	Southern Anglesey Coast - Llandegfan	H	H	H	H	O	H	U	H	M	Outstanding
	YNSMNLCO31	Sustrans Cycle Route	O	M	H	L	M	L	L	M	O	High
	YNSMNLCO33	Central Anglesey	U	H	H	U	H	H	H	H	H	High
	YNSMNLCO35	Plas Newydd, Plas Llanidan	H	O	O	U	O	O	M	M	H	Outstanding

LANDSCAPE CHARACTER AREA 12: EAST CENTRAL ANGLESEY



© Crown Copyright - Isle of Anglesey County Council - 100023412



Brynsiencyn



Brynsiencyn Church

Description

The LCA forms the inland buffer zone to the Menai Strait and reflects much of the typical, undulating landscape of Anglesey. The majority of the area consists of improved grassland interspersed with scattered areas of semi-natural habitat. In places hedgerows and hedgebanks form field boundaries and where rock outcrops exist stone walls are more typically field boundaries.

The underlying geology is varied with glacial deposits in the east to more mixed intrusive and sedimentary features in the west. The western boundary of the LCA is formed by the A5 trunk road, now superseded by the A55 trunk road, which runs relatively parallel. Impacts upon the landscape are localised and varied. Likewise cultural and historic influences vary, which is typical of the island. Settlements vary from nucleated to dispersed patterns. Of particular importance is Penmynydd which was the ancestral home of the Tudor family who eventually ascended to the English throne and Llys Rhosyr, one of the sites of Llewelyn's courts.

Key Issues

Coastal Landscapes

- Have regard to the AONB Management Plan.

Settlement Edge

Development around settlement edges should:-

- Be of a form and character appropriate to each settlement.
- Be considered in terms of impacts upon the wider landscape, rather than the site itself.
- Seek to integrate using landform, vegetation etc to minimise impacts.
- Ensure that standard solutions are not used in order that the inherent characteristics of the area are contained within the design.

Transportation Corridors

New development and management should ensure that:-

- Visual impacts from and to main road/rail corridors are properly considered eg: A55/A5.
- Mitigation measures reflect the wider landscape structure and that sites are not considered in isolation.
- LCA forms part of gateway into Anglesey, and it is important that the underlying character and quality are properly reflected.
- The Isle of Anglesey County Council should work closely with Gwynedd Council to ensure that development on either side of the Strait does not impact upon the LCA.

Habitat Management

Notwithstanding the character of the area every effort should be made to:

- Ensure key habitat elements – hedgerows, hedgebanks and trees are properly managed.
- Develop and enhance some natural habitat features and link with Local Biodiversity Action Plan.

Landmap Aspect Area Matrix - LCA 12 East Central Anglesey												
Aspect Area	UID	AreaName	1	2	3	4	5	6	7	8	9	Overall Evaluation
Geological Landscapes	YNSMNGLO30	Benllech	H	H	H	M						High
	YNSMNGLO32	Cors Bodeilto	L	L	L	L						Moderate
	YNSMNGLO33	Afon Ceint	L	L	L	L						Moderate
	YNSMNGLO34	Maltraeth Marsh	M	H	H	M						High
	YNSMNGLO36	Llanddyfnam	L	M	M	L						Moderate
	YNSMNGLO38	Rhiwlas	H	M	M	M						High
	YNSMNGLO39	Llanddona	L	L	L	L						Moderate
	YNSMNGLO40	Penmon	O	M	H	M						Outstanding
	YNSMNGLO41	Llansadwrn	O	O	O	O						Outstanding
	YNSMNGLO42	Llangoed	L	L	L	L						Moderate
	YNSMNGLO43	Afon Cadnant	L	L	L	L						Moderate
	YNSMNGLO44	Afon Braint	L	L	L	L						Moderate
	YNSMNGLO45	Nant-gwag	L	L	M	L						Moderate
	YNSMNGLO46	Gaerwen-Newborough	L	L	L	L						Moderate
	YNSMNGLO47	Llandaniel Fab	L	L	L	L						Moderate
	YNSMNGLO48	Brynsiencyn	L	L	L	L						Moderate
	YNSMNGLO49	Penrhyn (Abermenai)	L	L	L	L						Moderate
	YNSMNGLO50	Newborough Warren	O	H	H	H						Outstanding
	YNSMNGLO51	Newborough Forest	L	M	L	M						Low
	YNSMNGLO56	Pentre Berw	L	L	L	L						Moderate
	YNSMNGLO57	Hirde-Faig	L	L	L	L						Moderate
Landscape Habitats	YNSMNLH005	Newborough Sand Dunes	O	O	L	U	U	H	O	O		Outstanding
	YNSMNLH027	Farmland - central Anglesey	L	M	M	U	M	U	L	M		Moderate
	YNSMNLH044	Newborough Forest	H	O	M	U	U	H	H	O		Outstanding
	YNSMNLH046	W. of Llandaniel Fab	L	U	M	U	L	U	L	M		Low
	YNSMNLH053	Llandegfan - Beaumaris	M	M	M	U	M	M	M	H		Moderate
	YNSMNLH059	Malltraeth Marsh (imp. grass)	H	H	M	U	H	H	H	H		High
	YNSMNLH060	Farmland S.E. of Malltraeth Marsh	L	L	M	U	M	M	L	M		Moderate
	YNSMNLH061	Menai Bridge	L	L	M	U	U	L	L	M		Low
	YNSMNLH067	Woodland S.W. of Llanfair PG	U	M	U	U	M	H	M	M		Moderate
	YNSMNLH073	Cors Bodeilio	O	H	L	U	H	M	O	H		Outstanding
	YNSMNLH075	Woodland - Beaumaris - Menai Bridge	U	M	U	U	M	H	H	H		High
	YNSMNLH095	Farmland N.W. of Menai Bridge	L	L	M	U	M	U	M	M		Moderate
	YNSMNLH100	Farmland N. of Beaumaris	L	L	M	U	M	U	L	M		Moderate
	YNSMNLH111	Arable land S. of Gaerwen	L	U	M	U	L	U	L	L		Low
	YNSMNLH116	Surrounding Pentraeth Forest	M	M	M	U	M	M	M	H		Moderate
	YNSMNLH128	Bwrdd Arthur and Mariandrys	H	H	U	U	M	M	H	H		High
	YNSMNLH138	Llanfair PG	L	L	M	U	U	L	L	L		Low
Visual & Sensory	YNSMNVSO05	Mynydd Llwydiarth	H	H	H	M						High
	YNSMNVSO12	Central smooth belt	M	H	L	L						Moderate
	YNSMNVSO16	Llangoed vale	H	M	M	M						Moderate
	YNSMNVSO17	Eastern smooth belt	M	H	L	L						Moderate
	YNSMNVSO18	South-west ridges	M	H	M	L						Moderate
	YNSMNVSO21	Abermenai lowlands	M	H	M	M						Moderate
	YNSMNVSO22	Pentraeth valleys	M	H	M	L						Moderate
	YNSMNVSO25	Beaumaris wooded slopes	H	H	H	H						High
	YNSMNVSO27	Malltraeth Marsh south slopes	M	H	M	M						Moderate
	YNSMNVSO28	Malltraeth Marsh	L	H	H	H						Moderate
	YNSMNVSO61	Menai Bridge	H	M	H	M						High
	YNSMNVSO78	Gaerwen	L	L	L	M						Low
	YNSMNVSO79	Brynseincyn	L	L	L	M						Low
	YNSMNVSO80	Dwyran	L	L	L	M						Low
	YNSMNVSO81	Newborough	L	M	M	H						Moderate
	YNSMNVSO91	A55 corridor	L	L	M	L						Low

Historic Landscapes	YNSMNL002	Fieldscape around Quirt	H	H	H	H	H					High
	YNSMNL003	Fieldscape north of Newborough	H	H	H	O	H					High
	YNSMNL004	South Anglesey parkland	O	O	H	O	M					Outstanding
	YNSMNL005	Fieldscape south of Malltraeth	M	H	M	M	M					Moderate
	YNSMNL006	A5 corridor and associated villages	O	O	H	O	H					Outstanding
	YNSMNL009	Fieldscape around Glan-yr-afon	O	H	H	U	H					Outstanding
	YNSMNL012	Mynydd Llwydiarth	M	H	M	U	H					High
	YNSMNL013	Fieldscape, Plas Gwyn	H	H	H	H	U					High
	YNSMNL016	Fieldscape, central eastern Mon	O	O	M	O	H					Outstanding
	YNSMNL018	Malltraeth Marsh	O	H	M	O	H					Outstanding
	YNSMNL063	Dwyran	H	H	M	H	M					High
	YNSMNL064	Newborough	O	O	H	O	O					Outstanding
	YNSMNL065	Brynsiencyn	H	O	M	H	M					High
	YNSMNL066	Menai Bridge	O	O	H	O	H					Outstanding
Cultural Landscapes	YNSMNL067	Fieldscape around Llanfaes	O	H	H	O	H					Outstanding
	YNSMNL006	A5 Road	O	O	O	O	O	L	M	M		Outstanding
	YNSMNL007	A5 Road Villages	H	M	M	U	H	H	M	M	M	Moderate
	YNSMNL008	A55 road	H	M	L	L	M	L	L	H	M	High
	YNSMNL009	Railway - Chester to Holyhead	H	O	O	O	O	M	H	H	O	Outstanding
	YNSMNL012	Transport corridor area	H	M	H	U	H	H	H	M	M	High
	YNSMNL013	Newborough forest, Llanddwyn	U	H	H	U	O	H	U	O	M	Outstanding
	YNSMNL014	Newborough - Llys Rhosyr	M	O	O	H	O	O	L	M	H	Outstanding
	YNSMNL021	Penmon, Llanddona	H	O	O	H	O	O	L	O	M	Outstanding
	YNSMNL030	Southern Anglesey Coast - Llandegfan	H	H	H	H	O	H	U	H	M	Outstanding
	YNSMNL031	Sustrans Cycle Route	O	M	H	L	M	L	L	M	O	High
	YNSMNL033	Central Anglesey	U	H	H	U	H	H	H	H	H	High
	YNSMNL034	South west coast	U	H	O	U	H	O	U	H	H	Outstanding
	YNSMNL035	Plas Newydd, Plas Llanidan	H	O	O	U	O	O	M	M	H	Outstanding

LANDSCAPE CHARACTER AREA 13: WESTERN MENAI STRAIT





Menai Strait



Stepping Stones, Brynsiencyn

Description
<p>The western section of the Menai Strait reflects much of the character of LCA11, with the inland boundary being formed where the valley slopes abut the raised, inland plateau area. However, the main difference is that the area is of a more rural nature. There are a number of small settlements such as Brynsiencyn and Cefn Bach, but these settlements are nowhere near the density found on the eastern section of the Strait. Consequently, a more open, rural character can be found, with the majority of the coastal fringe being a relatively flat, open landscape.</p> <p>The eastern section of the LCA is more wooded and includes the important parkland landscape at Plas Newydd. Although the coastal fringe opens out towards the sea, the whole inter-tidal zone is of considerable nature conservation importance within the Menai Strait Special Area of Conservation.</p> <p>Views across to the mainland are important, but perhaps as important are views obtained of the island from the mainland from the A487 between Caernarfon and Bangor. The A487 is one of the primary roads from the south and the views and vistas present an important image of the island to visitors and travellers.</p> <p>Inland the area is characterised by improved agricultural land, with areas of scattered semi-natural habitat including woodlands and hedgerows. In addition to the historic and cultural value of Plas Newydd, the seat of the Marquis of Anglesey and now owned by the National Trust, the area around Brynsiencyn exhibits a number of important late – prehistoric landscape archaeology. Brynsiencyn itself represents a distinct settlement unit established in the 19th century for workers in the Dinorwic quarries on the mainland. Culturally Plas Llanidan has important links to the revival of druidism in the late 18th and early 19th centuries, and the consequent revival of the eisteddfod movement. Cross reference to Seascapes Regional Unit 12.</p>
Key Issues
<p>Coastal Landscapes</p> <p>The coastline of the LCA is relatively unspoilt. It will be important that any management or development proposals take into account:-</p> <ul style="list-style-type: none"> • Any direct or consequential effects upon coastal and especially intertidal habitats. • The impact upon the visual qualities of the LCA, particularly the coastal geomorphology. • Work closely with key landowners such as the National Trust. • Importance of the interrelationship with the AONB and of perceptions of the landscape. <p>Transportation Corridors</p> <p>Eastern end of LCA forms gateway onto the island, with views from the A5/A55 and A487 on the mainland. It is important that any proposals should consider:-</p> <ul style="list-style-type: none"> • The perception of island's landscape from key road corridors. • Ensuring mitigation measures reflect the wider landscape structure and setting and not considered in isolation. • Key landscape features include Plas Newydd, former seat of the Marquis of Anglesey now owned by the National Trust. Impact on its setting should be considered. • The Isle of Anglesey County Council should work closely with Gwynedd Council to ensure that development on either side of the Strait does not impact upon the LCA. <p>Habitat Management</p> <p>New development and management proposals should seek to:-</p> <ul style="list-style-type: none"> • Provide for the management of the key habitats – broadleaved woodlands, coastal edge. • Develop and enhance existing habitats and link with the Local Biodiversity Action Plan.

Historic Landscapes

The LCA contains a number of important historic and cultural landscape elements, such as Brynsiencyn and Plas Llanidan. It is important that any proposals:-

- Respect the nature of the patterns and details of the landscape.
- Ensure any direct or indirect impacts upon both upstanding features and buried remains (known and unknown) are taken into account. This would include visual impacts upon the setting of historic landscapes, or disruption to their pattern and scale.

Landmap Aspect Area Matrix - LCA 13 Western Menai Strait												
Aspect Area	UID	AreaName	1	2	3	4	5	6	7	8	9	Overall Evaluation
Geological Landscapes	YNSMNGLO41	Llansadwrn	O	O	O	O						Outstanding
	YNSMNGLO48	Brynsiencyn	L	L	L	L						Moderate
	YNSMNGLO49	Penrhyn (Abermenai)	L	L	L	L						Moderate
	YNSMNGLO105	Menai Straits (NE)	H	M	H	M						High
	YNSMNGLO106	Menai Straits (SW)	H	M	M	M						High
Landscape Habitats	YNSMNLH060	Farmland S.E. of Malltraeth Marsh	L	L	M	U	M	M	L	M		Moderate
	YNSMNLH067	Woodland S.W. of Llanfair PG	U	M	U	U	M	H	M	M		Moderate
	YNSMNLH095	Farmland N.W. of Menai Bridge	L	L	M	U	M	U	M	M		Moderate
	YNSMNLH133	Traeth Abermenai to Menai Bridge	O	O	L	U	H	H	O	H		Outstanding
Visual & Sensory	YNSMNVSO26	Menai Straits slopes - south	H	H	H	H						High
	YNSMNVSO43	Menai Straits - mid section	H	H	O	O						Outstanding
	YNSMNVSO44	Menai Straits south	H	H	H	H						High
	YNSMNVSO45	Traeth Abermenai	H	H	H	H						High
Historic Landscapes	YNSMNLH002	Fieldscape around Quirt	H	H	H	H	H					High
	YNSMNLH004	South Anglesey parkland	O	O	H	O	M					Outstanding
	YNSMNLH006	A5 corridor and associated villages	O	O	H	O	H					Outstanding
	YNSMNLH065	Brynsiencyn	H	O	M	H	M					High
Cultural Landscapes	YNSMNLH008	A55 road	H	M	L	L	M	L	L	H	M	High
	YNSMNLH031	Sustrans Cycle Route	O	M	H	L	M	L	L	M	O	High
	YNSMNLH033	Central Anglesey	U	H	H	U	H	H	H	H	H	High
	YNSMNLH034	South west coast	U	H	O	U	H	O	U	H	H	Outstanding
	YNSMNLH035	Plas Newydd, Plas Llanidan	H	O	O	U	O	O	M	M	H	Outstanding

LANDSCAPE CHARACTER AREA 14: NEWBOROUGH



© Crown Copyright - Isle of Anglesey County Council - 100023412



Newborough sand dunes



Abermenai Point, Newborough Forest and Llanddwyn Island

Description

The Newborough LCA is based around a marked concentration of important landscape features identified within all of the LANDMAP aspect layers. The area is formed by an extensive dune system and associated streams, inlets and inter-tidal zone. This forms a distinct landscape unit on the south western promontory of Anglesey.

The majority of the area has been planted earlier this century with conifers and as a consequence it forms a distinct visual feature, especially when seen from the mainland. When approaching Anglesey from the A487, the initial glimpses of the trees announce an impending arrival at Anglesey. It also forms an important refuge for the native Red Squirrel.

Inland, the ground rises slightly, and the settlement of Newborough can be found. This forms an important historic and cultural influence over the landscape. The settlement dates from the medieval period and has resulted from the dispersal of the people of Llanfaes further along the Strait when Beaumaris was developed. Cross reference to Seascapes Regional Units 11 and 12.

Key Issues

Coastal Landscapes

Ensure development and management proposals take into account:-

- Any direct or indirect impacts upon the range of coastal habitats.
- Visual, direct and cumulative impacts upon essential characteristics of the LCA. In this instance the area of inter-tidal habitats and landscape.
- Have regard to the AONB Management Plan.

Habitat Management

The core of the LCA is formed by the dune system of Newborough Warren and associated plantations. It is important that any development or management proposals should seek to:-

- Ensure key habitats - dune system, conifer plantations and red squirrel habitats are properly managed, in particular taking into account impacts of visitors.

Transportation Corridors

For travellers on the A487, the LCA provides an initial glimpse of the island from the mainland. Its distinctive character establishes a particular quality. Given this it will be important that direct and cumulative effects of any proposals are fully considered, including those on the mainland. This will require close co-operation with Gwynedd Council.

Landmap Aspect Area Matrix - LCA 14 Newborough												
Aspect Area	UID	AreaName	1	2	3	4	5	6	7	8	9	Overall Evaluation
Geological Landscapes	YNSMNGLO34	Maltraeth Marsh	M	H	H	M						High
	YNSMNGLO44	Afon Braint	L	L	L	L						Moderate
	YNSMNGLO48	Brynsiencyn	L	L	L	L						Moderate
	YNSMNGLO49	Penrhyn (Abermenai)	L	L	L	L						Moderate
	YNSMNGLO50	Newborough Warren	O	H	H	H						Outstanding
	YNSMNGLO51	Newborough Forest	L	M	L	M						Low
	YNSMNGLO52	Cerrig Mawr	H	M	M	M						High
	YNSMNGLO53	Cefni Saltmarsh	H	M	H	H						Outstanding
	YNSMNGLO54	Llanddwyn Island	O	O	O	O						Outstanding
	YNSMNGLO106	Menai Straits (SW)	H	M	M	M						High
Landscape Habitats	YNSMNGLO107	Traeth Llanddwyn	H	H	H	O						Outstanding
	YNSMNLH005	Newborough Sand Dunes	O	O	L	U	U	H	O	O		Outstanding
	YNSMNLH044	Newborough Forest	H	O	M	U	U	H	H	O		Outstanding
	YNSMNLH060	Farmland S.E. of Malltraeth Marsh	L	L	M	U	M	M	L	M		Moderate
	YNSMNLH077	Braint Saltmarsh	O	H	L	U	H	M	O	H		Outstanding
	YNSMNLH094	Llanddwyn Bay	O	H	L	U	H	M	O	H		Outstanding
	YNSMNLH133	Traeth Abermenai to Menai Bridge	O	O	L	U	H	H	O	H		Outstanding
Visual & Sensory	YNSMNLH137	Llanddwyn Island	O	O	L	U	H	M	O	H		Outstanding
	YNSMNVSO19	Newborough Forest	M	H	M	H						Moderate
	YNSMNVSO21	Abermenai lowlands	M	H	M	M						Moderate
	YNSMNVSO45	Traeth Abermenai	H	H	H	H						High
	YNSMNVSO46	Newborough Warren	H	O	H	H						High
	YNSMNVSO47	Llanddwyn Bay/Malltraeth Bay	H	H	H	H						High
Historic Landscapes	YNSMNVSO48	Llanddwyn Island	H	O	O	H						Outstanding
	YNSMNLH001	Newborough Forest	M	H	H	H	H					High
	YNSMNLH002	Fieldscape around Quirt	H	H	H	H	H					High
	YNSMNLH003	Fieldscape north of Newborough	H	H	H	O	H					High
	YNSMNLH018	Malltraeth Marsh	O	H	M	O	H					Outstanding
	YNSMNLH062	Newborough Warren	H	M	H	H	U					High
	YNSMNLH063	Dwyran	H	H	M	H	M					High
Cultural Landscapes	YNSMNLH012	Transport corridor area	H	M	H	U	H	H	H	M	M	High
	YNSMNLH013	Newborough forest, Llanddwyn	U	H	H	U	O	H	U	O	M	Outstanding
	YNSMNLH034	South west coast	U	H	O	U	H	O	U	H	H	Outstanding

LANDSCAPE CHARACTER AREA 15: AFON CEFNI



Description

The Afon Cefni forms a distinct landscape unit on the island. It is a broad, flat, open valley, the majority of which is on or below the 10 metres AOD contour. Originally an area of inter-tidal marsh, subject to inundation by the sea, its current distinctive character is a result of the control of flooding and development of an artificial network of drains and ditches. For the majority of the area the Afon Cefni runs in a canalised channel. At its northern end it is crossed by the A5 and new A55 trunk road corridor on a raised embankment, which isolates the northern section of the LCA. This northern area exhibits a marshier, low lying character and has a sense of isolation setting it apart from the remainder of the LCA.

Its formation is a result of fault systems within the hard geology and a thin area of coal measures underlies the surface. This was the basis for the small scale Anglesey coalfield which was active from medieval times to the very early 20th century. The lower end of the LCA is crossed by the Chester-Holyhead railway and on its coastal margins is the broad inter-tidal zone of Malltraeth Sands. The edges of the LCA are formed by the higher ground to the north and south, and is typically improved agricultural grassland interspersed with small areas of woodland and areas of formal parkland. Cross reference to Seascapes Regional Units 12.

Key Issues**Coastal Landscapes**

- Have regard to the AONB Management Plan.

Habitat Management

It is important that new development and management proposals will:-

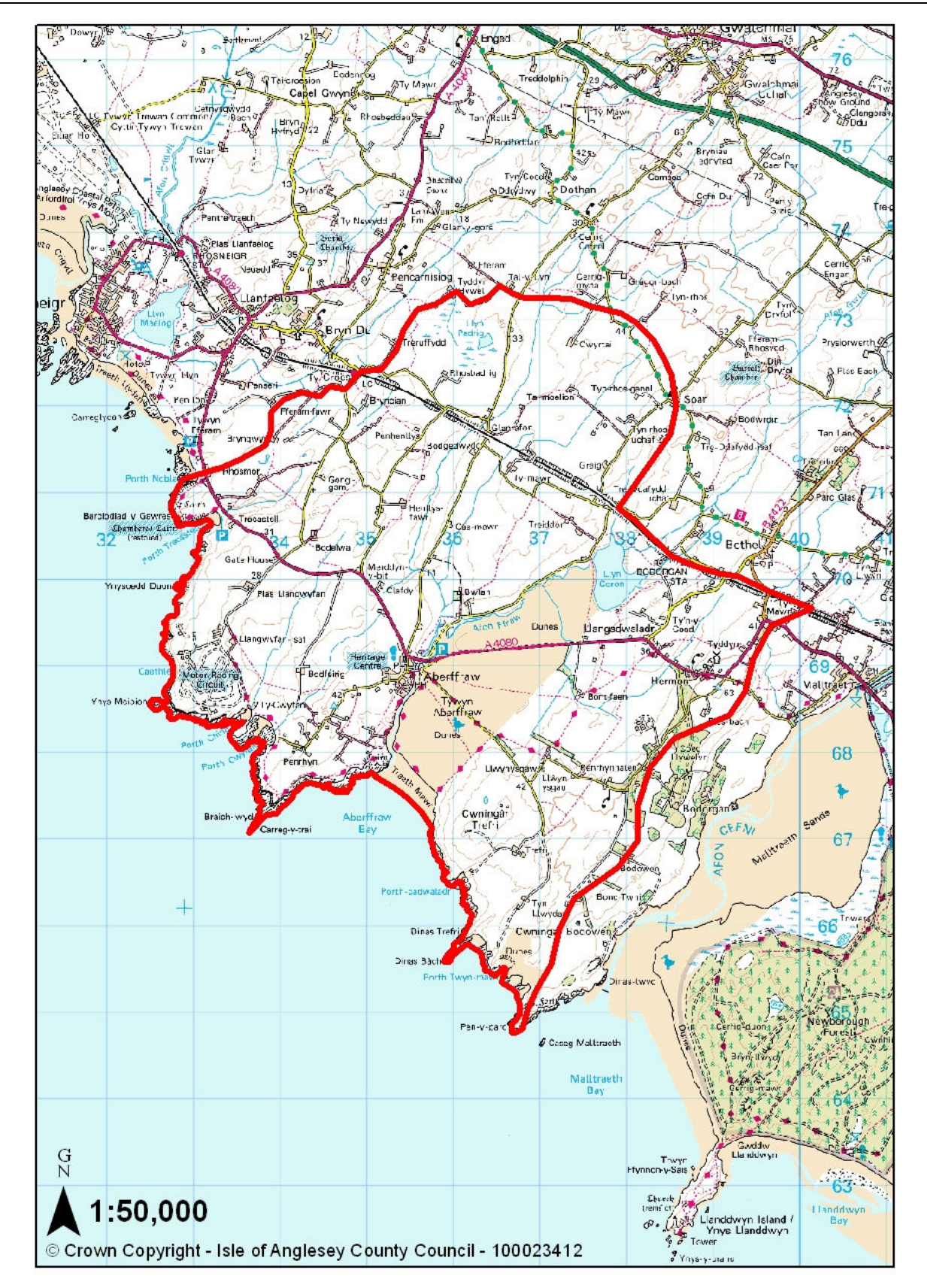
- Ensure key habitats – drainage and ditch systems, woodlands, inter-tidal zone of Malltraeth Sands – are properly managed.
- Develop and enhance wider habitat matrix to link to Local Biodiversity Action Plan.

Transportation Corridors

The LCA is crossed by both the railway line to Holyhead and the A5/A55 corridor. These allow for extensive views across a distinctive landscape unit. Thus any developments or management proposals should reflect this and maintain extensive views out, which contribute to a sense of place within the island.

Landmap Aspect Area Matrix - LCA 15 Afon Cefni												
Aspect Area	UID	AreaName	1	2	3	4	5	6	7	8	9	Overall Evaluation
Geological Landscapes	YNSMNGLO30	Benllech	H	H	H	M						High
	YNSMNGLO33	Afon Ceint	L	L	L	L						Moderate
	YNSMNGLO34	Maltraeth Marsh	M	H	H	M						High
	YNSMNGLO50	Newborough Warren	O	H	H	H						Outstanding
	YNSMNGLO53	Cefni Saltmarsh	H	M	H	H						Outstanding
	YNSMNGLO55	Maltraeth	L	L	L	L						Moderate
	YNSMNGLO56	Pentre Berw	L	L	L	L						Moderate
	YNSMNGLO57	Hirde-Faig	L	L	L	L						Moderate
	YNSMNGLO62	Cerrigceinwen	H	M	M	M						High
	YNSMNGLO64	Cwninger Tyn Liwydan	L	L	L	L						Moderate
	YNSMNGLO109	Maltraeth Sands	H	O	H	H						Outstanding
Landscape Habitats	YNSMNGLO110	Aberffraw coast	H	H	M	M						High
	YNSMNLH007	Cefni Saltmarsh	O	H	L	U	H	M	O	H		Outstanding
	YNSMNLH013	Maltraeth Sands	O	H	L	U	H	M	O	H		Outstanding
	YNSMNLH018	Shingle at Traeth Penrhos	H	H	L	U	M	H	H	M		High
	YNSMNLH027	Farmland - central Anglesey	L	M	M	U	M	U	L	M		Moderate
	YNSMNLH048	Coedydd Ystad Bodorgan	U	M	U	U	M	M	M	M		Moderate
	YNSMNLH049	Cwinger Tyn Lwydan, Bodowen and Trefri	H	O	M	U	M	H	H	H		High
	YNSMNLH059	Maltraeth Marsh (imp. grass)	H	H	M	U	H	H	H	H		High
	YNSMNLH060	Farmland S.E. of Maltraeth Marsh	L	L	M	U	M	M	L	M		Moderate
	YNSMNLH079	Maltraeth (RSPB)	H	H	O	H	M	H	O	H		Outstanding
	YNSMNLH095	Farmland N.W. of Menai Bridge	L	L	M	U	M	U	M	M		Moderate
	YNSMNLH098	Tywyn Aberffraw to Maltraeth Sands	L	L	M	U	L	U	L	L		Low
	YNSMNLH107	Farmland N.W. of Maltraeth Marsh	L	M	M	U	M	M	M	M		Moderate
Visual & Sensory	YNSMNLH110	Cors Tregarnedd Fawr	M	M	M	U	H	L	M	M		Moderate
	YNSMNLH131	Maltraeth Marsh (Semi-imp. grass)	H	H	M	U	H	H	H	H		High
	YNSMNVSO13	Central/south-west craggy belt	M	H	M	M						Moderate
	YNSMNVSO22	Pentraeth valleys	M	H	M	L						Moderate
	YNSMNVSO27	Maltraeth Marsh south slopes	M	H	M	M						Moderate
	YNSMNVSO28	Maltraeth Marsh	L	H	H	H						Moderate
	YNSMNVSO47	Llanddwynd Bay/Maltraeth Bay	H	H	H	H						High
	YNSMNVSO49	Cefni saltmarsh	M	H	H	H						High
	YNSMNVSO50	Maltraeth Sands	H	H	H	H						High
	YNSMNVSO59	Llangefni	M	M	M	M						Moderate
Historic Landscapes	YNSMNVSO91	A55 corridor	L	L	M	L						Low
	YNSMNLH001	Newborough Forest	M	H	H	H	H					High
	YNSMNLH006	A5 corridor and associated villages	O	O	H	O	H					Outstanding
	YNSMNLH015	Llangefni	H	M	M	H	H					High
	YNSMNLH016	Fieldscape, central eastern Mon	O	O	M	O	H					Outstanding
	YNSMNLH018	Maltraeth Marsh	O	H	M	O	H					Outstanding
	YNSMNLH022	Bodorgan Estate	O	O	H	O	M					High
	YNSMNLH076	Maltraeth Sands	L	L	M	L	L					Low
	YNSMNLH079	Inland Southern Anglesey	O	O	H	O	H					Outstanding
Cultural Landscapes	YNSMNLH080	Lledwigan	H	H	H	H	H					High
	YNSMNCLO06	A5 Road	O	O	O	O	O	O	L	M	M	Outstanding
	YNSMNCLO08	A55 road	H	M	L	L	M	L	L	H	M	High
	YNSMNCLO09	Railway - Chester to Holyhead	H	O	O	O	O	M	H	H	O	Outstanding
	YNSMNCLO12	Transport corridor area	H	M	H	U	H	H	H	M	M	High
	YNSMNCLO13	Newborough forest, Llanddwynd	U	H	H	U	O	H	U	O	M	Outstanding
	YNSMNCLO15	Llangefni - Oriel Ynys Mon	M	M	L	M	M	M	H	M	H	High
	YNSMNCLO31	Sustrans Cycle Route	O	M	H	L	M	L	L	M	O	High
	YNSMNCLO33	Central Anglesey	U	H	H	U	H	H	H	H	H	High
	YNSMNCLO34	South west coast	U	H	O	U	H	O	U	H	H	Outstanding

LANDSCAPE CHARACTER AREA 16: ABERFFRAW





Tywyn Aberffraw dunes crossed by the A4080



Aberffraw



Windmill at Hermon



Porth Trecastell



Landscape from Llangadwaladr

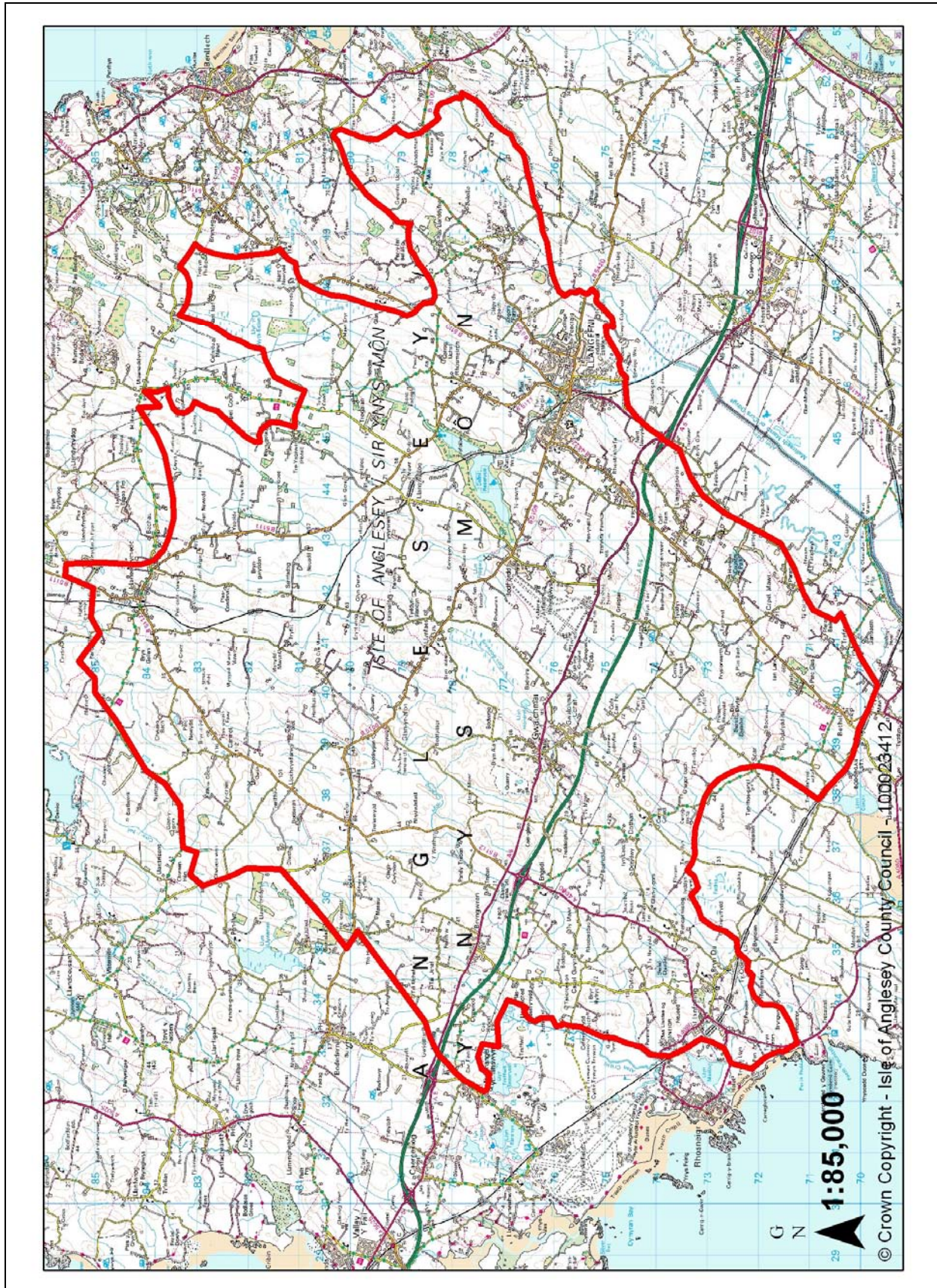


Llyn Coron

Description
<p>Aberffraw and its environs represent an important historic and cultural landscape unit. It exhibits a medieval landscape pattern that can still be traced today, based upon a network of seven hamlets and the township of Aberffraw. It was the site or 'priflys' of Llywelyn the Last, and whilst there are no apparent remains of the Lllys, the village is still closely associated with these elements. Part of the settlement is designated as a conservation area.</p> <p>The majority of the area is formed by an extensive dune system and associated habitats, with rough grazing. Further inland, the landscape is one associated with an improved agricultural system with hedgerows and hedgerow trees. The coastal area itself and the associated dunes are of particular nature conservation value. The inter-tidal zone is part of a large area extending along the whole of the south western coast of the island. Cross reference to Seascapes Regional Units 11 and 12.</p>
Key Issues
<p>Historic Landscapes</p> <p>The LCA contains important historic and cultural landscape elements, reflecting a distinct medieval pattern. It was the "priflys" or main court of Llywelyn the Last. Accordingly any development or management proposals should respect this important heritage in terms of:-</p> <ul style="list-style-type: none"> • Respecting the patterns and forms of the historic landscape. • Ensure any direct or indirect impacts upon both upstanding features and buried remains (known and unknown) are taken into account. • Having regard to the Aberffraw Conservation Area SPG. <p>Coastal Landscapes</p> <p>Development and management proposals should take into account:-</p> <ul style="list-style-type: none"> • Visual, direct and cumulative impacts upon the essential qualities of the LCA. • Any direct or indirect impacts upon the coastal habitats, in particular the dune systems found with the LCA. • Given its interrelationship with the AONB any proposals must consider impact upon perceptions of the character and quality of the landscape. • Have regard to the AONB Management Plan.

Landmap Aspect Area Matrix - LCA 16 Aberffraw												
Aspect Area	UID	AreaName	1	2	3	4	5	6	7	8	9	Overall Evaluation
Geological Landscapes	YNSMNGLO20	Llanerchymedd	H	H	H	H						High
	YNSMNGLO61	Soar	M	L	M	L						Moderate
	YNSMNGLO62	Cerrigceinwen	H	M	M	M						High
	YNSMNGLO64	Cwninger Tyn Liwydan	L	L	L	L						Moderate
	YNSMNGLO65	Tywyn Aberffraw	O	H	H	H						Outstanding
	YNSMNGLI10	Aberffraw coast	H	H	M	M						High
Landscape Habitats	YNSMNLH004	Llyn Padrig and surrounds	H	H	U	U	H	L	H	M		High
	YNSMNLH048	Coedydd Ystad Bodorgan	U	M	U	U	M	M	M	M		Moderate
	YNSMNLH049	Cwinger Tyn Lwydan, Bodowen and Trefri	H	O	M	U	M	H	H	H		High
	YNSMNLH056	Coastal heath & grass W. of Aberffraw	H	H	L	U	H	M	H	H		High
	YNSMNLH057	Coast - Traeth Lydan - Aberffraw Sands	H	H	L	U	H	H	M	M		Moderate
	YNSMNLH058	Coast - Malltraeth - Traeth Mawr	H	M	L	U	O	H	H	U		High
	YNSMNLH070	Llyn Caron	H	H	U	U	H	M	O	H		Outstanding
	YNSMNLH084	Farmland between old A5 and Railway line	L	L	M	U	L	U	L	M		Low
	YNSMNLH085	Farmland N.E. of Bryn Du	L	L	M	U	L	U	L	M		Low
	YNSMNLH097	Aberffraw Dunes to Rhosneigr	L	L	M	U	L	U	L	M		Low
	YNSMNLH098	Tywyn Aberffraw to Malltraeth Sands	L	L	M	U	L	U	L	L		Low
	YNSMNLH099	Aberffraw Dunes	O	O	L	U	U	H	O	O		Outstanding
	YNSMNLH107	Farmland N.W. of Malltraeth Marsh	L	M	M	U	M	M	M	M		Moderate
Visual & Sensory	YNSMNVSO12	Central smooth belt	M	H	L	L						Moderate
	YNSMNVSO13	Central/south-west craggy belt	M	H	M	M						Moderate
	YNSMNVSO51	South west coast	H	H	M	M						High
	YNSMNVSO52	Tywyn Aberffraw	M	H	H	H						High
	YNSMNVSO82	Aberffraw	H	M	H	H						High
	YNSMNVSO92	Ty Croes racing circuit	L	L	H	H						Low
Historic Landscapes	YNSMNLH022	Bodorgan Estate	O	O	H	O	M					High
	YNSMNLH023	Aberffraw area	O	H	H	O	O					Outstanding
	YNSMNLH079	Inland Southern Anglesey	O	O	H	O	H					Outstanding
Cultural Landscapes	YNSMNCLO09	Railway - Chester to Holyhead	H	O	O	O	O	M	H	H	O	Outstanding
	YNSMNCLO12	Transport corridor area	H	M	H	U	H	H	H	M	M	High
	YNSMNCLO24	Aberffraw	O	H	O	H	O	H	L	M	H	Outstanding
	YNSMNCLO31	Sustrans Cycle Route	O	M	H	L	M	L	L	M	O	High
	YNSMNCLO34	South west coast	U	H	O	U	H	O	U	H	H	Outstanding

LANDSCAPE CHARACTER AREA 17: WEST CENTRAL ANGLESEY



Description
<p>An expansive LCA which includes a large area of the rural heartland of Anglesey, and including the settlements of Gwalchmai and Llangefni. The LCA also includes a small section of coastal landscape at Rhosneigr including Traeth Llydan, with its associated dune system and impounded water body (Llyn Maelog).</p> <p>The topography is generally undulating which reflects its underlying geology, particularly the Coedana Granites. This results in a number of rocky outcrops that typify the landscape of this part of the island. These, together with small areas of semi-natural habitats – hedges, trees, mires – are scattered throughout the area within a matrix of improved agricultural grassland.</p> <p>The topography of the LCA forms a gently undulating pattern which largely reflects the influences of the underlying geology, especially the Coedana granite. This results in the very typical small rocky outcrops that are scattered around this part of the island. These are mirrored by the complex of small areas of semi-natural habitat – mires, trees, hedgerows and hedgebanks which are found throughout the area within a larger matrix of improved agricultural grassland. These form an important landscape resource and contribute markedly to the character of the area, breaking up areas of uniformity within the wider landscape.</p> <p>The A5 and A55 roads pass through the area, whilst the main railway passes along its southern edge. The main settlements within the LCA are Llangefni and Gwalchmai and nearby adjacent to the A5 are the Anglesey Showground and Mona Airfield.</p>
Key Issues
<p>Habitat Management</p> <p>An extensive LCA, covering the rural heartland of Anglesey. Any proposals should take into account:-</p> <ul style="list-style-type: none"> • The management of the range of semi-natural habitats - mires, trees and hedgerows - found scattered throughout the area. • The management of wider habitats to increase their value and reflect Local Biodiversity Action Plan objectives. • That direct and indirect effect upon habitats is properly addressed. <p>Transportation Corridors</p> <p>The main railway line and A5/A55 corridors pass through the LCA. It is important any new development or management proposals ensure that:-</p> <ul style="list-style-type: none"> • Visual impacts from and to these principal transport corridors are properly considered. • Mitigation measures reflect the wider landscape structure and sites are not considered in isolation. <p>Settlement Edge</p> <p>Development around settlement edges should:-</p> <ul style="list-style-type: none"> • Be of a form and character appropriate to each settlement. • Be considered in terms of impacts upon the wider landscape, rather than the site above. • Seek to integrate using landform, vegetation etc to minimise impacts. • Ensure that standard solutions are not used in order that the inherent characteristics of the area are contained within the design. • Have regard to Llangefni Conservation Area SPG.

Landmap Aspect Area Matrix - LCA 17 West Central Anglesey													
Aspect Area	UID	AreaName	1	2	3	4	5	6	7	8	9	Overall Evaluation	
Geological Landscapes	YNSMNGLO18	Afon Alaw	L	L	L	L						Moderate	
	YNSMNGLO19	Bodedern	M	M	M	M						Moderate	
	YNSMNGLO20	Llanerchymedd	H	H	H	H						High	
	YNSMNGLO21	Gwndy	L	L	L	L						Moderate	
	YNSMNGLO22	Eirianallt	L	L	L	L						Moderate	
	YNSMNGLO23	Caer Glaw	O	H	H	M						Outstanding	
	YNSMNGLO24	Cerrig y Cathod	L	L	L	L						Moderate	
	YNSMNGLO26	Cae'r-mynydd	L	L	M	L						Moderate	
	YNSMNGLO29	Cors Erddeiniog	L	L	L	L						Moderate	
	YNSMNGLO30	Benllech	H	H	H	M						High	
	YNSMNGLO32	Cors Bodeilto	L	L	L	L						Moderate	
	YNSMNGLO33	Afon Ceint	L	L	L	L						Moderate	
	YNSMNGLO34	Maltraeth Marsh	M	H	H	M						High	
	YNSMNGLO35	Rhos-y-Gad	L	L	L	L						Moderate	
	YNSMNGLO36	Llanddyfnam	L	M	M	L						Moderate	
	YNSMNGLO55	Maltraeth	L	L	L	L						Moderate	
	YNSMNGLO57	Hirde-Faig	L	L	L	L						Moderate	
	YNSMNGLO58	Afon Cefni	L	L	L	L						Moderate	
	YNSMNGLO59	Cors Bodwrog	L	L	L	L						Moderate	
	YNSMNGLO60	Cerrigdrudion	L	L	L	L						Moderate	
	YNSMNGLO61	Soar	M	L	M	L						Moderate	
	YNSMNGLO62	Cerrigceinwen	H	M	M	M						High	
	YNSMNGLO63	Rhosmeirch	L	L	L	L						Moderate	
	YNSMNGLO66	Tywyn Trwan Common	L	L	L	L						Low	
	YNSMNGLO68	Lyn Maelog - Tywyn Fferam	L	M	L	L						Moderate	
	YNSMNGLO69	Bodrowydd	M	L	M	M						Moderate	
	YNSMNGLO70	Afon Crigyll	L	L	L	L						Moderate	
Landscape Habitats	YNSMNLH001	Tyddyn Gwyn	M	H	U	U	M	L	M	U		Moderate	
	YNSMNLH006	Farmland - West Anglesey	L	L	M	U	M	U	L	M		Moderate	
	YNSMNLH014	Cors Bodwrog	H	H	L	U	H	M	H	H		High	
	YNSMNLH020	Cors Erddreiniog	O	H	L	U	H	M	O	O		Outstanding	
	YNSMNLH022	Cors Erddreiniog (south section)	O	H	L	U	H	M	O	U		Unassessed	
	YNSMNLH025	Tywyn Fferam & Llyn	H	H	U	U	U	H	H	H		High	
	YNSMNLH027	Farmland - central Anglesey	L	M	M	U	M	U	L	M		Moderate	
	YNSMNLH073	Cors Bodeilio	O	H	L	U	H	M	O	H		Outstanding	
	YNSMNLH084	Farmland between old A5 and Railway line	L	L	M	U	L	U	L	M		Low	
	YNSMNLH085	Farmland N.E. of Bryn Du	L	L	M	U	L	U	L	M		Low	
	YNSMNLH089	Llangefni	L	L	M	U	M	L	L	M		Low	
	YNSMNLH092	Llanerchymedd	L	L	M	U	U	L	L	L		Low	
	YNSMNLH093	Farmland E. of Llyn Alaw	L	L	M	U	U	U	L	M		Moderate	
	YNSMNLH095	Farmland N.W. of Menai Bridge	L	L	M	U	M	U	M	M		Moderate	
	YNSMNLH097	Aberffraw Dunes to Rhosneigr	L	L	M	U	L	U	L	M		Low	
	YNSMNLH107	Farmland N.W. of Maltraeth Marsh	L	M	M	U	M	M	M	M		Moderate	
	YNSMNLH108	Cefni Plantation	U	L	M	U	M	M	M	M		Moderate	
	YNSMNLH109	Cefni Reservoir	H	H	U	U	H	M	M	M		Moderate	
	YNSMNLH112	Cors Hendre Fawr	M	M	M	U	M	L	M	U		Moderate	
	YNSMNLH115	Farmland S.W. of Benllech	M	M	M	U	M	M	M	M		Moderate	
	YNSMNLH130	The Dingle	U	M	H	U	M	H	H	H		High	
	YNSMNLH139	Gwenfro and Rhos-y-gad	H	H	L	U	H	M	O	H		Outstanding	

Visual & Sensory	YNSMNV008	North-west drumlins	M	H	M	L							Moderate
	YNSMNV012	Central smooth belt	M	H	L	L							Moderate
	YNSMNV013	Central/south-west craggy belt	M	H	M	M							Moderate
	YNSMNV014	Benllech hinterland	H	M	M	M							Moderate
	YNSMNV020	Caergeiliog craggy lowlands	M	M	M	L							Moderate
	YNSMNV022	Pentraeth valleys	M	H	M	L							Moderate
	YNSMNV023	Llangefni Dingle	H	H	O	H							High
	YNSMNV029	Llanfihangel lakes and dunes	M	M	H	H							Moderate
	YNSMNV057	Cefni Reservoir	M	M	H	M							Moderate
	YNSMNV059	Llangefni	M	M	M	M							Moderate
	YNSMNV070	Llanerchymedd	M	L	L	M							Moderate
	YNSMNV072	Gwalchmai	M	M	M	M							Moderate
	YNSMNV088	Caer Glaw Quarry	L	M	M	L							Low
	YNSMNV089	Mona airfield/showground	L	L	H	M							Low
Historic Landscapes	YNSMNV091	A55 corridor	L	L	M	L							Low
	YNSMNL006	A5 corridor and associated villages	O	O	H	O	H						Outstanding
	YNSMNL014	Talwrn	H	H	H	H	H						High
	YNSMNL015	Llangefni	H	M	M	H	H						High
	YNSMNL016	Fieldscape, central eastern Mon	O	O	M	O	H						Outstanding
	YNSMNL017	Rhostrehwfa	H	H	M	H	M						High
	YNSMNL019	Mona Airfield	U	M	H	H	M						High
	YNSMNL020	Cors Bodwrog	L	M	M	M	H						Moderate
	YNSMNL023	Aberffraw area	O	H	H	O	O						Outstanding
	YNSMNL024	Rhosneigr/Bryn Du area	M	M	M	M	M						Moderate
	YNSMNL034	Presaddfed area	H	O	H	H	U						High
	YNSMNL036	Llanerchymedd	H	H	M	H	H						High
	YNSMNL037	Fieldscape, Tre-Ysgawen	H	H	H	H	M						High
	YNSMNL041	Cors Erddreiniog	M	L	M	U	H						Moderate
Cultural Landscapes	YNSMNL042	Parciau/Lligwy	O	O	H	O	H						Outstanding
	YNSMNL043	Fieldscape, eastern Mon	H	H	M	H	U						High
	YNSMNL079	Inland Southern Anglesey	O	O	H	O	H						Outstanding
	YNSMNL080	Lledwigan	H	H	H	H	H						High
	YNSMNL006	A5 Road	O	O	O	O	O	L	M	M			Outstanding
	YNSMNL007	A5 Road Villages	H	M	M	U	H	H	M	M	M		Moderate
	YNSMNL008	A55 road	H	M	L	L	M	L	L	H	M		High
	YNSMNL009	Railway - Chester to Holyhead	H	O	O	O	O	M	H	H	O		Outstanding
	YNSMNL011	Rhosneigr	U	M	M	U	H	M	U	M	H		High
	YNSMNL012	Transport corridor area	H	M	H	U	H	H	H	M	M		High
	YNSMNL015	Llangefni - Oriol Ynys Mon	M	M	L	M	M	M	H	M	H		High
	YNSMNL016	Llanerchymedd	U	M	M	U	M	M	U	M	M		Moderate
	YNSMNL031	Sustrans Cycle Route	O	M	H	L	M	L	L	M	O		High
	YNSMNL033	Central Anglesey	U	H	H	U	H	H	H	H	H		High
	YNSMNL034	South west coast	U	H	O	U	H	O	U	H	H		Outstanding

LANDSCAPE CHARACTER AREA 18: VALLEY AIRFIELD ENVIRONS





Traeth Crigyll

Description

A rather disparate LCA which recognises the social, cultural and economic effects of the RAF Station at Valley. The LCA includes the airfield and the adjacent 20th century holiday settlement of Rhosneigr, and its associated coastal landscapes of Traeth Cymyrau and Traeth Crigyll, as well as the series of wetlands and reserves (Llyn Penrhyn, Llyn Traffwll) inland and on either side of the settlement of Llanfihangel yn Nhowyn.

The airfield operations which include both military and civil flights has a major impact upon the statutory qualities of the area, in fact on the island and surrounding area as a whole. The nature and scale of the buildings, associated hard standings and runways visually dominate the LCA. The LCA is also traversed by the main Holyhead railway line which runs alongside the airfield. Cross reference to Seascapes Regional Unit 10.

Key Issues**Coastal Landscapes**

The coastline element of the LCA contains a number of habitat types – dunes, water bodies, wetlands. It is important that any development or management proposals take into account:-

- Any direct or indirect consequential effects upon the habitats, especially the tidal zone.
- Ensure that visual qualities - open, exposure - are properly addressed by any management proposals.
- Have regard to the AONB Management Plan.

Settlement Edge

The LCA includes a live military airfield and includes the settlement of Llanfihangel yn Nhowyn and Rhosneigr. Given this it is important to work closely with the authorities to ensure that both single and cumulative effects of operational developments are fully considered given its juxtaposition to the AONB and wider landscape. It will be important not to impose standardised solutions but reflect the distinctive character of the LCA.

Landmap Aspect Area Matrix - LCA 18 Valley Airfield Environs												
Aspect Area	UID	AreaName	1	2	3	4	5	6	7	8	9	Overall Evaluation
Geological Landscapes	YNSMNGLO19	Bodedern	M	M	M	M						Moderate
	YNSMNGLO20	Llanerchymedd	H	H	H	H						High
	YNSMNGLO66	Tywyn Trwan Common	L	L	L	L						Low
	YNSMNGLO67	Rhosneigr	L	L	L	L						Low
	YNSMNGLO68	Llyn Maelog - Tywyn Fferam	L	M	L	L						Moderate
	YNSMNGLO71	Llyn Penrhyn-Llyn Trafwill	M	L	M	L						Moderate
	YNSMNGLO72	Llanfairyrneubwll	L	L	L	L						Moderate
	YNSMNGLO110	Aberffraw coast	H	H	M	M						High
	YNSMNGLO111	Rhosneigr coast	H	H	M	M						High
Landscape Habitats	YNSMNLH012	Cors Plas	M	M	M	U	M	U	M	U		Moderate
	YNSMNLH015	Llyn Traffwll Reservoir	H	H	U	U	H	M	H	M		High
	YNSMNLH016	Valley Lakes	H	H	U	U	H	M	O	H		Outstanding
	YNSMNLH024	RAF Valley Airfields	H	H	M	U	U	H	H	M		Moderate
	YNSMNLH025	Tywyn Fferam & Llyn	H	H	U	U	U	H	H	H		High
	YNSMNLH026	Llyn Maelog	H	H	U	U	H	L	H	M		High
	YNSMNLH055	Cymaran Bay	H	O	L	U	O	H	H	O		High
	YNSMNLH068	Rhosneigr	L	L	M	U	U	L	L	L		Low
	YNSMNLH069	Afon Crigyll Saltmarsh	H	H	L	U	H	M	H	M		High
	YNSMNLH084	Farmland between old A5 and Railway line	L	L	M	U	L	U	L	M		Low
	YNSMNLH097	Aberffraw Dunes to Rhosneigr	L	L	M	U	L	U	L	M		Low
	YNSMNLH103	Farmalnd between Inland Sea and A5	L	L	M	U	M	M	L	M		Moderate
Visual & Sensory	YNSMNVSO12	Central smooth belt	M	H	L	L						Moderate
	YNSMNVSO20	Caergeiliog craggy lowlands	M	M	M	L						Moderate
	YNSMNVSO29	Llanfihangel lakes and dunes	M	M	H	H						Moderate
	YNSMNVSO53	Southwest coast - Rhosneigr	H	M	H	M						High
	YNSMNVSO66	Llanfihangel yn Nhowyn	L	L	M	L						Low
	YNSMNVSO67	Rhosneigr	M	M	H	M						Moderate
	YNSMNVSO90	RAF Valley airfield	L	L	H	M						Low
Historic Landscapes	YNSMNLH023	Aberffraw area	O	H	H	O	O					Outstanding
	YNSMNLH024	Rhosneigr/Bryn Du area	M	M	M	M	M					Moderate
	YNSMNLH026	RAF Valley	H	H	H	O	O					Outstanding
	YNSMNLH079	Inland Southern Anglesey	O	O	H	O	H					Outstanding
Cultural Landscapes	YNSMNLH009	Railway - Chester to Holyhead	H	O	O	O	O	M	H	H	O	Outstanding
	YNSMNLH011	Rhosneigr	U	M	M	U	H	M	U	M	H	High
	YNSMNLH012	Transport corridor area	H	M	H	U	H	H	H	M	M	High
	YNSMNLH019	Northern Coast	H	H	H	U	H	H	H	M	M	Outstanding
	YNSMNLH029	Valley airport	H	M	M	M	M	M	M	L	H	High
	YNSMNLH031	Sustrans Cycle Route	O	M	H	L	M	L	L	M	O	High
	YNSMNLH034	South west coast	U	H	O	U	H	O	U	H	H	Outstanding